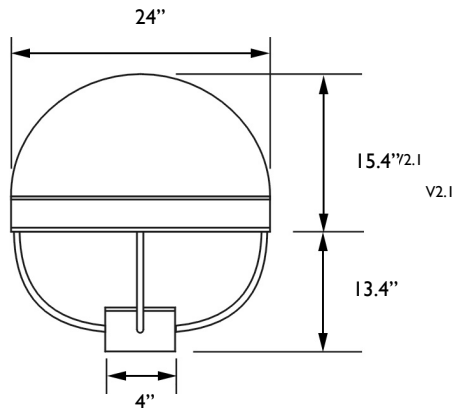


AREALIGHT.T
 All products feature Noribachi's exclusive Bespoke Engineered and Specifically Tailored (BEST) manufacturing methodology.

CATALOG #:	TYPE:
PROJECT:	
COMMENTS:	DATE:
PREPARED BY:	

PRODUCT



Product Information

The Arealight.T is a uniquely designed outdoor fixture that improves lighting quality and efficiency in large outdoor areas in a stylish way.

This LED lighting fixture features heavy duty die-cast aluminum housing and heat and impact resistant tempered glass.

Applications: Municipal Parks, Parking Lots, Recreational Areas and large outdoor lighting applications.

Performance Summary

Lumens Range: 4,431 lm –53,170 lm
 Lumens Per Watt (Typical): 141
 Light Engine: L70 Rated Lifetime of 100,000+ hours.
 CRI: Minimum 70 CRI. Custom CRI available upon request.
 CCT (Typical): 3000K, 4000K, 5700K
 Manufactured in the U.S. with parts from U.S. and imported.

Fixture Information

Housing: Black / Custom
 Lens: Tempered Glass
 Mounting: Pole Mount (Spider)
 Diffusion: None

Specifications

UL/cUL listed: Wet Locations
 Dome Height: 15.4"
 Mount Height: 13.4"
 Width: 24"
 Mount Width: 4"
 Weight: 31 lbs

Electrical System Characteristics / Data

Standard AC input: 120-277 VAC
 EMI filter: 47CFR, part 2, part 15
 Power factor: > 0.9
 Total harmonic distortion: < 20%
 Surge protection: IEC/EN 61000-4-5 EMC test standard

Electrical characteristics and performance data verified by Nationally Recognized Testing Labs (NRTL). For full reports and results, visit www.noribachi.com/reports.

Ordering Information Sample Catalog Number: HEX-252-B-WW-MT-ALT						
LIGHT ENGINE	DRIVE CURRENT	COLOR TEMPERATURE	VOLTAGE	FIXTURE CODE	OPTIONAL UPGRADES	OPTIONAL BEAM SPREAD AND TYPE DISTRIBUTION
HEX-021 HEX-042 HEX-063 HEX-084 HEX-105 HEX-126 HEX-168 HEX-210 HEX-252	B B B B B B B B	CW – COOL WHITE (5700K TYPICAL) NW – NEUTRAL WHITE (4000K TYPICAL) WW – WARM WHITE (3000K TYPICAL)	MT	ALT – AREALIGHT.T	HV1 – 480V UPTO 150W HV2 – 480V GREATER THAN 150W COL [RAL] – CUSTOM FIXTURE COLOR COAT – MARINE GRADE FIXTURE COATING EPOXY – EPOXY COATING SGR1 – 120V SURGE PROTECTOR SGR2 – 277V SURGE PROTECTOR SGR4 – 480V SURGE PROTECTOR 010V – 1-10V DIMMING FUNCTIONALITY STEP – STEP DIMMING FUNCTIONALITY	80D – OPTIONAL 80° BEAM SPREAD T1- OPTIONAL TYPE 1 DISTRIBUTION T2- OPTIONAL TYPE 2 DISTRIBUTION T3- OPTIONAL TYPE 3 DISTRIBUTION T4 – OPTIONAL TYPE 4 DISTRIBUTION TRS or TLS – OPTIONAL RIGHT OR LEFT SLANTED DISTRIBUTION

Warranty: Five-Year Limited Warranty. Optional 10-Year Manufacturer's Warranty Available. Full Warranty Terms Available At www.noribachi.com/products/warranty

WHEN APPROVED, THE SPECIFICATIONS OUTLINED IN THIS SPEC SHEET SHALL BECOME THE SPECIFICATION FOR THE MATERIAL TO BE DELIVERED BY NORIBACHI ON THE CITED PROJECT. AN AMENDED SPEC SHEET CAN BE PROVIDED BUT ONLY AFTER WRITTEN APPROVAL BY THE CUSTOMER IS RECEIVED. THIS DOCUMENT IS THE PROPERTY OF NORIBACHI AND CAN ONLY BE USED IN CONNECTION WITH MATERIALS FURNISHED BY NORIBACHI. ©2015



AREALIGHT.T
 All products feature Noribachi's exclusive Bespoke Engineered and Specifically Tailored (BEST) manufacturing methodology.

CATALOG #:	TYPE:
PROJECT:	
COMMENTS:	DATE:
PREPARED BY:	

ELECTRICAL

Construction
 Heavy duty die-cast aluminum housing with polyester powder paint finish. Includes heat and impact resistant tempered glass lens.

Optics
 High brightness, high efficiency LEDs. Color temperature options include Cool White (5700K typical), Neutral White (4000K typical) Warm White (3000K typical) with minimum 70 CRI. Custom RGBW colors available. 120° beam angle standard. Optional 80° spread available. Type I – 4 Light Distribution available. Optional Right (TRS) or Left Slanted (TLS) Distribution available.

Controls
 480V for up to 150W light engines (HV1) and 480V for greater than 150W light engines (HV2). 120V (SGR1), 277V (SGR2) and 480V (SGR4) Surge Protectors.

Mounting
 Pole Top (spider mount available).

Driver
 Available in B drive current (525 mA). Highly reliable. Suitable for dry, damp and wet locations. Compliant to worldwide safety regulations for lighting.

Testing Compliance
 UL 1598 Issued: 2008/09/17 Ed:3 Rev:2012/10/17 UL Standard for Safety Luminaires CSA C22.2#250.0 Issued: 2008/09/17 Ed:3 Luminaires; General Instruction No.1 2010/01/11, General Instruction No. 2 2012/10/17.

Electrical System
 Surge protection meets 10KV/5KA per ANSI/IEEE62.41. Driver meets maximum harmonic distortion (THD) of 20% and is ROHS compliant. Power Factor = > 0.9.

Ambient Temperature
 -40°C to +65°C (-40°F to + 149°F).

Manufacturing
 Manufactured in beautiful Harbor City, CA. ARRA Compliant. NAFTA Compliant. Test and burn-in of 100% of all luminaires before shipment. No less than 8-years experience in manufacturing LED-based products.

Electrical Load					
LIGHT ENGINE	DRIVE	DRIVE CURRENT (AMPS@120V)	DRIVE CURRENT (AMPS@277V)	DRIVE CURRENT (AMPS@480V)	SYSTEM POWER* (WATTS)
HEX-021	B	0.26	0.11	0.07	31.46
HEX-042	B	0.53	0.23	0.13	63.02
HEX-063	B	0.79	0.34	0.20	94.70
HEX-084	B	1.05	0.46	0.26	126.48
HEX-105	B	1.32	0.57	0.33	158.38
HEX-126	B	1.59	0.69	0.40	190.38
HEX-168	B	2.12	0.92	0.53	254.72
HEX-210	B	2.66	1.15	0.67	319.50
HEX-252	B	3.21	1.39	0.80	384.72

*Ideal Wattage

Operating Characteristics (Typical @5700K CCT)					
LIGHT ENGINE	DRIVE	LUMENS (TS)	INPUT POWER (WATTS)	LUMENS PER WATT	REPLACES
HEX-021	B	4,431	31.46	140.86	75-175W
HEX-042	B	8,862	63.02	140.62	125-300W
HEX-063	B	13,293	94.70	140.37	200-400W
HEX-084	B	17,723	126.48	140.13	300-525W
HEX-105	B	22,154	158.38	139.88	400-750W
HEX-126	B	26,585	190.38	139.64	550-800W
HEX-168	B	35,447	254.72	139.16	725-1200W
HEX-210	B	44,308	319.50	138.68	1000-1450W
HEX-252	B	53,170	384.72	138.20	1250-1700W

Note
 Specifications subject to change without notice. Actual performance may differ as a result of end-user environment application. Actual wattage may differ by +/- 8%.

WHEN APPROVED, THE SPECIFICATIONS OUTLINED IN THIS SPEC SHEET SHALL BECOME THE SPECIFICATION FOR THE MATERIAL TO BE DELIVERED BY NORIBACHI ON THE CITED PROJECT. AN AMENDED SPEC SHEET CAN BE PROVIDED BUT ONLY AFTER WRITTEN APPROVAL BY THE CUSTOMER IS RECEIVED. THIS DOCUMENT IS THE PROPERTY OF NORIBACHI AND CAN ONLY BE USED IN CONNECTION WITH MATERIALS FURNISHED BY NORIBACHI. ©2015



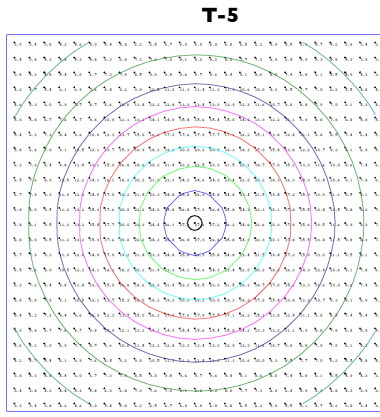
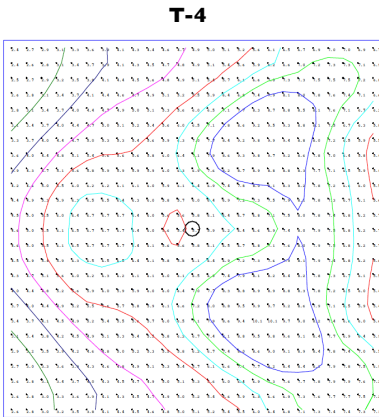
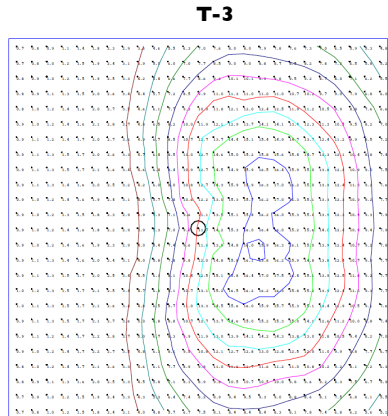
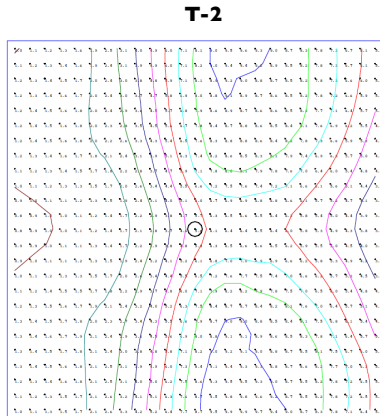
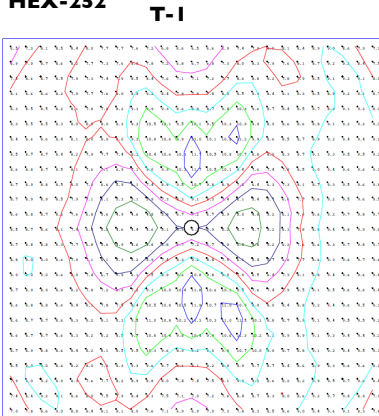
AREALIGHT.T
 All products feature Noribachi's exclusive Bespoke Engineered and Specifically Tailored (BEST) manufacturing methodology.

CATALOG #:	TYPE:
PROJECT:	
COMMENTS:	DATE:
PREPARED BY:	

PERFORMANCE / DISTRIBUTION

Power And Lumens By Light Engine							
DISTRIBUTION							
LIGHT ENGINE	DRIVE	CCT	T1 (LUMENS)	T2 (LUMENS)	T3 (LUMENS)	T4 (LUMENS)	T5 (LUMENS)
HEX-021	B	5700	4,354	3,450	4,209	3,988	4,431
HEX-042	B	5700	8,708	6,899	8,419	7,976	8,862
HEX-063	B	5700	13,062	10,349	12,628	11,963	13,293
HEX-084	B	5700	17,416	13,799	16,837	15,951	17,723
HEX-105	B	5700	21,770	17,248	21,047	19,939	22,154
HEX-126	B	5700	26,124	20,698	25,256	23,927	26,585
HEX-168	B	5700	34,832	27,597	33,674	31,902	35,447
HEX-210	B	5700	43,540	34,496	42,093	39,878	44,308
HEX-252	B	5700	52,247	41,396	50,512	47,853	53,170

**Type Distribution
 HEX-252**



Distribution

- 120° Standard Beam Spread.
- 80° Optional Beam Spread available.
- Left (TLS) Slant and Right (TRS) Slant available.
- Other Light Engine Type Distribution available upon request.

•IES Type Distributions are generated in an open space.
 •Light Distribution images are mounted at 10 feet.

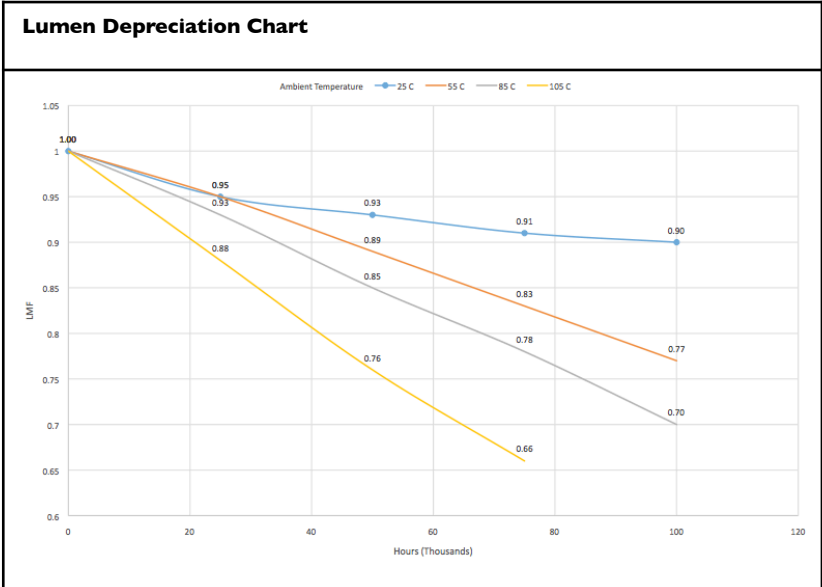
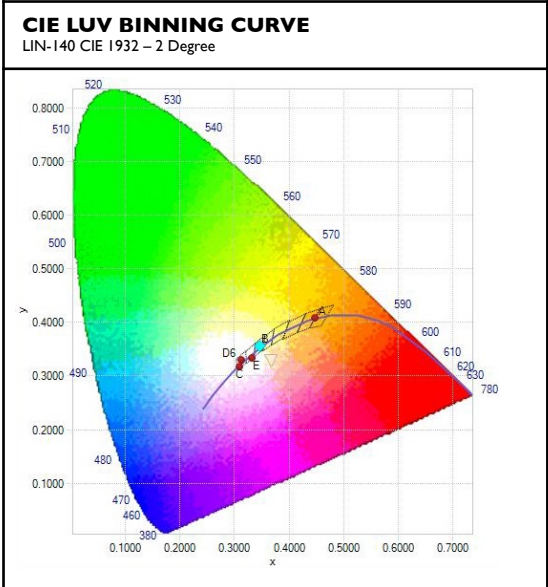
WHEN APPROVED, THE SPECIFICATIONS OUTLINED IN THIS SPEC SHEET SHALL BECOME THE SPECIFICATION FOR THE MATERIAL TO BE DELIVERED BY NORIBACHI ON THE CITED PROJECT. AN AMENDED SPEC SHEET CAN BE PROVIDED BUT ONLY AFTER WRITTEN APPROVAL BY THE CUSTOMER IS RECEIVED. THIS DOCUMENT IS THE PROPERTY OF NORIBACHI AND CAN ONLY BE USED IN CONNECTION WITH MATERIALS FURNISHED BY NORIBACHI. ©2015



AREALIGHT.T
 All products feature Noribachi's exclusive Bespoke Engineered and Specifically Tailored (BEST) manufacturing methodology.

CATALOG #:	TYPE:
PROJECT:	DATE:
COMMENTS:	
PREPARED BY:	

PERFORMANCE / DISTRIBUTION



v2.1

Lumen Maintenance Factors (B Drive)					
AMBIENT	INITIAL LMF	25K HR PROJECTED LMF	50K HR PROJECTED LMF	75K HR PROJECTED LMF	100K HR PROJECTED LMF
25°C	1.00	0.95	0.93	0.91	0.90
55°C	1.00	0.95	0.89	0.83	0.77
85°C	1.00	0.93	0.85	0.78	0.70
105°C	1.00	0.88	0.76	0.66	n/a

Each temperature has an independent initial value. In accordance with IESNA TM021011, Projected Values represent interpolated value based on time durations that are within six times (6X) the IESNA LM-80-08 total test duration (in hours) for the device under testing (DUT) i.e. the packaged LED chip. In accordance with IESNA TM-21-11, Calculated Values represent time durations that exceed six times (6X) the IESNA LM-80-08 total test duration (in hours) for the device under testing (DUT) i.e. the packaged LED chip

Luminaire EPA Chart

	Single	0.5
	ND-180°	1.0
	ND-90°	0.8
	NT-90°	1.7
	NT-120°	1.7
	NQ-90°	1.9

Note: Mounting changes fixture EPA. Please contact Noribachi for additional information.

Lumen Multiplier

AMBIENT TEMPERATURE	LUMEN MULTIPLIER
10°C	1.032
15°C	1.021
25°C	1.000
40°C	0.968
50°C	0.946

WHEN APPROVED, THE SPECIFICATIONS OUTLINED IN THIS SPEC SHEET SHALL BECOME THE SPECIFICATION FOR THE MATERIAL TO BE DELIVERED BY NORIBACHI ON THE CITED PROJECT. AN AMENDED SPEC SHEET CAN BE PROVIDED BUT ONLY AFTER WRITTEN APPROVAL BY THE CUSTOMER IS RECEIVED. THIS DOCUMENT IS THE PROPERTY OF NORIBACHI AND CAN ONLY BE USED IN CONNECTION WITH MATERIALS FURNISHED BY NORIBACHI. ©2015



AREALIGHT.T
 All products feature Noribachi's exclusive Bespoke Engineered and Specifically Tailored (BEST) manufacturing methodology.

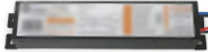
CATALOG #:	TYPE:
PROJECT:	
COMMENTS:	DATE:
PREPARED BY:	

OPTIONAL UPGRADES

480V FOR LIGHT ENGINES <150W
ORDER CODAE: HV1



480V FOR LIGHT ENGINES >150W
ORDER CODE: HV2



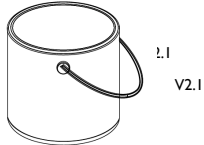
DIMMING
ORDER CODE: 010V
ORDER CODE: STEP
 Appearance And Specifications:
 •010V = 1 – 10V Dimming Functionality
 •STEP = Step Dimming Functionality



SURGE PROTECTOR
ORDER CODE: SGR1
ORDER CODE: SGR2
ORDER CODE: SGR4
 Appearance And Specifications:
 •120V Surge Protector
 •277V Surge Protector
 •480V Surge Protector



CUSTOM FIXTURE COLOR
ORDER CODE: COL-[RAL]
 Appearance And Specifications:
 •Choose a custom color for your fixture.
 •RAL color code must be provided.



MARINE GRADE FIXTURE COATING
ORDER CODE: COAT
 Appearance And Specifications:
 •Add a Marine Grade coating to your fixture.
 •Coating appearance is green.



EPOXY COATING
ORDER CODE: EPOXY
 Appearance And Specifications:
 •Add epoxy coating to your fixture.



WHEN APPROVED, THE SPECIFICATIONS OUTLINED IN THIS SPEC SHEET SHALL BECOME THE SPECIFICATION FOR THE MATERIAL TO BE DELIVERED BY NORIBACHI ON THE CITED PROJECT. AN AMENDED SPEC SHEET CAN BE PROVIDED BUT ONLY AFTER WRITTEN APPROVAL BY THE CUSTOMER IS RECEIVED. THIS DOCUMENT IS THE PROPERTY OF NORIBACHI AND CAN ONLY BE USED IN CONNECTION WITH MATERIALS FURNISHED BY NORIBACHI. ©2015

