

LEDSION SHOEBOX AREA LUMINAIRE



Project Information _____

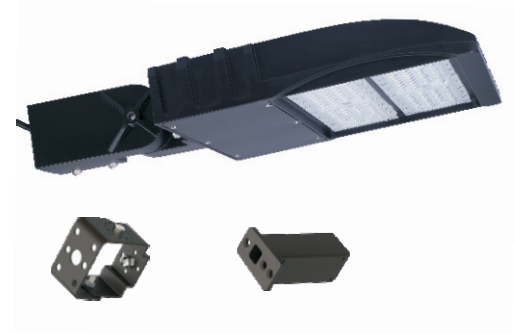
Type _____

Name _____

Voltage _____

Product Description

LEDSION shoebox led luminaire has a beautiful low profile design intended for outdoor wall mounted applications, combines the latest in LED technology including weathertight Ip65 LED driver and thermal management. High-performance illumination that lasts 50,000HRS.It's ideal for replacing 100-600W Metal Halide, with typical energy savings of 80%.



Applications

Parking Lot, Road Ways, Square Parks, Outdoor Lighting Area Lights etc.



Electric Characteristic

Specification/Model	LS-ESB60SST3 A1	LS-ESB90SST3 A1	LS-ESB120SST3 A1	LS-ESB150HLT3 A1	LS-ESB185WAT3 A1	LS-ESB240WAT3 A1	LS-ESB300WAT3 A1
LED Chips	PHILIPS 3030						
Input power	60W	90W	120W	150W	185W	240W	300W
Lumens output	7800LM	11700LM	15600LM	19500LM	24050LM	31200LM	39000LM
Efficiency	130LM/W	130LM/W	130LM/W	130LM/W	130LM/W	130LM/W	130LM/W
CRI	>72Ra						
Color Temperature	5000K						
Input voltage	100-277V UL Driver			100-277VAC/200-480VAC MW driver			
Light distribution type	TypeIII Type V						
Working temperature	-30~+60°C						
Junction temperature	<75°C						
lamps efficiency	≥90%						
Certificate	UL,cUL,DLC						
Equivalent	100-150W MH/HPS	175-200W MH/HPS	200-250W MH/HPS	250-400W MH/HPS	400-450W MH/HPS	450-500W MH/HPS	500-600W MH/HPS

Ordering Information

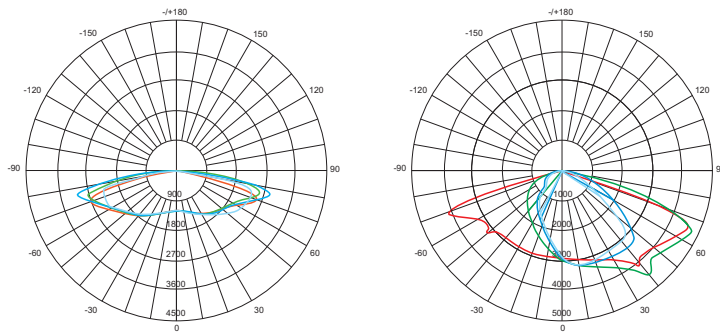
Example: LS-ESB60SST3-40K-N-U-T-A

Product	Power	Replacement	Color Temperature	Photocell	Furnish	Head connector
LS-ESB6SST3 A1	60W 2 module	100-150W MH/HPS	40K 4000K 50K 5000K	N not photocell Y yes photocell	T-Black Z-Brown C-Coffe	A: see below
LS-ESB90SST3 A1	90W 2 module	175-200W MH/HPS				B
LS-ESB120SST3 A1	120W 2 module	200-250W MH/HPS				C
LS-ESB150HLT3 A1	150W 2 module	250-400W MH/HPS				
LS-ESB185WAT3 A1	185W 2 module	400-450W MH/HPS				
LS-ESB240WAT3 A1	240W 2 module	450-500W MH/HPS				
LS-ESB300WAT3 A1	300W 2 module	500-600W MH/HPS				

Connector options



Photometrics



Type v

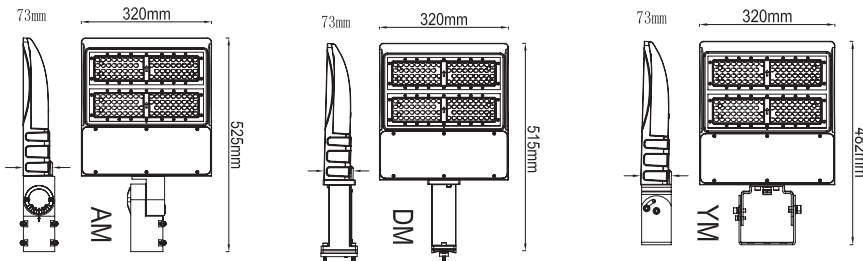
Type III

Projected LED Lumen Maintenance

Operating hours	0	25000	50000
Lumen maintenance factor	1	0.91	0.8

Data references the extrapolated performance projections for the SHOEBOX LED platform in a 25°C ambient, based on 10,000 hours of LED testing (tested per IESNA LM-80-08 and projected per IESNA TM-21-11).

Dimensions



After-sale Service

The product refers to electricians knowledge. Please don't disassemble it by yourself. If any quality problem happens, please contact the factory for warranty details.

NOTE: Actual performance may differ as a result of end-user environment and application. All values are without notice.