

LED Grow Light

Smart Controlling System Series

James's Smart controlling grow light series is our flagship product in 2017. It's our chief engineer honor design, who has more than 20 years experience in LED Luminaires field. This fixture emits all the wavelengths of light which can be fully absorbed by the plants to create photosynthesis and promote healthy growth budding and flowering. You have no damaging risk under our 3 years warranty, it's much longer than 1 year warranty from other common grow light manufacturer. This series have 1 head to 16 heads COB light, it will give you more options when your plants need different strength of illumination.



LED Grow Light

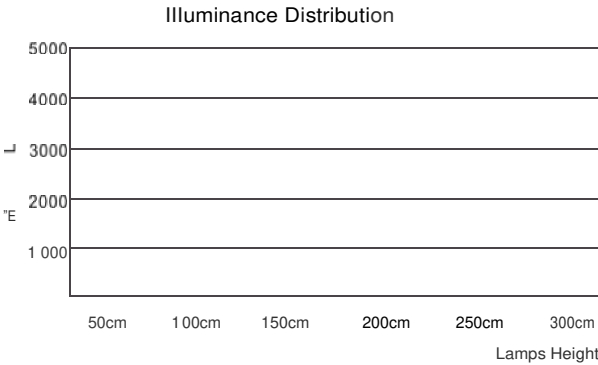
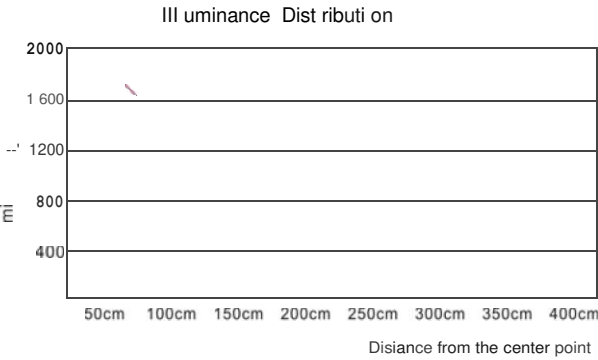
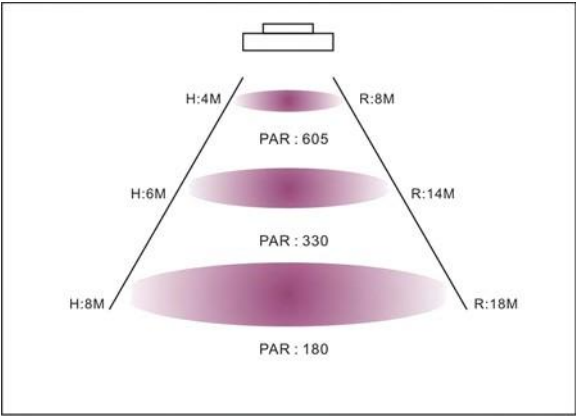
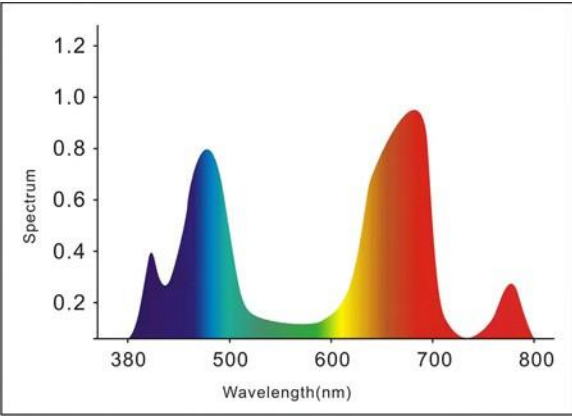
Smart Controlling System Series



- Triple types of on/off devices including hand movement, touch, and remote control, making operation much easier and flexible
- Step dimming and full range dimming for different illuminating effect and different period of growth as well
- Adjustable power consumption and lumen area
- Work temperature detection system to make turntable work properly and long lifespan
- Full spectrum for different period of growth
- High power branded Epistar with high PAR value
- Including special spectrum like IR (infrared) and UV LED to increase the yield.
- Top quality fans with low noise
- Energy saving, environmental friendly
- Much more convenient repair and replacement in the future

Hydroponics, Horticulture, Agriculture and Greenhouse
Seeding, Rooting, Breeding, Flowering and Fruiting period
Suitable Locations: Farm, Exhibition, Garden, Home, Urban, Bonsai, and University Lab
Growth of Fruits, Vegetables, Flowers, Marijuana and so on

Product Number	HPS/HID Replace	Power Consumption	Light Spectrum	Height above plants (m)	Lumens	Input Voltage	Lifespan
GL-J300W 8Y2	800W	300W	Full Spectrum	0.5-2.5meter	15000	AC100-277V	50000hours
GL-J500W 8Y2	1200W	500W	Full Spectrum	0.5-2.5meter	25000	AC100-277V	50000 hours
GL-J650W 8Y2	1500W	650W	Full Spectrum	0.5-2.5meter	32500	AC100-277V	50000 hours

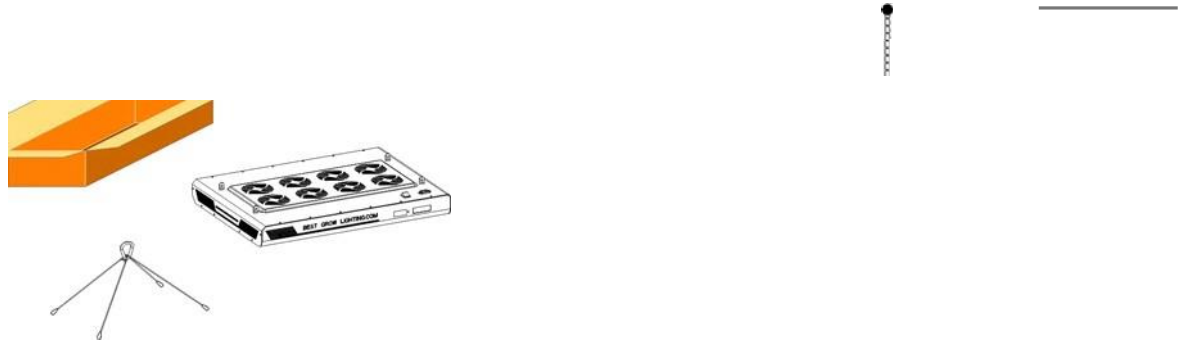


Our engineers have focused on grow light development more than 5 years, so our installation methods are always easy and fast. You even don't need a professional person to complete it.

! WARNING
RISK OFFIRE, ELECTRICAL SHOCKS OR PERSONAL INJURY
Before installation, turn power off.



The specific steps of installation



1, Take out the fixture and accessory from cartoon box,

2. Fix chain to the point of installation, make sure the point of installation can bear at least 50 Kg weight.



440nm Blue



460nm Blue



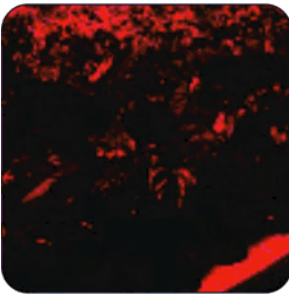
525nm Green



625nm Red

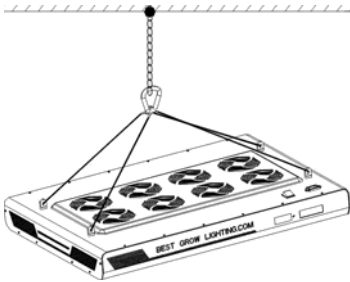


660nm Deep Red

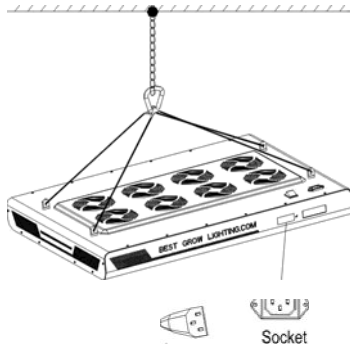


730nm Deep Red

380nm to 800 nm wavelength full spectrum Our supplemental spectrum LED lights are perfect for plants, which want to supplement their existing lighting system



3. Install the hook across chain, adjust the high and level, let the light suitable for plants.



4. Match the power cable plug with socket, and turn on the power to test luminaires.