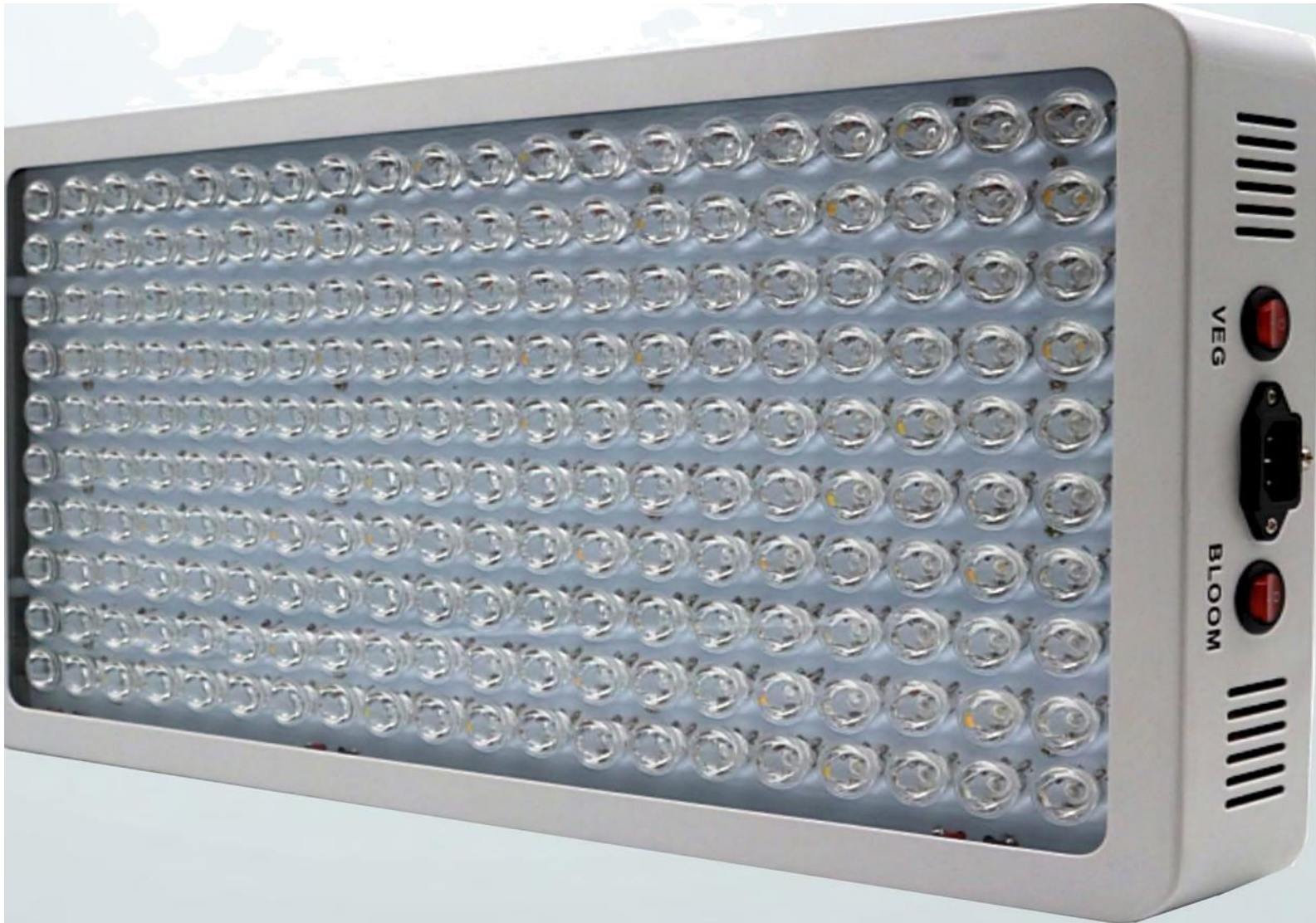


General Description

This series is our premier product push for America & Canada market, many clients have given a good feedback these years, what're regarding low repair rate and high efficiency. High quality fans ensure the heat dissipation. Marijuana will grow better under the Full Spectrum LED Grow Lights, as well their yield will increase hugely. We recommend that Hydroponic growing systems can be simple affairs such as Wick or NFT or more complex indoor growing concepts like Sea of Green or Screen of Green or large grow systems, so our full spectrum LED lights is a smart choice for your plants.



LED Grow Light

Traditional High Bay series



Traditional High Bay Series



c RoHS



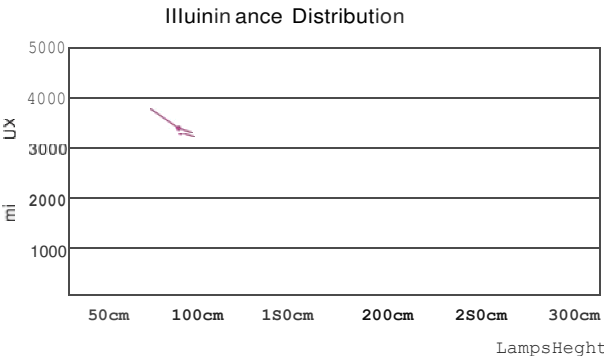
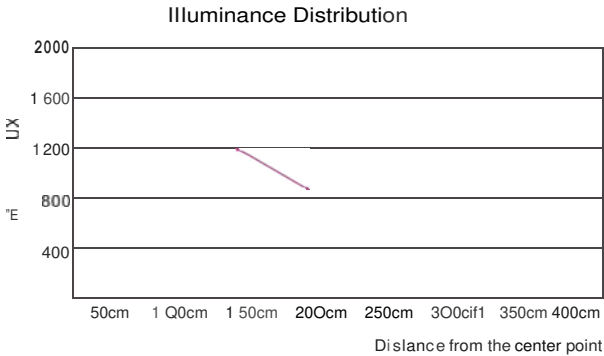
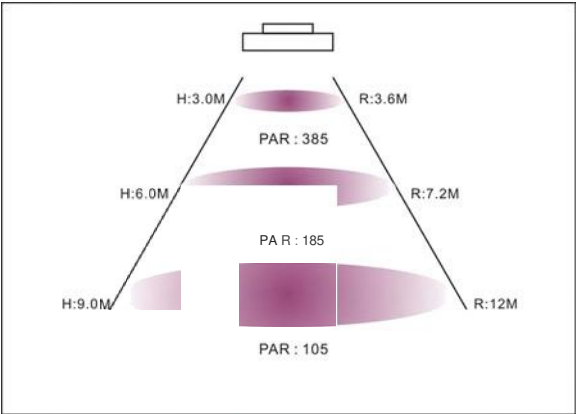
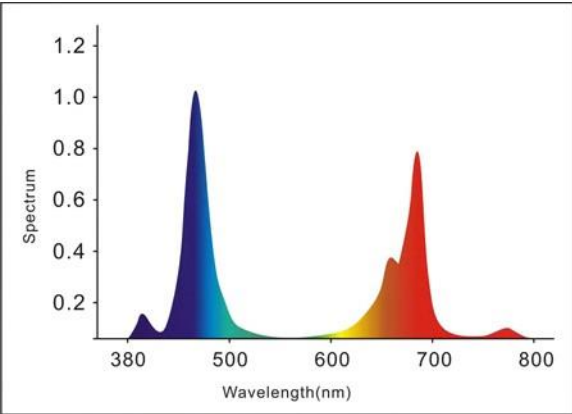
Features

- On/off devices to make control I much easier
 - High power branded 5W Epilepsy with High Par Value e
 - 90° Secondary LED focusing Ines
 - Vegetable and Bloom period switch
 - 9 band full spectrum
 - Full spectrum for different period-d of growth
 - Best fans, Quiet and anti-noise
 - Including Special spectrum like provides by IR (Infrared) and UV LED to increase the yield
 - Passive heat sink and integrated driver
 - Energy Saving , environmental friendly
 - Much more convenient repairment and replacement in the future
-
- Hydroponics, Horticulture, Agriculture and Greenhouse
 - Seeding, Rooting, Breeding, Flowering and Fruiting period
 - Locations: Farm, Exhibition, Garden, Home, Urban, Bonsai, and University Lab
 - Growth of Fruits, Vegetables, Flowers, Marijuana and so on

Typic al in od el spec ifi cat io o

Product Number	HPS/HID Replace	Power Consume	Light Spectrum	Heigh above plants (ft)	Lomens	Input Voltage	Lifespan
GL-B120W BYZ	300W	120W	Full Spectrum	0.5-1 meter	6000	AC100-277V	50000 hours
GL-C240W BYZ	600W	240W	Full Spectrum	0.5-1 meter	12000	AC100-277V	50000 hours
GL-I400W BYZ	1000W	400W	Full Spectrum	0.5-1 meter	18000	AC100-277V	50000 hours

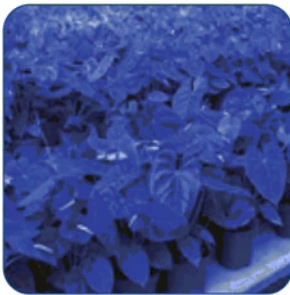
Optical parameters



Spectrum



440nm Royal Blue



460nm Blue



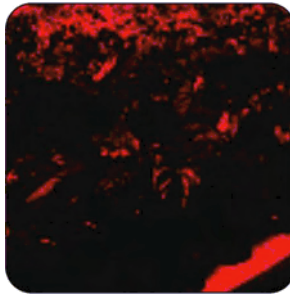
525nm Green



660nm Deep Red



660nm Deep Red



730nm Deep Red

380nm to 800 nm wavelength full spectrum Our supplemental spectrum LED lights are perfect for plants, which can't to supplement their existing lighting system.

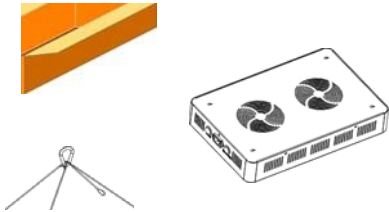
Regarding Installation

Our engineers have focused on grow light development more than 5 years, so our installation methods are always easy and fast. You even don't need a professional person to complete it.

AWARNING
RISK OFFIRE,ELECTRIC SHOCK OR PERSONAL INJURY
Before installation, turn power off.

The specific steps of installation

1



2



1. Take out the fixture and accessories from the carton

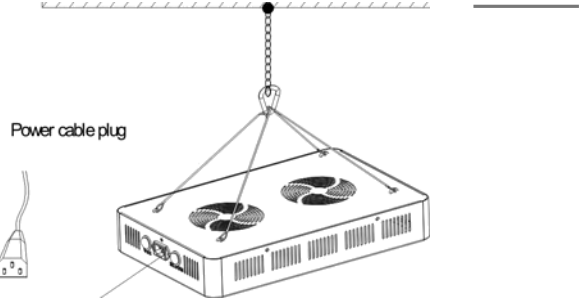
2. Fix chain to the point of installation, make sure the weight can bear at least 50kg at point of installation

3



3. Install the hook across the chain, adjust the height and level, let the light suit the plants

4



4. Match the power cable plug with the socket, finally turn on the power to test the light.