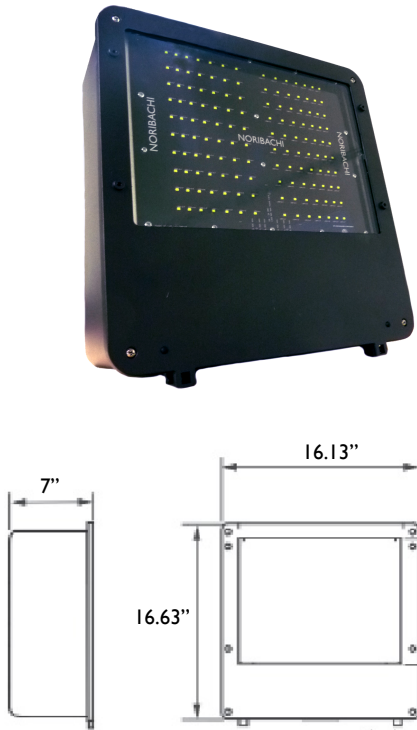


SHOEBOX.M

All products feature Noribachi's exclusive Bespoke Engineered and Specifically Tailored (BEST) manufacturing methodology.

PRODUCT

CATALOG #:	TYPE:
PROJECT:	
COMMENTS:	DATE:
PREPARED BY:	

Product Information

The Shoebox.M is a medium sized, efficient, high-output LED lighting fixture.

This LED lighting fixture features die-cast aluminum housing, hinged top frame and bronzed powdercoat finish over chromate conversion coating.

Applications: Corporate Campuses, Parking Lots, Recreational Facilities and a variety of outdoor lighting applications.

Performance Summary

Lumens Range:	13,293 lm – 29,540 lm
Lumens Per Watt (Typical):	141
Light Engine:	L70 Rated Lifetime of 100,000+ hours.
CRI:	Minimum 70 CRI. Custom CRI available upon request.

CCT (Typical): 3000K, 4000K, 5700K
Manufactured in the U.S. with parts from U.S. and imported.

Fixture Information

Housing:	Bronze / Custom
Lens:	Tempered Glass
Mounting:	Trunnion / Slip-fitter
Diffusion:	None / Luminite Film

Specifications*

EPA Rating:	0.96
IP Rating:	65
Length:	16.63"
Width:	16.13"
Depth:	7"
Weight:	15.65 lbs

*Specifications are subject to change without notice.

Electrical System Characteristics / Data

Standard AC input:	120-277 VAC
EMI filter:	47CFR, part 2, part 15
Power factor:	> 0.9
Total harmonic distortion:	< 20%
Surge protection:	IEC/EN 61000-4-5 EMC test standard

Electrical characteristics and performance data verified by Nationally Recognized Testing Labs (NRTL). For full reports and results, visit www.noribachi.com/reports.

Ordering Information Sample Catalog Number: LIN-140-B-VVV-MT-SBM						
LIGHT ENGINE	DRIVE CURRENT	COLOR TEMPERATURE	VOLTAGE	FIXTURE CODE	OPTIONAL UPGRADES	OPTIONAL BEAM SPREAD AND TYPE DISTRIBUTION
HEX-063 LIN-072 HEX-084 HEX-105 HEX-126 LIN-140	B B B B B B	CW – COOLWHITE (5700K TYPICAL) NW – NEUTRAL WHITE (4000K TYPICAL) WW – WARM WHITE (3000K TYPICAL)	MT	SBM – SHOEBOX.M	PC1 – 120V BUTTON PHOTOCELL PC2 – 240-277V BUTTON PHOTOCELL TR – TRUNNION MOUNT SF – SLIP-FITTER MOUNT HV1 – 480V UP TO 150W HV2 – GREATER THAN 150W FLAM – HEAVY-DUTY ADJUSTABLE DIRECT POLEARM WG – WIRE GUARD AM6 – 6" ARM MOUNT AM10 – 10" ARM MOUNT AM6R – 6" ARM MOUNT FOR ROUND POLE+ AM10R – 10" ARM MOUNT FOR ROUND POLE+ SQ90BRK – WALL MOUNT 90 DEGREE BRACKET PMOCC120 – POLE MOUNTED OCCUPANCY SENSOR 120V PMOCC277 – POLE MOUNTED OCCUPANCY SENSOR 277V SH – SHIELD V – VISOR SQBRK – WALL MOUNT BRACKET** COL [RAL] – CUSTOM FIXTURE COLOR COAT – MARINE GRADE FIXTURE COATING EPOXY – EPOXY COATING SGR1 – 120V SURGE PROTECTOR SGR2 – 277V SURGE PROTECTOR SGR4 – 480V SURGE PROTECTOR 010V – 1-10V DIMMING FUNCTIONALITY STEP – STEP DIMMING FUNCTIONALITY +MUST PROVIDE POLE DIAMETER IN ORDER **MUST PROVIDE EXACT VOLTAGE REQUIREMENTS **6" OR 10" MOUNT REQUIRED	80D – OPTIONAL 80° BEAM SPREAD T1 – OPTIONAL TYPE 1 DISTRIBUTION T2 – OPTIONAL TYPE 2 DISTRIBUTION T3 – OPTIONAL TYPE 3 DISTRIBUTION T4 – OPTIONAL TYPE 4 DISTRIBUTION TRS or TLS – OPTIONAL RIGHT OR LEFT SLANTED DISTRIBUTION

Warranty:

Five-Year Limited Warranty. Optional 10-Year Manufacturer's Warranty Available. Full Warranty Terms Available At www.noribachi.com/products/warranty

WHEN APPROVED, THE SPECIFICATIONS OUTLINED IN THIS SPEC SHEET SHALL BECOME THE SPECIFICATION FOR THE MATERIAL TO BE DELIVERED BY NORIBACHI ON THE CITED PROJECT. AN AMENDED SPEC SHEET CAN BE PROVIDED BUT ONLY AFTER WRITTEN APPROVAL BY THE CUSTOMER IS RECEIVED. THIS DOCUMENT IS THE PROPERTY OF NORIBACHI AND CAN ONLY BE USED IN CONNECTION WITH MATERIALS FURNISHED BY NORIBACHI.

©2015



SHOEBOX.M

All products feature Noribachi's exclusive Bespoke Engineered and Specifically Tailored (BEST) manufacturing methodology.

CATALOG #:	TYPE:
PROJECT:	
COMMENTS:	DATE:
PREPARED BY:	

ELECTRICAL

Construction

Die-cast aluminum housing with textured architectural bronze powdercoat finish over a chromate conversion coating with tempered clear glass. Features, hinged top frame, 1/2" coin plugs with O-rings for conduit and photocell. Optional Shield (SH), Visor (V) and Wire Guard (WG) available.

Optics

High brightness, high efficiency LEDs. Color temperature options include Cool White (5700K typical), Neutral White (4000K typical) Warm White (3000K typical) with minimum 70 CRI. Custom RGBV colors available. 120° beam angle standard. Optional 80° beam angle available. Optional T1 – T5 light distribution available. Right (TRS) or Left (TLS) Slanted light distribution also available.

Controls

Control options include 120V (PC1) and 240-277V (PC2) button photocells. 480V for up to 150W light engines (HV1) AMD 480V for greater than 150W light engines (HV2) available. Emergency Battery Backup (EM) and Emergency Battery Backup, Cold (EMC). 120V (SGR1), 277V (SGR2) and 480V (SGR4) Surge Protectors. 0-10V (010V) and Step (STEP) Dimming functionality available. Pole Mounted Occupancy Sensor for 120V (PMOCC120) and 277V (PMOCC277) also available.

Mounting

Mounting options include Trunnion (TR), Slip-fitter (SF) and Heavy-duty Adjustable Direct Pole Arm (FLAM). 6" Pole Mount for Round Arm (AM6R) and 10" Pole Mount for Round Mount (AM10R). Wall Mount Bracket (SQBRK).

Driver

Available in B drive current (525 mA). Highly reliable. Suitable for dry, damp and wet locations. Compliant to worldwide safety regulations for lighting.

Testing Compliance

UL 1598 Issued: 2008/09/17 Ed:3 Rev:2012/10/17 UL Standard for Safety Luminaires CSA C22.2#250.0 Issued: 2008/09/17 Ed:3 Luminaires; General Instruction No.1 2010/01/11, General Instruction No. 2 2012/10/17

Electrical System

Surge protection meets 10KV/5KA per ANSI/IEEE62.41. Driver meets maximum harmonic distortion (THD) of 20% and is ROHS compliant. Power Factor = > 0.9.

Ambient Temperature

-40°C to +65°C (-40°F to + 149°F).

Electrical Load

LIGHT ENGINE	DRIVE	DRIVE CURRENT (AMPS@120V)	DRIVE CURRENT (AMPS@277V)	DRIVE CURRENT (AMPS@480V)	SYSTEM POWER* (WATTS)
HEX-063	B	0.79	0.34	0.20	94.70
LIN-072	B	0.90	0.39	0.23	108.30
HEX-084	B	1.05	0.46	0.26	126.48
HEX-105	B	1.32	0.57	0.33	158.38
HEX-126	B	1.59	0.69	0.40	190.38
LIN-140	B	1.76	0.76	0.44	211.78
*Ideal Wattage					

Operating Characteristics (Typical @5700K CCT)

LIGHT ENGINE	DRIVE	LUMENS (T5)	INPUT POWER (WATTS)	LUMENS PER WATT	REPLACES
HEX-063	B	13,293	94.70	140.37	200-400W
LIN-072	B	15,191	108.30	140.27	225-435W
HEX-084	B	17,723	126.48	140.13	300-525W
HEX-105	B	22,154	158.38	139.88	400-650W
HEX-126	B	26,585	190.38	139.64	550-800W
LIN-140	B	29,539	211.78	139.48	750-1000W

Manufacturing

Manufactured in beautiful Harbor City, CA. ARRA Compliant. NAFTA Compliant. Test and burn-in of 100% of all luminaires before shipment. No less than 8-years experience in manufacturing LED-based products.

Note

Specifications subject to change without notice. Actual performance may differ as a result of end-user environment application. Actual wattage may differ by +/- 8%.

WHEN APPROVED, THE SPECIFICATIONS OUTLINED IN THIS SPEC SHEET SHALL BECOME THE SPECIFICATION FOR THE MATERIAL TO BE DELIVERED BY NORIBACHI ON THE CITED PROJECT. AN AMENDED SPEC SHEET CAN BE PROVIDED BUT ONLY AFTER WRITTEN APPROVAL BY THE CUSTOMER IS RECEIVED. THIS DOCUMENT IS THE PROPERTY OF NORIBACHI AND CAN ONLY BE USED IN CONNECTION WITH MATERIALS FURNISHED BY NORIBACHI. ©2015



SHOEBOX.M

All products feature Noribachi's exclusive Bespoke Engineered and Specifically Tailored (BEST) manufacturing methodology.

CATALOG #:

TYPE:

PROJECT:

COMMENTS:

DATE:

PREPARED BY:

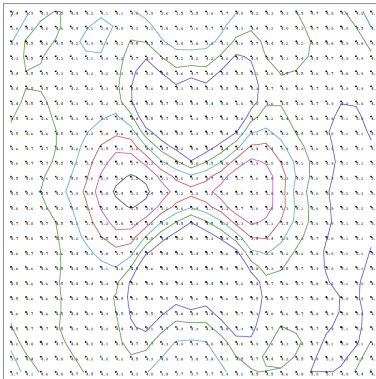
PERFORMANCE / DISTRIBUTION

Power And Lumens By Light Engine

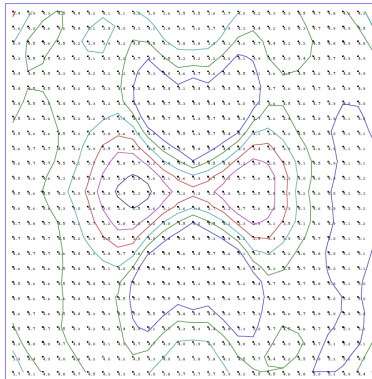
DISTRIBUTION							
LIGHT ENGINE	DRIVE	CCT	T1 (LUMENS)	T2 (LUMENS)	T3 (LUMENS)	T4 (LUMENS)	T5 (LUMENS)
HEX-063	B	5700	13,062	10,349	12,628	11,963	13,293
LIN-072	B	5700	14,928	11,827	14,432	13,672	15,191
HEX-084	B	5700	17,416	13,799	16,837	15,951	17,723
HEX-105	B	5700	21,770	17,248	21,047	19,939	22,154
HEX-126	B	5700	26,124	20,698	25,256	23,927	26,585
LIN-140	B	5700	29,026	22,998	28,062	26,585	29,539

Type Distribution LIN-140

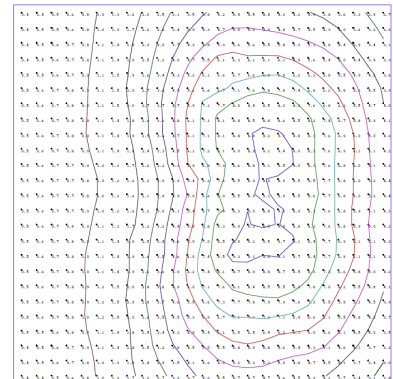
T-1



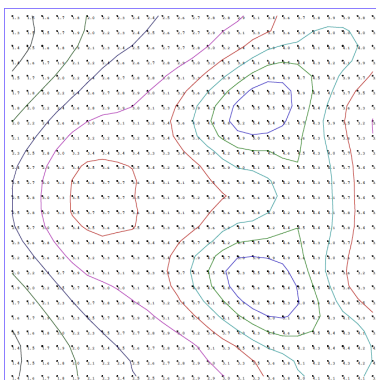
T-2



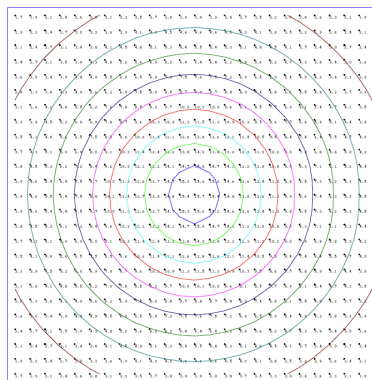
T-3



T-4



T-5



Distribution

- 120° Standard Beam Spread.
- 80° Optional Beam Spread Available.
- T1 – T5 Light Distribution Available.
- Right (TRS) or Left (TLS) Slanted Distribution Available.
- Other Light Engine Type Distribution Available Upon Request.

- IES Type Distributions are generated in an open space.
- Light Distribution images are mounted at 10 feet.

WHEN APPROVED, THE SPECIFICATIONS OUTLINED IN THIS SPEC SHEET SHALL BECOME THE SPECIFICATION FOR THE MATERIAL TO BE DELIVERED BY NORIBACHI ON THE CITED PROJECT. AN AMENDED SPEC SHEET CAN BE PROVIDED BUT ONLY AFTER WRITTEN APPROVAL BY THE CUSTOMER IS RECEIVED. THIS DOCUMENT IS THE PROPERTY OF NORIBACHI AND CAN ONLY BE USED IN CONNECTION WITH MATERIALS FURNISHED BY NORIBACHI. ©2015



SHOEBOX.M

All products feature Noribachi's exclusive Bespoke Engineered and Specifically Tailored (BEST) manufacturing methodology.

CATALOG #:

TYPE:

PROJECT:

COMMENTS:

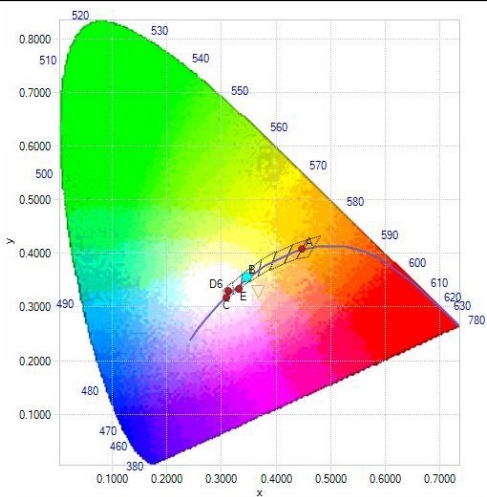
DATE:

PREPARED BY:

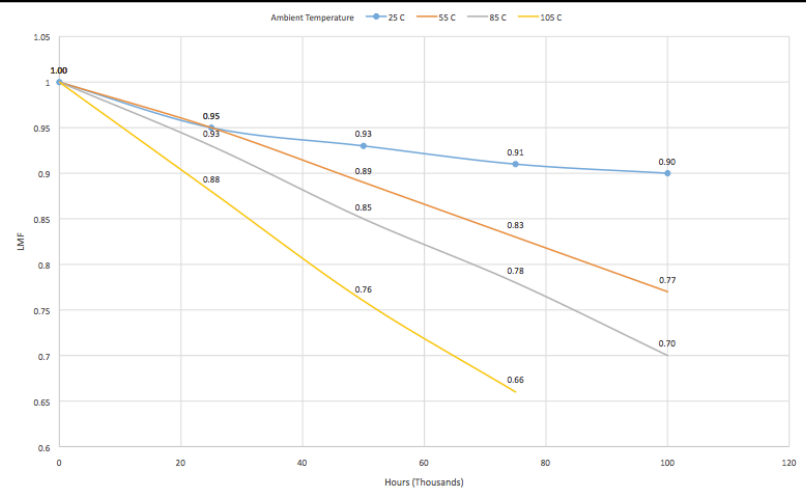
PERFORMANCE / DISTRIBUTION

CIE LUV BINNING CURVE

LIN-140 CIE 1932 - 2 Degree



Lumen Depreciation Chart



Lumen Maintenance Factors (B Drive)

AMBIENT	INITIAL LMF	25K HR PROJECTED LMF	50K HR PROJECTED LMF	75K HR PROJECTED LMF	100K HR PROJECTED LMF
25°C	1.00	0.95	0.93	0.91	0.90
55°C	1.00	0.95	0.89	0.83	0.77
85°C	1.00	0.93	0.85	0.78	0.70
105°C	1.00	0.88	0.76	0.66	n/a

Each temperature has an independent initial value. In accordance with IESNA TM021011, Projected Values represent interpolated value based on time durations that are within six times (6X) the IESNA LM-80-08 total test duration (in hours) for the device under testing (DUT) i.e. the packaged LED chip). In accordance with IESNA TM-21-11, Calculated Values represent time durations that exceed six times (6X) the IESNA LM-80-08 total test duration (in hours) for the device under testing (DUT) i.e. the packaged LED chip).

Luminaire EPA Chart

	Single	0.5
	ND-180°	1.0
	ND-90°	0.8
	NT-90°	1.7
	NT-120°	1.7
	NQ-90°	1.9

Note: Mounting changes fixture EPA. Please contact Noribachi for additional information.

Lumen Multiplier

AMBIENT TEMPERATURE	LUMEN MULTIPLIER
10°C	1.032
15°C	1.021
25°C	1.000
40°C	0.968
50°C	0.946

WHEN APPROVED, THE SPECIFICATIONS OUTLINED IN THIS SPEC SHEET SHALL BECOME THE SPECIFICATION FOR THE MATERIAL TO BE DELIVERED BY NORIBACHI ON THE CITED PROJECT. AN AMENDED SPEC SHEET CAN BE PROVIDED BUT ONLY AFTER WRITTEN APPROVAL BY THE CUSTOMER IS RECEIVED. THIS DOCUMENT IS THE PROPERTY OF NORIBACHI AND CAN ONLY BE USED IN CONNECTION WITH MATERIALS FURNISHED BY NORIBACHI.

©2015



SHOEBOX.M

All products feature Noribachi's exclusive Bespoke Engineered and Specifically Tailored (BEST) manufacturing methodology.

CATALOG #:	TYPE:
PROJECT:	
COMMENTS:	DATE:
PREPARED BY:	

OPTIONAL UPGRADES

For additional optional upgrades, please contact your Noribachi Account Manager.

BUTTON PHOTOCELL 110V-130V

ORDER CODE: PC1

Appearance And Specifications:

- Rain Tight For Outdoor Use
- 12" Leads
- Thermal Switch
- Polycarbonate Enclosure & Eye
- 1/2" CdS Photocell
- 3/8" – 19 Thread Nipple with Rubber Gasket & Plastic Lock-Nut



DIMMING

ORDER CODE: 010V

ORDER CODE: STEP

Appearance And Specifications:

- 010V = 1 – 10V Dimming Functionality
- STEP = Step Dimming Functionality
- *Compatibility not guaranteed for any particular dimmable light in any particular installation.



BUTTON PHOTOCELL 240V-277V

ORDER CODE: PC2

Appearance And Specifications:

- Rain Tight For Outdoor Use
- 12" Leads
- Thermal Switch
- Polycarbonate Enclosure & Eye
- 1/2" CdS Photocell
- 3/8" – 19 Thread Nipple with Rubber Gasket & Plastic Lock-Nut



SURGE PROTECTOR

ORDER CODE: SGR1

ORDER CODE: SGR2

ORDER CODE: SGR4

Appearance And Specifications:

- 120V Surge Protector
- 277V Surge Protector
- 480V Surge Protector



480V FOR UP TO 150W LIGHT ENGINES

ORDER CODE: HVI



480V FOR GREATER THAN 150W LIGHT ENGINES

ORDER CODE: HV2



HANDLEYOKE

ORDER CODE: HY

Appearance And Specifications:

- Bronze or Custom Color
- Includes "No Tools Needed" Aiming Adjustment



POLE MOUNTED OCCUPANCY SENSOR

ORDER CODE: PMOCC120

ORDER CODE: PMOCC277

Appearance And Specifications

- Weatherproof and rain tight
- Operational in -40° to 130°F
- 52.5 ft sensor coverage
- 270° field of view



WHEN APPROVED, THE SPECIFICATIONS OUTLINED IN THIS SPEC SHEET SHALL BECOME THE SPECIFICATION FOR THE MATERIAL TO BE DELIVERED BY NORIBACHI ON THE CITED PROJECT. AN AMENDED SPEC SHEET CAN BE PROVIDED BUT ONLY AFTER WRITTEN APPROVAL BY THE CUSTOMER IS RECEIVED. THIS DOCUMENT IS THE PROPERTY OF NORIBACHI AND CAN ONLY BE USED IN CONNECTION WITH MATERIALS FURNISHED BY NORIBACHI.

©2015



SHOEBOX.M

All products feature Noribachi's exclusive Bespoke Engineered and Specifically Tailored (BEST) manufacturing methodology.

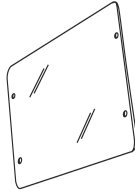
CATALOG #:	TYPE:
PROJECT:	
COMMENTS:	DATE:
PREPARED BY:	

OPTIONAL UPGRADES

SHIELD

ORDER CODE: SH

Appearance And Specifications:
•Polycarbonate



VISOR

ORDER CODE: V

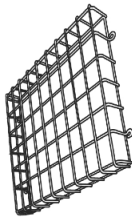
Appearance And Specifications:
•Aluminum
•Bronze Powdercoat Finish



WIREGUARD

ORDER CODE: WG

Appearance And Specifications:
•Steel Wire
•Chromized Coating



HEAVY-DUTY ADJUSTABLE DIRECT POLE ARM

ORDER CODE: FLAM

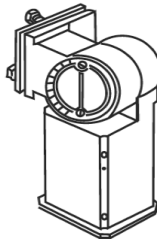
Appearance And Specifications:
•Bronze



SLIP-FITTER

ORDER CODE: SF

Appearance And Specifications:
•Die-cast Aluminum
•Bronze or Custom Color



WALL MOUNT 90 DEGREE BRACKET

ORDER CODE: 90BRK



CUSTOM FIXTURE COLOR

ORDER CODE: COL-[RAL]

Appearance And Specifications:
•Choose a custom color for your fixture.
•RAL color code must be provided.



MARINE GRADE FIXTURE COATING

ORDER CODE: COAT

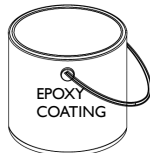
Appearance And Specifications:
•Add a Marine Grade coating to your fixture.
•Coating appearance is green.



EPOXY COATING

ORDER CODE: EPOXY

Appearance And Specifications:
•Add epoxy coating to your fixture.



WHEN APPROVED, THE SPECIFICATIONS OUTLINED IN THIS SPEC SHEET SHALL BECOME THE SPECIFICATION FOR THE MATERIAL TO BE DELIVERED BY NORIBACHI ON THE CITED PROJECT. AN AMENDED SPEC SHEET CAN BE PROVIDED BUT ONLY AFTER WRITTEN APPROVAL BY THE CUSTOMER IS RECEIVED. THIS DOCUMENT IS THE PROPERTY OF NORIBACHI AND CAN ONLY BE USED IN CONNECTION WITH MATERIALS FURNISHED BY NORIBACHI.

©2015



