

AES-HB High Bay

Indoor

The eLucent 320-Watt and 505-Watt High Bays deliver the highest quality of brilliant illumination and performance with over 36,000 lumens. Ideal in warehouse, manufacturing, and larger facilities.



1-10V Dim



Toxin-Free



-40°C - 40°C
Operating



Photocell



Motion
Sensor



5
Year
Warranty



Luminaire	AES-HB	Type
Project		
Product		
Notes		

Features

- Suspension by hook or pendant
- Heavy-duty cast and extrusion aluminum
- Wide beam aluminum reflector



Order Format

Sample: AES-HB320-ATG50K-D

Series	Wattage		CCT		Voltage		Dimming	
AES=High Bay	-	HB320=320W HB505=505W	-	ATG50=5000K	-	Blank=100-277V -V=347-480V	-	D=1-10V Dimming

Application

Suitable for suspension by the means of a chain, cable, or pendant mount. The suspension methods may utilize a hook or single pendant monopoint.

Construction

Constructed in a heavy-duty cast and extrusion aluminum. Luminaire coated in an environmentally friendly polyester powder formulated for a durable and long-lasting color in a silver finish. No toxic heavy metals, VOC, or mercury were used in the design of this product.



Electrical

Luminaire lifespan is rated at 50,000 hours. Standard input voltage is 100-240/277. Luminaire is compatible with most of the 1-10V dimming systems in the market and sensors including: dual function, KO, and backup sensor.

Optics

The highbays are quipped with a wide beam aluminum reflector for maximized light distribution.

Certifications

- DLC Listed
- RoHS
- UL listed
- CE
- Title 24

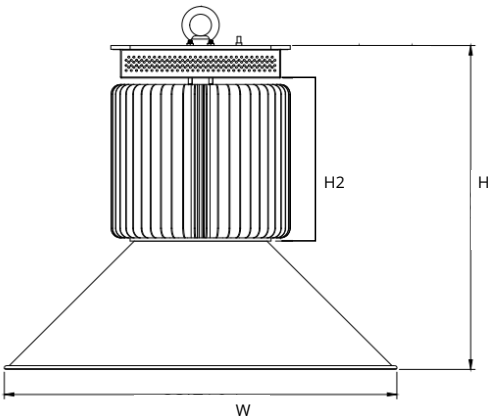
Input Voltage (VAC)	100-277
CRI	70+
CCT(K)	5000
PF	>.95
THD	<10%
L70 (Hours)	58,000
Color	Silver
Housing	Cast & Extrusion Aluminum
Lens Type	Wide Beam Aluminum Reflector
Temperature Range	-40°C to 40°C
Warranty	10 Years

Lumen Data

Wattage (W)	5K	
	Efficacy (Lm/W)	Lumens (Lm)
320W	113	36,000
505W	106	53,600

Dimensions

320W
505W
with shroud

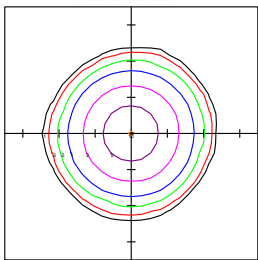


Part No.	Width(W)	Height (H)	Height (H2)
AES-HB320	24.13"	19.96"	12.0"
AES-HB505	26.33"	21.93"	14.0"

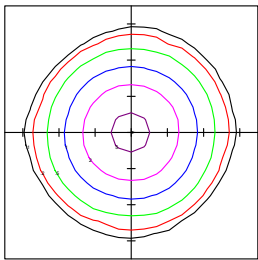
Recorded in inches

Photometric

320W
1000-1500W
Replacement

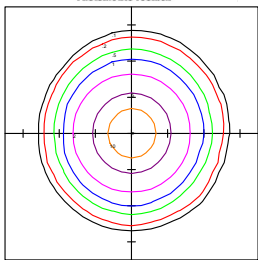


AES-HB320-ATG50K @40'
Replaces 1000+W

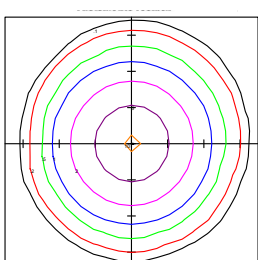


AES-HB320-ATG50K @50'
Replaces 1000+W

505W
1000-1500W
Replacement



AES-HB505-ATG50K @40'
Replaces 1000+W



AES-HB505-ATG50K @50'
Replaces 1000+W