



100W, 150W, and 240W UFO
with Mean Well driver



320W UFO with YG driver

Description

The Waterproof UFO High Bay is the most versatile fixture Altech has produced to date. With an IP67 rating, and capable of mounting on the ground and wall, the HBUFO can do it all.



Applications

Warehouse Lighting
Shopping Centers

Cold Storage
Indoor Arenas

Exhibit Halls
Gymnasiums

Details

IP Rating	IP67
Material	Die Cast Aluminum
Lens	Tempered Glass / Polycarbonate
L70 Life	100,000 Hours
Warranty	10 Years
CRI	83+
Qualification	UL, DLC Prem., FCC, CE, RoHS
Driver Man.	Mean Well and YG
Chip Man.	Philips

Electrical

Power Factor	0.99
Frequency	50/60 Hz
Max THD	15%
Operating Temp.	-40° F to 150° F -40° C to 65° C
Dimming	3 in 1 (Resistance, PWM, 1-10V)

DLC #:	U-UHB-100	U-UHB-150	U-UHB-240	U-UHB-320
MODEL #:	AE-L-HBUFO-100	AE-L-HBUFO-150	AE-L-HBUFO-240	AE-L-HBUFO-320
Input Wattage:	100W	150W	240W	320W
Lumens:	13,300 lm	19,500 lm	31,200 lm	55,360 lm
Equivalent:	400W MH	1000W MH	1500W MH	2000W MH

Ordering Information

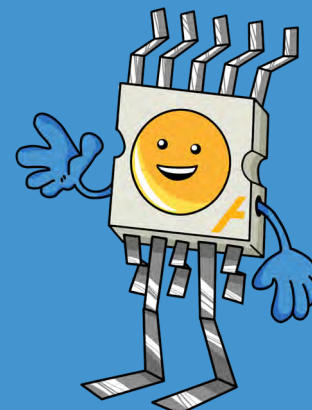
Example: AE-L-HBUFO-CPLY-150-130-50K-1-H-WP(4)-BL

Lens Type	Wtg	Lumen Package	Color Temp.	Distribution	Input Volt.	Mounting	Options	Finish
DTG - Diffused Tempered Glass*	100	130 - 130 lm/W*	30K - 3000K	1 - 120°*	1 - 100-277V*	H - Hook**	MS - Motion Sensor	BL - Black*
	150	165 - 165 lm/W	40K - 4000K	2 - 90°	2 - 480V	Y - Yoke***	TL - Twist Lock Plug	BZ - Bronze
CTG - Clear Tempered Glass	240	185 - 185 lm/W	50K - 5000K*	3 - 60°		P - Pendant	EI - Emergency Inverter	W - White
CPLY - Clear Polycarbonate	320		57K - 5700K			(Pendant type must be specified when ordering)	(X)P - (X)-Pin Twist-Lock Base (X = select one: 3,5, or 7)	GR - Gray
DPLY - Diffused Polycarbonate							WP(X) - Additional Whip (X = specified length in ft.; 4' is standard)	SP - Other

*Standard **Standard on 100W, 150W and 240W ***Standard on 320W

Additional Notes

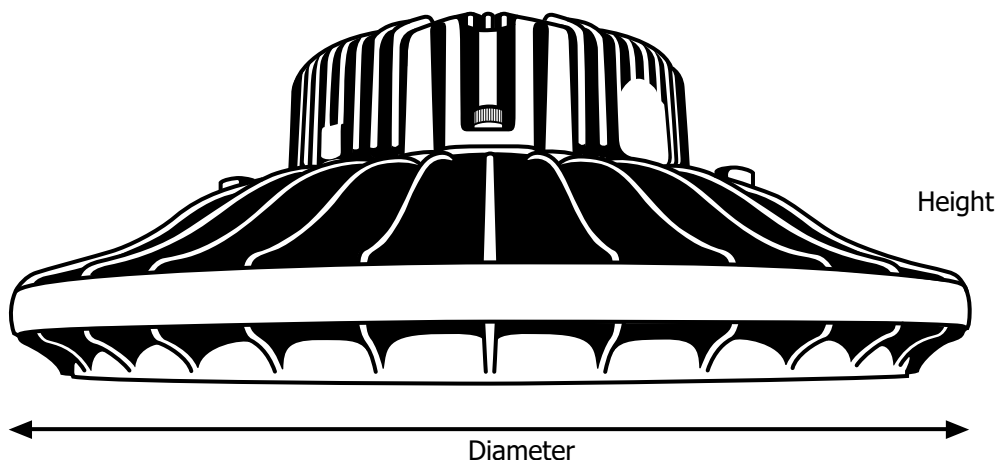
- Only 5000K in BLACK are in stocked locally, check for ETA's
- Step-down dimming motion sensors are for 100-277V models only
- Operating Amperage of 240W at 277V is 0.87A
- Inrush current: cold start 60A
- Hot-start delays: .08 seconds (YG driver), 1 second (Mean Well driver)
- Additional charges apply for items under "Options" column and non-standard colors
- 60° Beam angle available in clear polycarbonate lens only
- 120° Beam angle available in clear polycarbonate and tempered glass lenses only
- Some models of this product may not be qualified as DLC Premium, please check the DLC Qualified Products List at www.designlights.org/QPL to confirm which models are qualified



Lumen Output (based on 5700K)

System Watts	Lumens	lm/W	Lumens	lm/W	Lumens	lm/W
100	13,300	130	16,000	165	18,000	185
150	18,900	130	24,000	165	27,000	185
240	34,230	130	38,400	165	43,200	185
320	41,600	130	51,200	165	57,600	185

Fixture Dimensions and Weight



Fixture Wattage	Diameter	Height	Weight
100W and 150W	13.2 in.	6.7 in.	11.7 lb., 12.6 lb.
	335 mm.	170 mm.	5.3 kg., 5.7 kg.

Weight for 100W and 150W respectively.

Fixture Wattage	Diameter	Height	Weight
240W and 320W	19.9 in.	6.7 in.	19.8 lb., 21.6 lb.
	505 mm.	190 mm.	8.9 kg., 9.8 kg.

Weight for 240W and 320W respectively.

Accessories and Options



Multi-Level Motion Sensor (optional)



Phenix External Emergency Inverter (18470X-3) (optional)



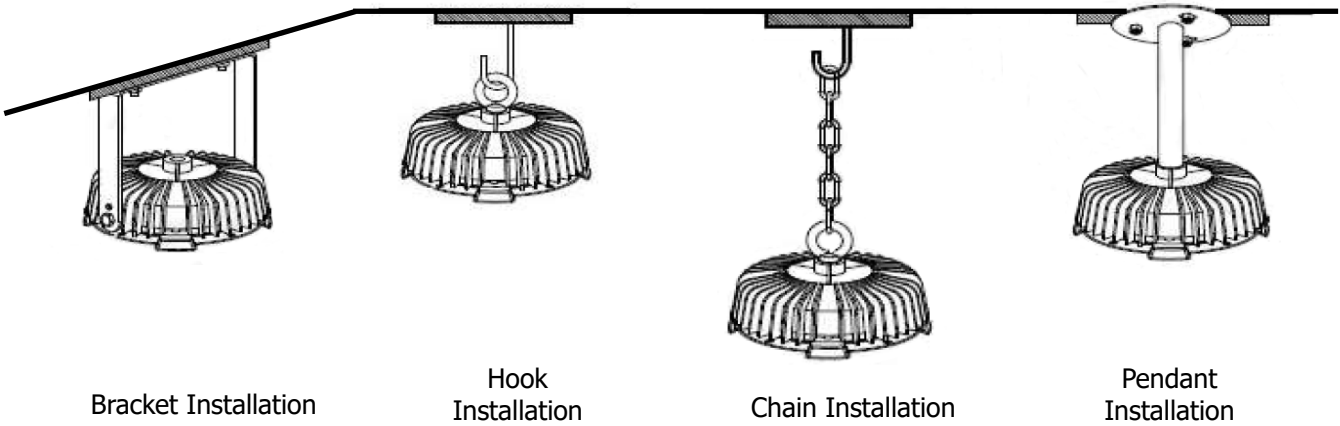
YG Drivers on 60W and 320W UFOs



Opening diameter = 0.75"

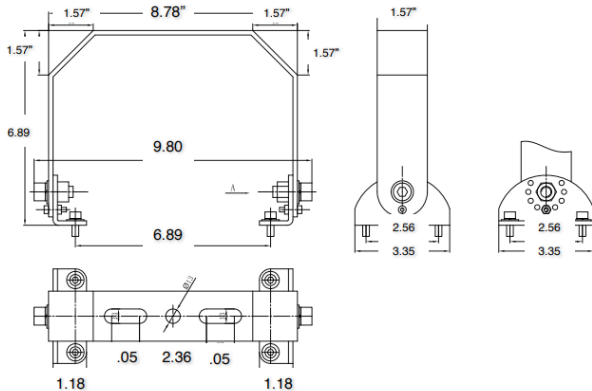
Pendant Adapter (optional)

Mounting Options Supported

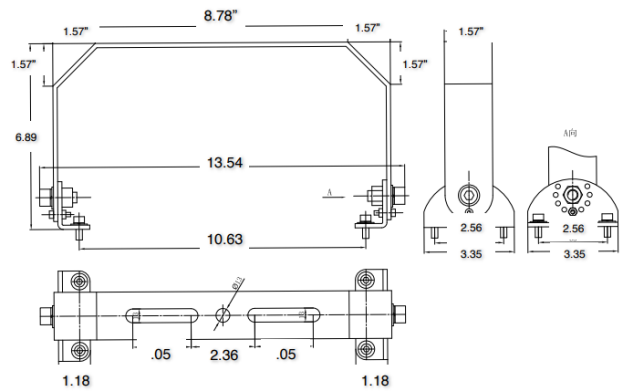


Bracket Dimensions

100 & 150 Watt U-Bracket

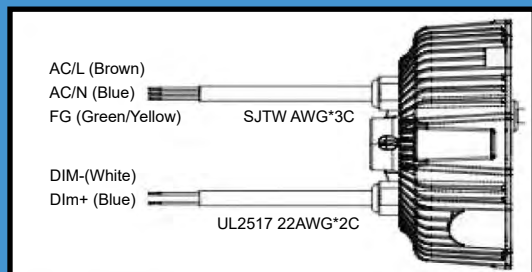


240 & 320 Watt U-Bracket

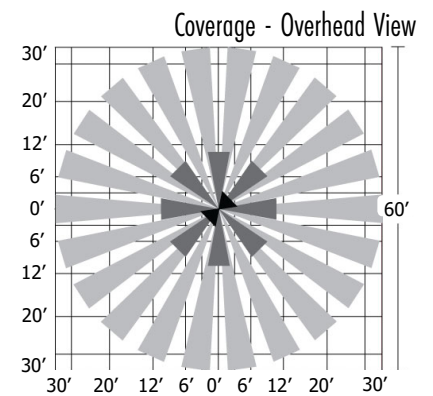
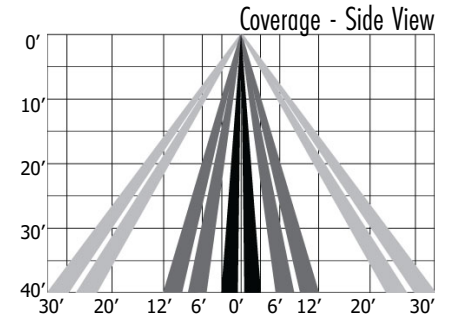
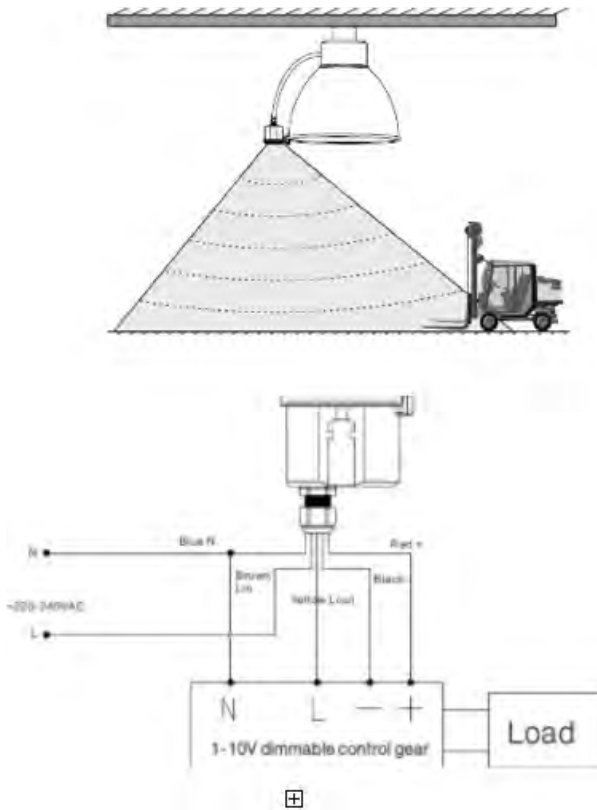


Installation

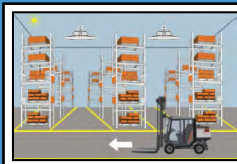
1. Important: Shut the power down.
2. Hang the fixture.
3. Connect the power.



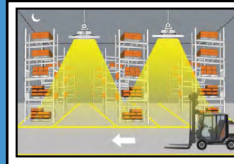
Motion Sensor



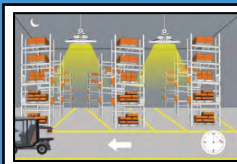
Motion Detection



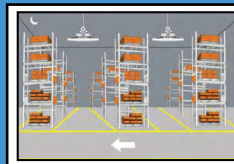
1. With sufficient ambient light, the sensor does not turn the fixture on.



2. With insufficient ambient light, the sensor turns the fixture on when motion is detected.



3. After hold time, the sensor dims the fixture to a low light level if no new motion is detected.



4. After stand-by-period, the sensor turns off the fixture if no motion is detected in its zone.

This 3-Step Dimming/Daylight Sensor, with remote, provides a simple energy-saving solution to use light only when and where you need it. The motion sensor can be mounted at a maximum of 49 feet above the ground and still detect moving objects within as 2,500 square foot area. This sensor also has a daylight sensor for even more added lighting customization and energy savings.