

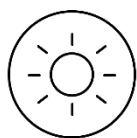


red**dot** winner 2022

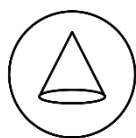


Baron BL02

An ideal LED bollard for entryways, pathways and most pedestrian-scale application that requires unique aesthetics and superior performance



15W/25W



100 lm/w



IP66



IK10

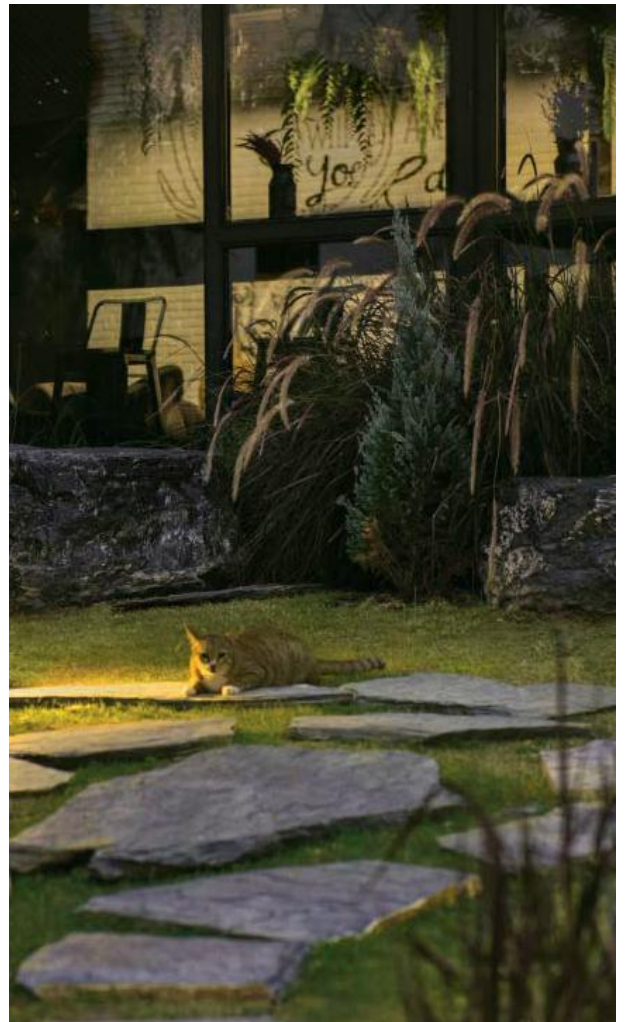
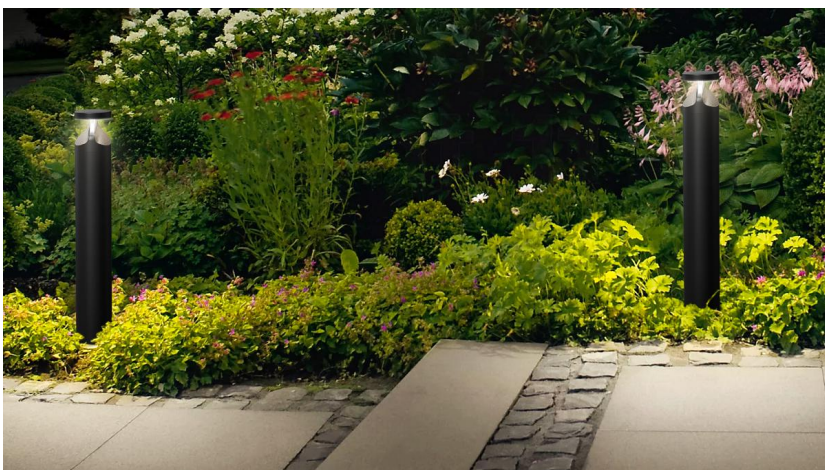
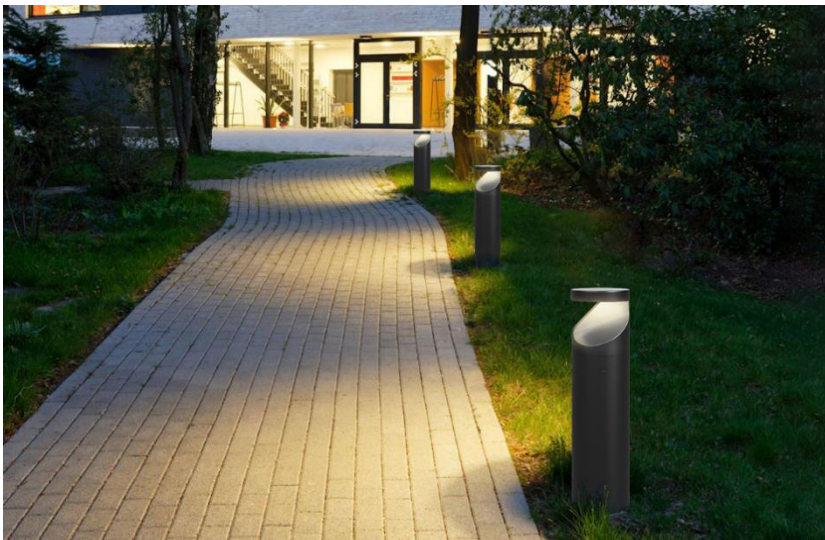
Unique curved design

Not only reveals the beauty of art of light, but also makes full use of the lumen output because no front projection light will be blocked.

- Polished and elegant fixture body
- No screws exposed



This exquisite design together with the robust IK10 die-casting aluminum body and versatile optics systems, makes Baron look like a reliable guardian standing on the ground, drives away the darkness, brings light and safety to your path.



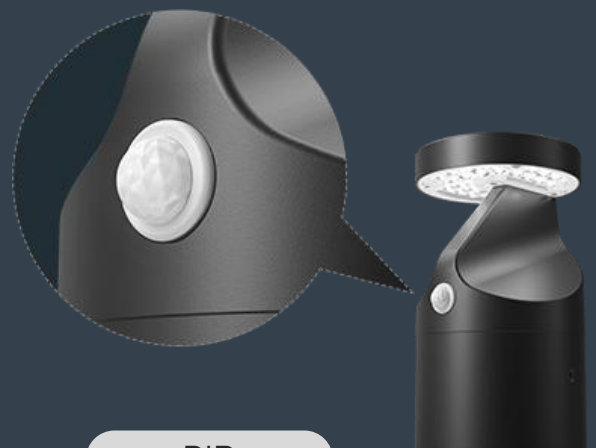


Smart Control

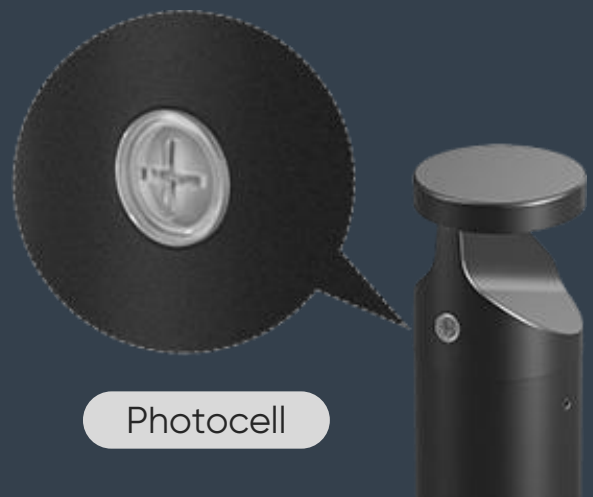
Human-friendly &
Energy saving choice

Photocell , wake up bollard
light smartly by detecting
ambient lux.

PIR sensor, switch on/off and
dimming bollards by detecting
passerby movements.



PIR

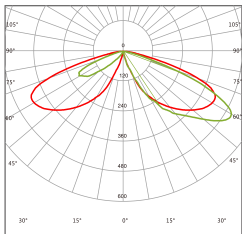


Photocell

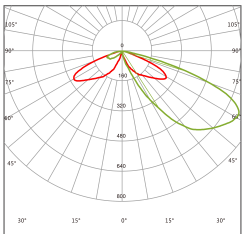
BL02 Product Range

Model No	BL02-015	BL02-025
Power Consumption(±5%)	15W	25W
Input Voltage	220-240VAC, 50 / 60 Hz	
Control	PIR sensor / Photocell / DALI	
Luminous Flux (±10%)	1500lm	2500lm
Efficacy(4000K Ra70)	100lm/W	
CCT & CRI	4000K (3000K, 5000K optional)	
Beam Angle	R02001(Type V), R02002(Type IV)	
Protection Rating	IP66, IK10	
Operating Temperature	-20°C to + 45°C	
Warranty	5 years	

Photometric Diagrams

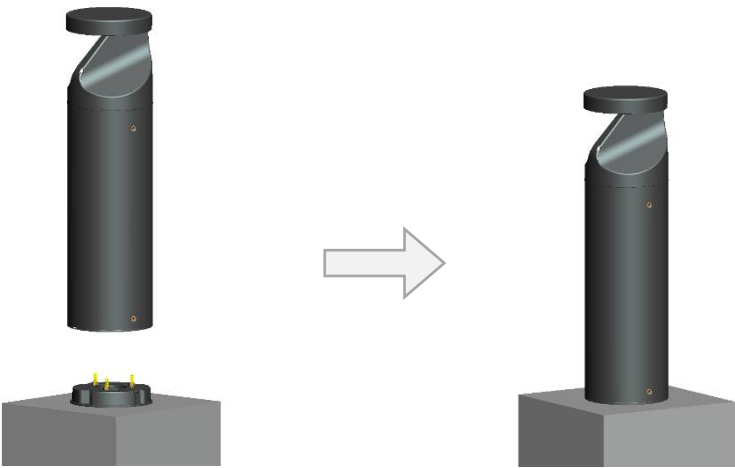


R02001



R02002

Mounting Options



Mounting kit with anchor bolts