

AS Access Area Light

Outdoor



With high efficacy and precision-engineered polycarbonate lenses, the Access Area Light ensures the most energy saved with a wider smoother, and more uniform light output. The lower glare of the Access will be sure to offer improved visual comfort in parking lots and university campuses.



Luminaire	Access Area Light	Type
Project		
Product		
Notes		

Features

- IP65 rated and tested for use in wet locations
- Convenient modular design and knockout
- High-transmittance, prismatic acrylic lens



Order Format

Sample: AS11-50-T3

Series	Wattage	CCT	Voltage	Dimming	Optic	Finish Color
AS=Access Area Light	11=110W 15=150W 30=300W	- 40=4000K 50=5000K	- Blank=100-277V -V=347-480V	- Blank=1-10V Dimming ND=Non-Dimming	- T3= Type III	Blank=Black

Application

Multiple brackets are available for customizable mounting, improving installation time and reducing blind area of visual field. Slipfitter, arm mount, trunnion and yoke are available for the Access.

[See mounting accessories on accessory specs sheet.](#)

Construction

The Access Area Light is precision manufactured from Die-cast aluminum. The luminaire comes with a built-in occupancy sensor, following Title 24 standards.

Catalog #	Description	110W	150W	300W
MSF-AS-00	Slip Fitter for Access Area Light	x	x	x
MAM-AS-05	Square Pole Arm for Access Area Light	x	x	x
MTN-AS-00	Trunnion Mount for Access Area Light	x	x	x
MTN-AS-00	Round Pole Adapter for Access Area Light, 6 inch	x	x	x
MYK-AS-01	Yoke Mount Bracket for 110W/150W Access Area Light	x	x	
MYK-AS-01	Yoke Mount Bracket for 300W Access Area Light			x
SHD-AS-01	Shield for 110W/150W Access Area Light	x	x	
SHD-AS-02	Shield for 300W Access Area Light			x



Electrical

110W, 150W, and 320W models are available, with custom orders up to 1500W upon request. System efficacy is rated up to 170lm/W and lifespan at greater than 50,000 hours. The fixture has the standard input of 100-240/277VAC.

Input Voltage (VAC)	100-240/277
CRI	73+
CCT(K)	3,000 4,000 5,000 5,700
PF	.9
L70 (Hours)	50,000+
Color	Black
Housing	Die Cast Aluminum
Optic Types	T3=Type III T5=Type V
Temperature Range	-40°C to 50°C
Warranty	10 Years

Optics

The Access is available in type III beam angles with type II and V available upon request. Color accuracy is rated at 70+ CRI, in a color temperature of 4000K and 5000K.

Certifications

- DLC Premium
- UL Listed
- CE
- RoHS
- Title 24
- IP65 rated

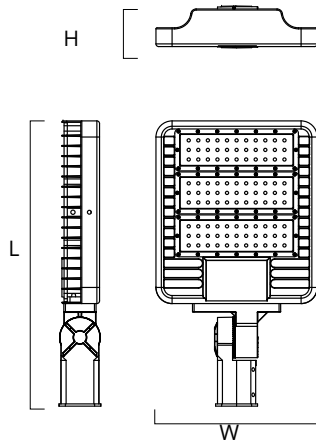
Lumen Data

Catalog Number	Wattage (W)	System Wattage	4K		5K	
			T3		T3	
			Efficacy (Lm/W)	Lumens (Lm)	Efficacy (Lm/W)	Lumens (Lm)
✓ AS11-50-T3	110W	114.5	132	15,181	135	15,412
✓ AS15-50-T3	150W	149.5	132	19,761	134	20,058
✓ AS30-50-T3	300W	313.5	130	41,007	132	41,474
Catalog Number	SPD	Distribution	BUG	EPA	✓ Stock Item ATG Core Product	
AS11-XX	10KV Optional	T2	B3U2G2	2.1		
AS15-XX	10KV Optional	T2	B3U2G3	2.1		
AS30-XX	10KV Optional	T2	B4U3G3	3.2		

Dimensions

**Slipfitter
110W**

150W

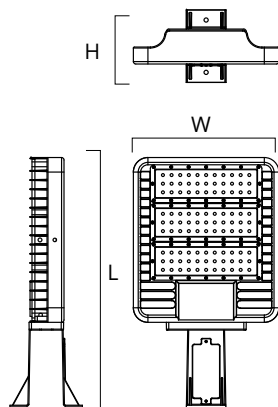


Part No.	Length (L)	Width (W)	Height (H)
AS11	20.9	11.8	3
AS15	20.9	11.8	3

Recorded in inches

**Squaremount
110W**

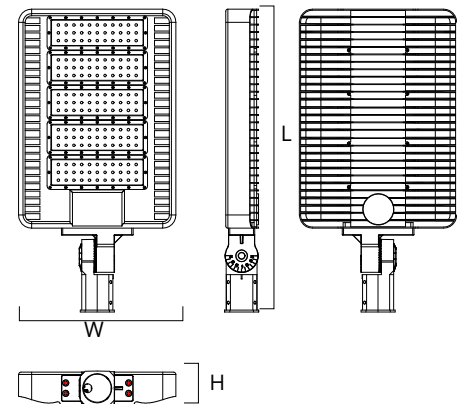
150W



Part No.	Length (L)	Width (W)	Height (H)
AS11	20.5	11.8	5.8
AS15	20.5	11.8	5.8

Recorded in inches

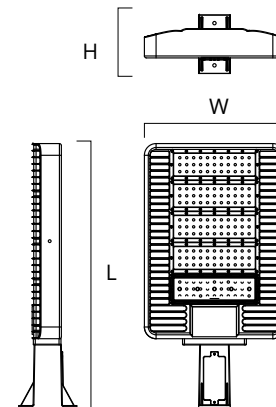
**Slipfitter
300W**



Part No.	Length (L)	Width (W)	Height (H)
AS30	27.2	14.2	3.1

Recorded in inches

**Squaremount
300W**

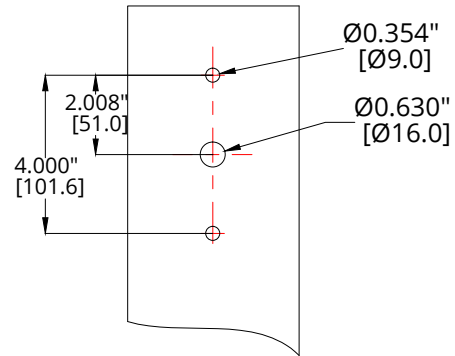


Part No.	Length (L)	Width (W)	Height (H)
AS11	26.7	14.2	5.8

Recorded in inches

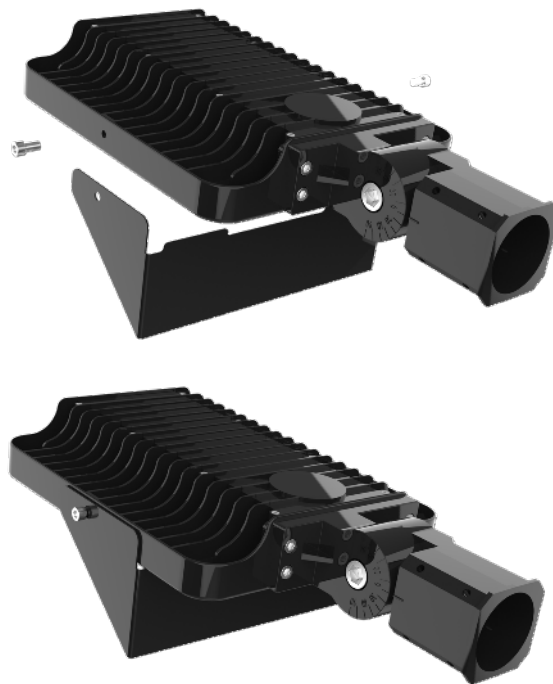
Dimensions

Drilling Detail



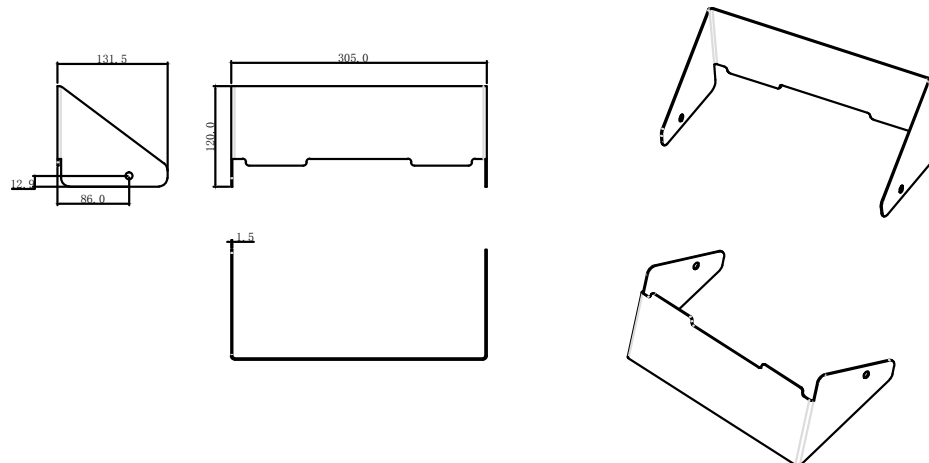
Accessories

Shield



Shield

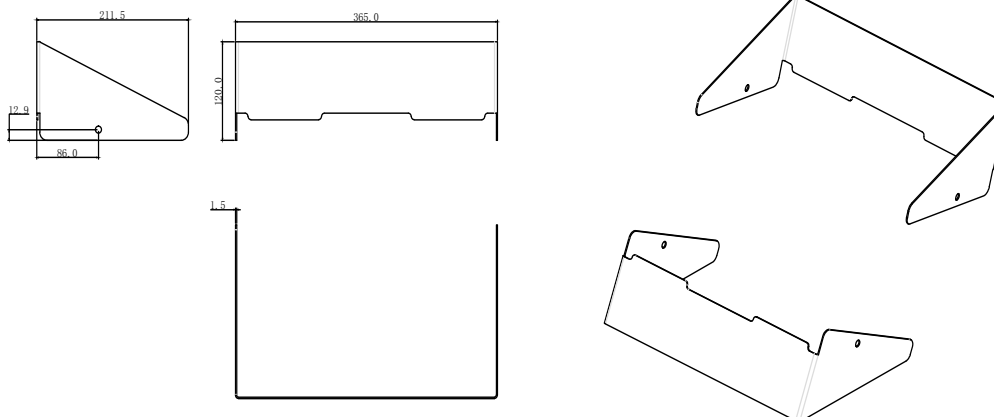
**100W -300W
SHD-AS**



Accessories

Shield

**300W
SHD-AS**

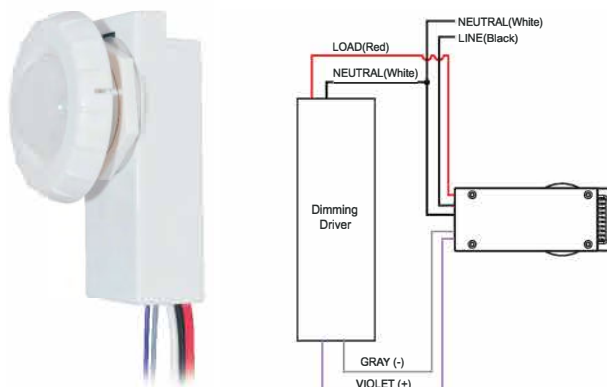


Electrical Accessories

BRI823 Digital PIR Bi- level Sensor



[See sensor specsheet for
more information](#)



Power Supply	120-277VAC 50/60Hz
Maximum Load -40°C-70 °C	Resistive/Tungsten - 600W@120V Ballast Electronic (LED) -800/1200VA@120/277V
Dim Control Output	0-10V, max. 25mA sinking current
Detection Radius/ Angle	30ft@40ft height/360 °
Mounting Height	Max 24ft. @LW1 Max 40ft. @LS2
Remote Range	50ft. (15m) indoor, no backlight
Humidity	Max. 95% RH
Temperature	-40 °C - +70°C

FSP-221B-D* BiLevel Sensor IP66 Rated 110-480V



[*See Sensor Specsheet
for more information](#)

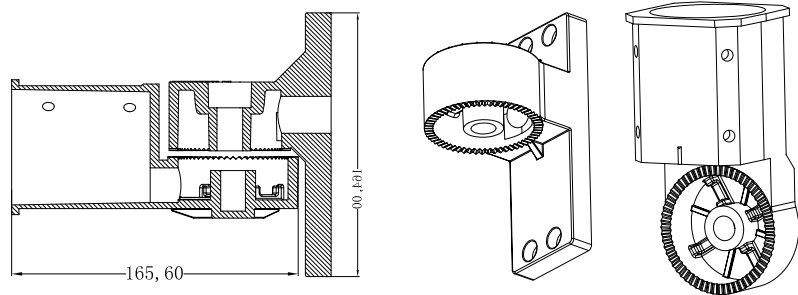


Load Ratings	@120V 0-800W tungsten, ballast, LED driver; 1/6hp motor @230-240V 0-300W ballast, LED driver @277V 0-1200W ballast, LED driver; 1/6hp motor @347/480V 0-1200W ballast, LED driver
0-10V Sinking Current	50mA
High/Low Modes	high:0-10V, low: off, 0-9.8V
Time Delay	30 sec, 1-30 min
Cut Off Delay	none, 1-59 minutes, 1-5 hours
Sensitivity/Service mode	low, med, max: on-fix, off-fix
Setpoints	hold off setpoint: none, 1-250 fc, auto photocell on/off setpoint: 1-250fc
Ramp and Fade Times	1-60 sec
Op Temperature	-40°F to +167°F (-40°C to +75°C)

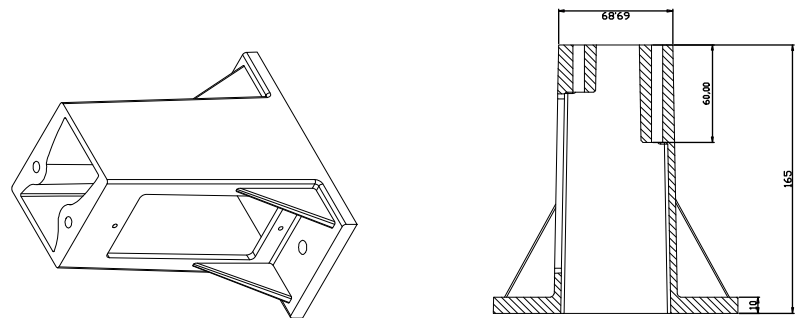
Mounting

[See mounting accessories on accessory specsheet.](#)

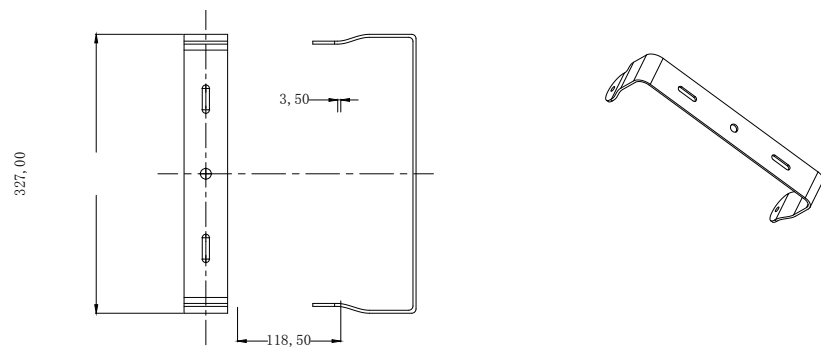
Slipfitter MSF-AS-00



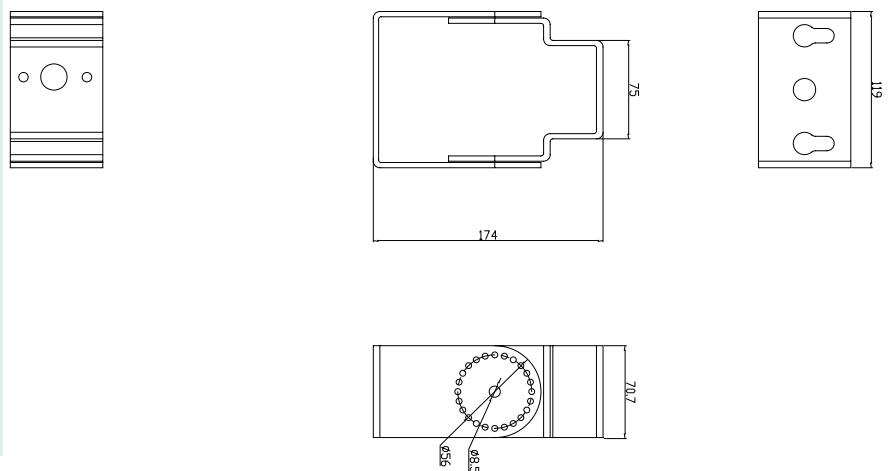
Square Mount MAM-AS-05



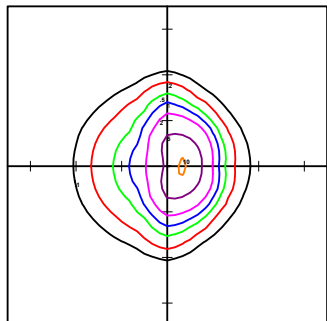
Yoke Mount MYK-AS-01



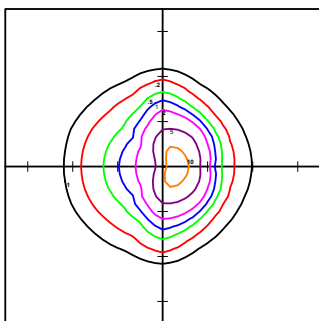
Trunnion Mount MTN-AS-00



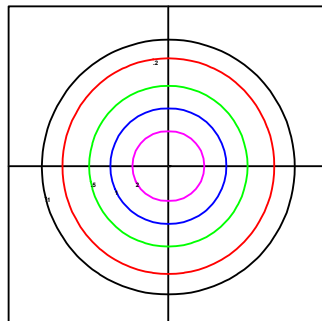
Photometric



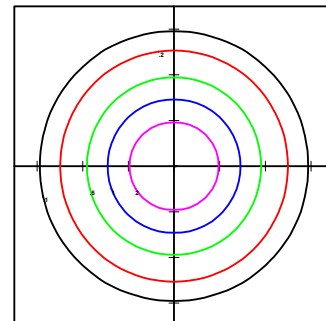
AS11-50-T3 @25'



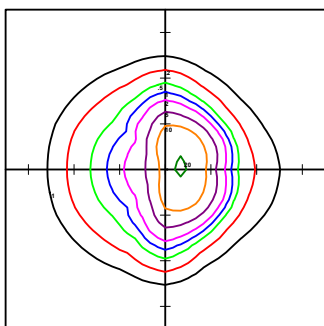
AS15-50-T3 @25'



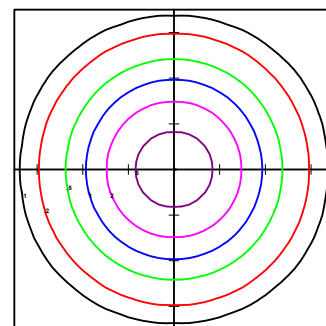
AS11-50-T5 @25'



AS15-50-T5 @25'



AS30-50-T3 @25'



AS30-50-T5 @25'