

# Post Top LED Street Light



## Features

- Power Factor:  $\geq 0.90$
- LED Chip: Philips
- CRI:  $R_a \geq 80$
- Warranty: 5 years
- SDCM  $< 5$
- IK10, IP65
- Material: Aluminum alloy + PC optics lens + Glasses
- Standard color: dark bronze or black
- Working Temperature:  $-40^{\circ}\text{F} \sim 122^{\circ}\text{F}$
- Lifespan(L90):  $> 54000$  hours (@ $T_c = 176^{\circ}\text{F}$ )
- Suitable for 60mm or 76mm round pole,
- Round and square tenon adapter available

## Application

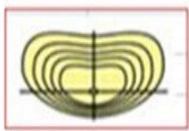
Parking lots , plaza lighting ,shopping mall, garden, roadway ,site & area lighting and general lighting applications.

## Ordering Information

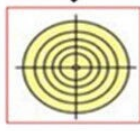
Model	Wattage	CCT	Lumen	Input Voltage	G.W	Carton
YR-TP890-W030	30watt	5000K	3,900lm	100-277Vac	8.5KG	400*400*650mm
YR-TP890-W060	60watt	5000K	7,800lm	100-277Vac	9.0 KG	400*400*650mm
YR-TP890-W120	120watt	5000K	15,600lm	100-277Vac	9.2 KG	400*400*650mm

## Beam Angle

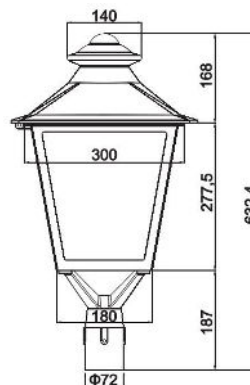
Type III



Type V



## Dimension



## Wall mount bracket



## Different adaptors optional



3inch



4inch



5inch



6inch



4inch



5inch

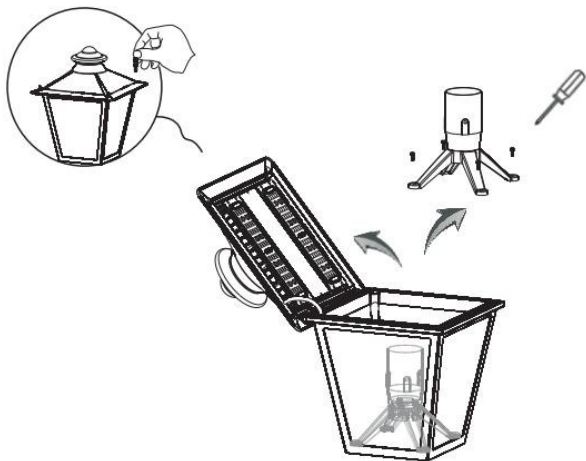


6inch

# Installation

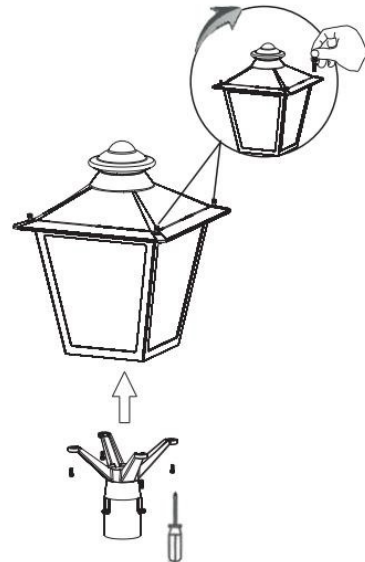
## Step 1:

Use your hand or tools to loosen the 2 screws on the top of the fixture, open the top cover of the fixture, then take out the mount bracket inside the fixture.



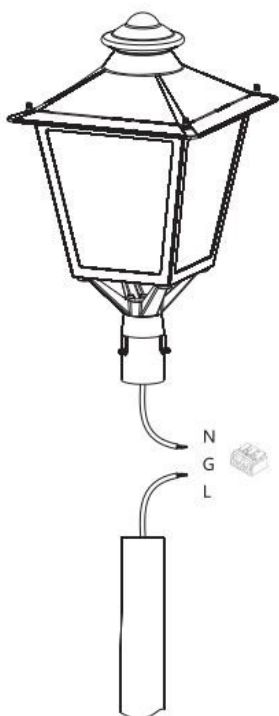
## Step 2:

Close the top cover and fix it with screws. Then use a screw driver to fix the mount bracket to the fixture.



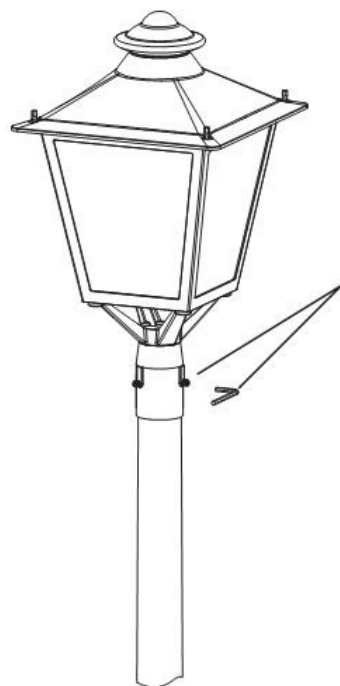
## Step 3:

Wire the cable with the cable in the pole



## Step 4:

Fix fixture onto the 2 3/8 inch or 3 inch pole



**Product Structure**

