



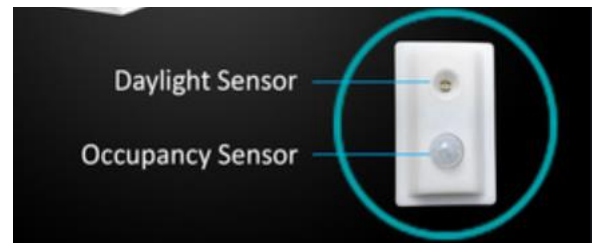
LED Troffer Light

Product Description

LED SION Recessed Troffers 2x2 / 2x4 emits 130lm/w brightness, with ultra thin design, impact resistant acrylic diffuser providing even light distribution, Dims with 0-10 Volt dimmers, High-performance replace 60-130W fluorescent fixtures. Available with sensor.

Advantage

- ETL, DLC approved.
 - Input voltage 120-277VAC.
 - No UV or IR in the beam.
 - Easy to install and operate.
 - Energy saving, long lifespan.
Light is soft and uniform, safe to eyes.
 - Instant start, NO flickering, NO humming.
 - Green and Eco-friendly without mercury.
 - Output constant current lever can be adjusted through output cable with 1-10V.
- *The product can not be connected to a dimming device when it's equipped with Motion Sensor.
Office, classroom, restaurant, waiting room, etc



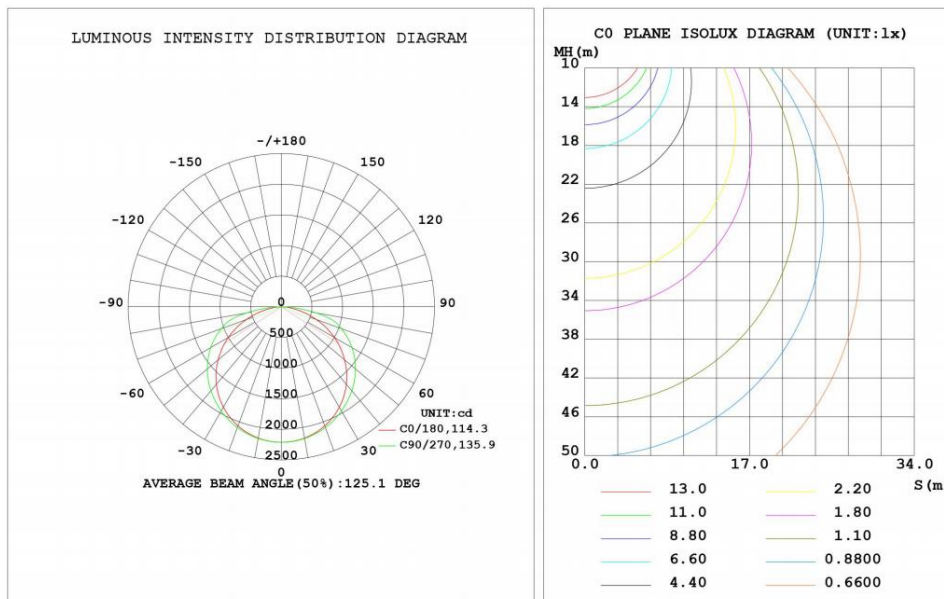


LED Troffer Light

Specifications

Model No.	LS-22TF24W	LS-24TF42W
Input Power	24W	42W
Lumen	3120LM	5460LM
Lumen Efficacy	130LM/W	130LM/W
Color Temperature	3000K, 4000K, 5000K	
CRI	>80	
Viewing Angle	100 Degree	
Input Voltage	120-277VAC 50/60Hz	
PF	≥0.9	
THD	≤20%	
Driver Brand	China brand driver 0-10V DIM	
Optional Accessory	Motion Sensor, PIR Sensor	
LED Brand	Hongli / Mason / Zhongyang	
LED Type	SMD2835	
LED QTY	180 PCS	252 PCS
Housing	Aluminum Alloy	
Housing Color	White	
Waterproof Rating	IP20	
Operating Temperature	-40°C TO 45°C	
Operating Humidity	20%-90% RH	
Storage Temperature	-40°C TO 80°C	
Storage Humidity	10%-95% RH	
Warranty Time	5 Years	

Photometrics





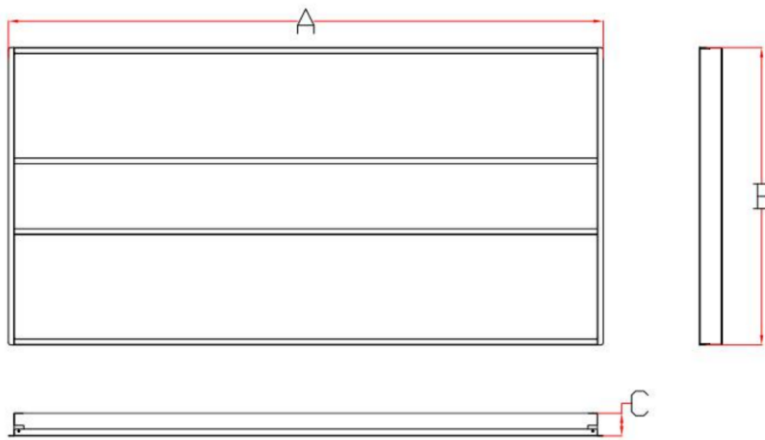
LED Troffer Light

Projected LED Lumen Maintenance

Operating hours	0	25000	50000
Lumen maintenance factor	1	0.91	0.8

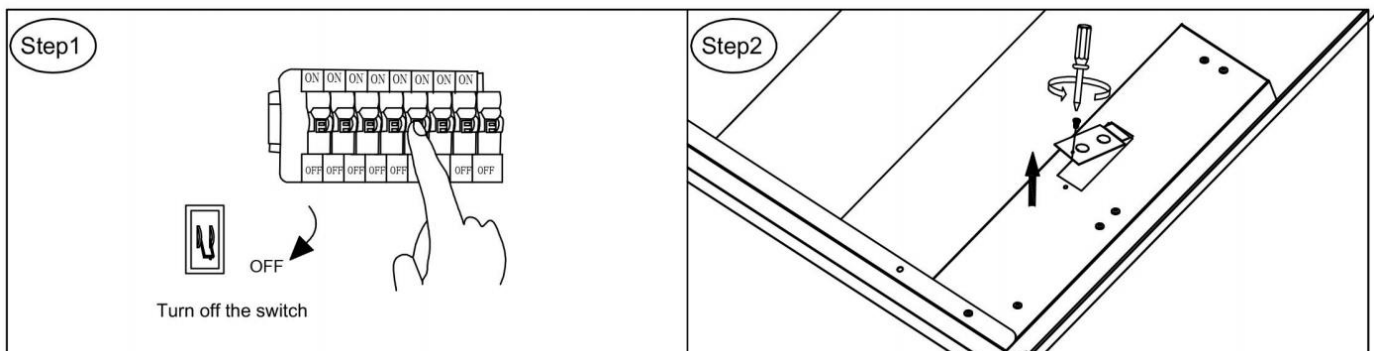
Data references the extrapolated performance projections for the Linear Highbay LED platform in a 25°C ambient, based on 10,000 hours of LED testing (tested per IESNA LM-80-08 and projected per IESNA TM-21-11).

Dimensions(Inch)



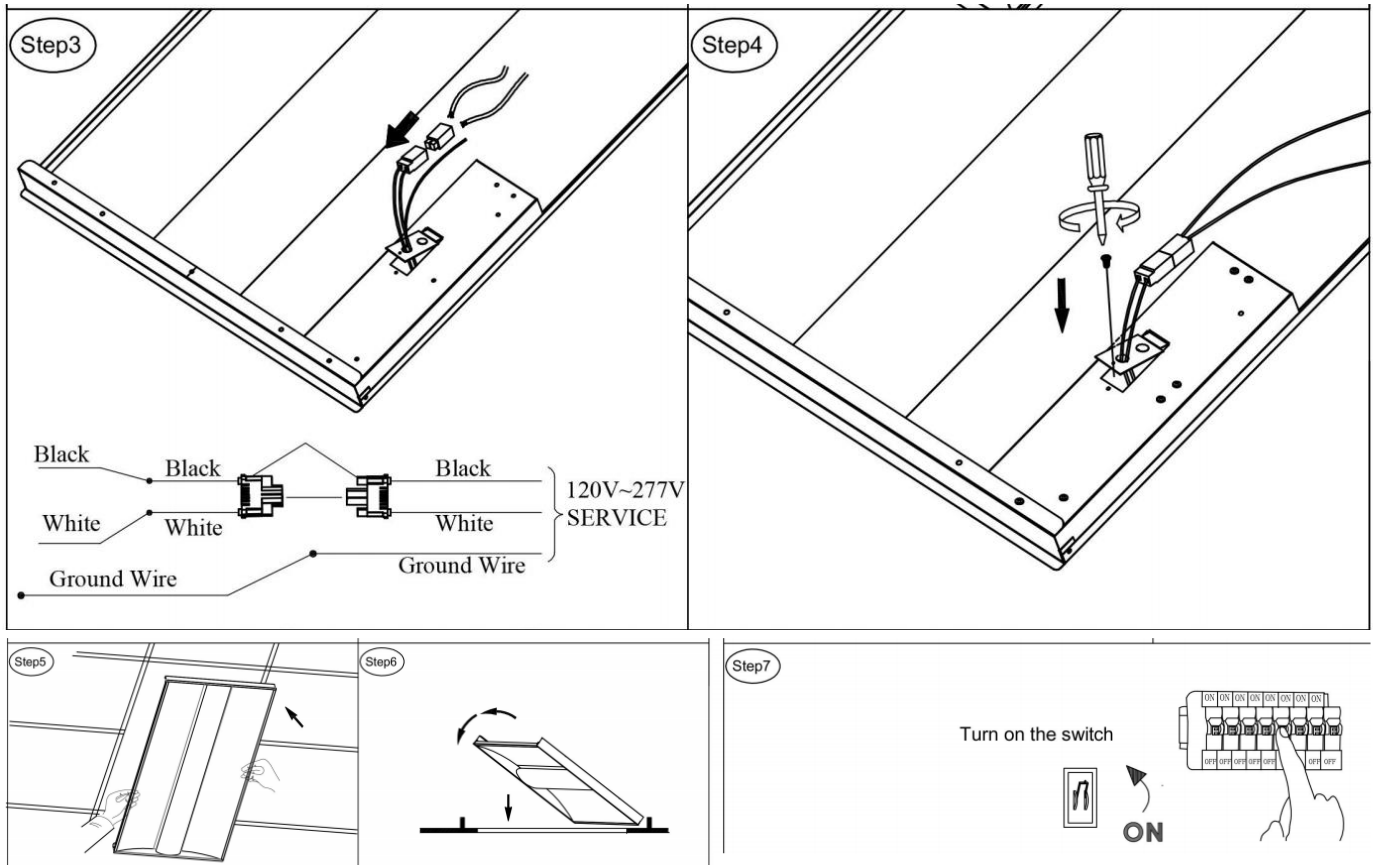
Model	A	B	C
LS-22TF24W	23.8"	23.8"	1.77"
LS-24TF42W	47.6"	23.8"	1.77"

Installation Instruction





LED Troffer Light



Notice For User

Please turn off power before install or change assembly parts.
The input voltage and lamps should be matched, after connecting the power line,
Please make sure the wiring section is insulated.
No-professionals, must not install and disassemble the lamps.

After Sale Service

The product refers to electricians knowledge. Please don't disassemble it by yourself.
If any quality problem happens, please contact the factory for warranty details.
NOTE: Actual performance may differ as a result of end-user environment and application. All values are without notice.