



Description

The VT4S Vapor Tight is designed for low to medium mounting heights. Ideal for applications where dirt, dust, humidity, moisture and cold temperatures are present. Can be pendant or flush mounted.



Applications

Freezers / Coolers
Parking Garage
Toll Booths
Security Lighting
Pathways
Tunnels

Details

IP Rating: IP67
Materials: Aluminum and Polycarbonate
Lens: Frosted Polycarbonate
L70 Life: 70,000 Hours
Warranty: 5 Years
CRI: 80+
Qualification: UL, DLC 4.2, FCC, CE, RoHS
Driver Man.: YG (100-277V), Mean Well (480V)
Chip Man.: Philips

Electrical

Power Factor: 0.99
Frequency: 50/60 Hz
Max THD: 13%
Operating Temp.: -40° F to 130° F
-40° C to 54° C
Dimming: 0-10V

VAPOR TIGHT INDUSTRIAL SERIES

DLC #:	U-VT4-40	U-VT4-60
MODEL #:	AE-L-VT4S-40	AE-L-VT4S-60
Input Wattage:	40W	60W
Lumens:	4,920 lm	6,780 lm
Equivalent:	144W FL	216W FL

Ordering Information

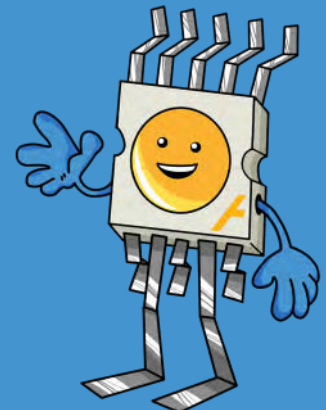
Example: AE-L-VT4S-40-115-50K-1-1-F-WP-GR

Wtg	Lumen Package	Color Temp.	Distribution	Input Voltage	Mounting	Options	Finish
40 60	115 - 115 l/W*	30K - 3000K 40K - 4000K 50K - 5000K* 57K - 5700K	1-220°*	1 - 100-277V* 2 - 480V	F - Flush* P - Pendant**	MS - Motion Sensor EI - Emergency Inverter (X)P - (X)-Pin Twist-Lock Base (X = select one: 3,5, or 7) WP(X) - Additional Whip (X = specified length in ft.; 2.5' is standard)	GR - Gray*

*Standard **Hardware not included

Additional Notes

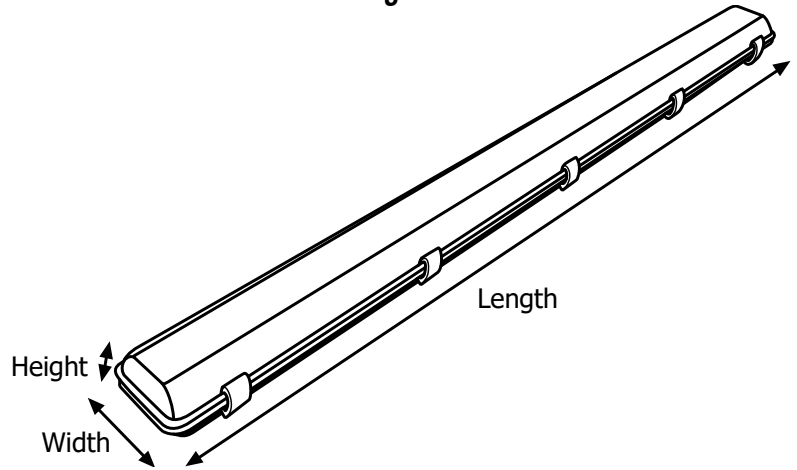
- Only 5000K, 100-277V in GRAY are stocked locally, check for ETA's
- Step-down dimming motion sensors are for 100-277V models only
- Hot-start delays: .08 seconds (YG driver), 1 second (Mean Well driver)
- Additional charges apply for items under "Options" column



Lumen Output

System Watts	CCT	Lumens	lm/W
40	3000K	4,600	115
	3500K	4,680	117
	4000K	4,760	119
	4500K	4,840	121
	5000K	4,920	123
60	3000K	6,300	105
	3500K	6,420	107
	4000K	6,540	109
	4500K	6,660	111
	5000K	6,780	113

Fixture Dimensions and Weight



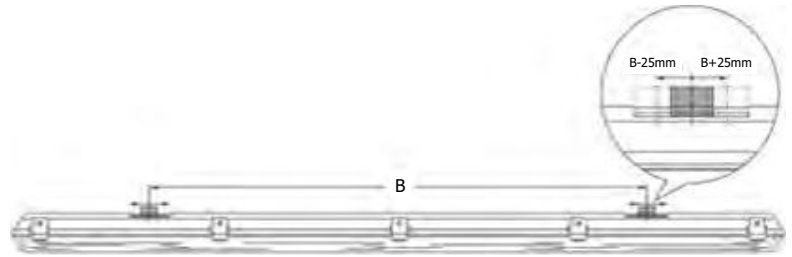
Length	Width	Height	Weight
50 in.	5.8 in.	4.2 in.	5.3 lb.
1,270 mm.	147 mm.	4.2 mm.	2.4 kg.

Mounting

Ceiling Mount



Suspension Mount



Accessories and Options

Phenix Internal Emergency Inverter (18470X-2) (optional)



Multi-Level Motion Sensor (optional)



Universal Stainless Steel Mounting Bracket



Wiring Precaution

The international color scheme is brown (hot), blue (neutral) and green/yellow (ground) wiring. Always disconnect power when installing or troubleshooting. Consult a licensed technician.

