



Description

Altech's Industrial Series Flood Lights are perfect for commercial applications where a low profile, high performance fixture is needed. It can also be installed on any surface.



Not all product variations listed on this page are DLC Premium qualified. To ensure that a specific model is qualified, visit www.designlights.org/search

Applications

Airport Runways
Construction Sites

Loading Docks
Sports Fields

Pathways
Parking Lots

Specs

Efficacy 130 lm/W
Input Voltage 100-277V
Finish Black
Mounting Yoke Mount

Details

IP Rating IP65
Materials Die Cast Aluminum
Lens Glass
L70 Life 100,000 Hours
Warranty 5 Years
CRI 80+
Qualification UL, DLC Premium, FCC, CE, RoHS
Chip Man. Philips
Whip Length (ft) 1.67'

Electrical

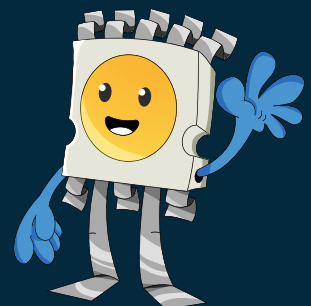
Power Factor 0.99
Frequency 50/60 Hz
Max THD 15%
Operating Temp. -40° F to 130° F
-40° C to 54° C
Dimming 3 in 1 (Resistance, PWM, 0-10V)
Optional for 40W-90W; Standard for 120W-150W

Ordering Information

ORDERING/DLC #:	Wattage	CCT	Lumens	Equivalent
U-IFL-40-30	40W	3000K	4,822 lm	175W MH
U-IFL-40-40	40W	4000K	5,160 lm	175W MH
U-IFL-40-50	40W	5000K	5,320 lm	175W MH
U-IFL-60-30	60W	3000K	7,500 lm	250W MH
U-IFL-60-40	60W	4000K	7,740 lm	250W MH
U-IFL-60-50	60W	5000K	7,980 lm	250W MH
U-IFL-90-30	90W	3000K	10,297 lm	400W MH
U-IFL-90-40	90W	4000K	11,160 lm	400W MH
U-IFL-90-50	90W	5000K	11,520 lm	400W MH
U-IFL-120-30	120W	3000K	15,000 lm	500W MH
U-IFL-120-40	120W	4000K	15,480 lm	500W MH
U-IFL-120-50	120W	5000K	15,960 lm	500W MH
U-IFL-150-30	150W	3000K	18,000 lm	650W MH
U-IFL-150-40	150W	4000K	18,600 lm	650W MH
U-IFL-150-50	150W	5000K	19,200 lm	650W MH

Additional Notes

- 4000K and 5000K, 100-277V are stocked locally, check for ETA's
- Altech Electronics reserves the right to make periodic improvements to our product specs



Accessories and Options



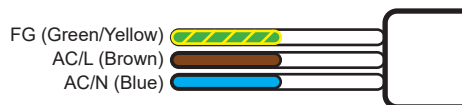
Phenix External Emergency Inverter (18470X-3) (optional)



Compatible with controls and integrations

Installation

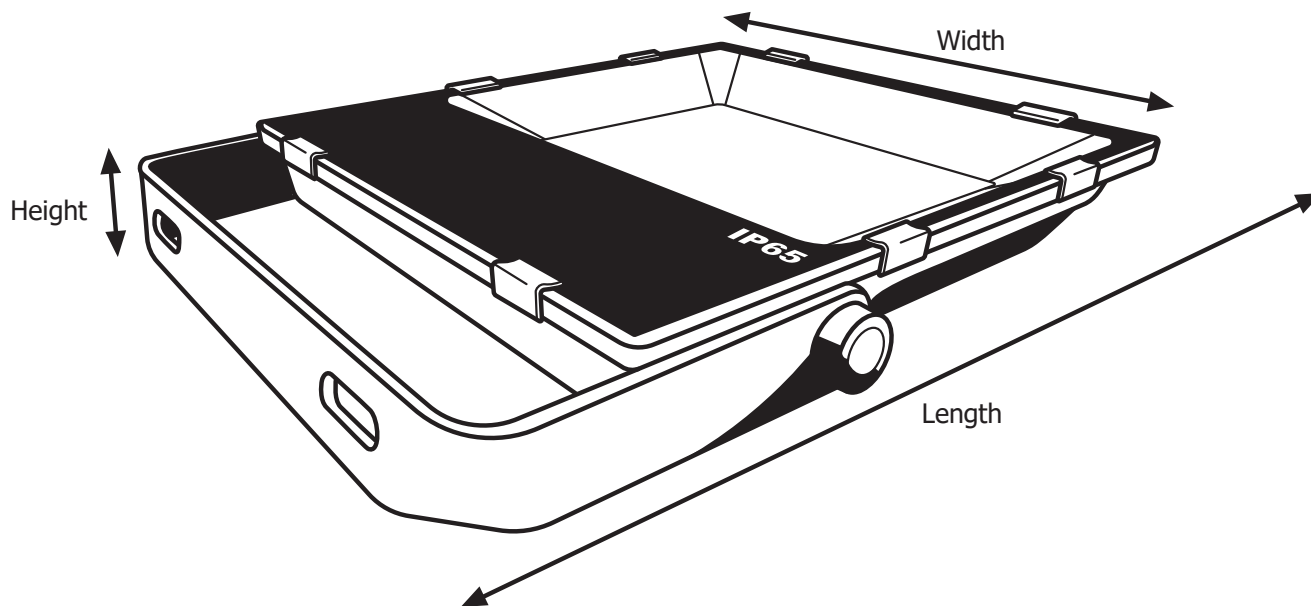
1. Connect the input and ground wires of the fixture to the power supply.
Brown is live. Blue is neutral. Green/Yellow is ground.
2. Secure the luminaire appropriate hardware.
3. Adjust the light direction.
4. Secure at desired angle.
5. Installation Complete



Maintenance

This luminaire is designed to last for years with minimal care. For optimal performance, periodically clean the lens with a mild, non-abrasive glass cleaner and soft cloth. DO NOT use solvents or cleaners containing abrasive agents. When cleaning the luminaire, make sure to have the power turned off and disconnected. Do not spray liquid cleaner directly onto the LED chips, board or wiring.

Fixture Dimensions and Weight



Wattage	Length	Width	Height	Weight
40W	8.9 in.	6.6 in.	1.6 in.	6.6 lb.
	227 mm.	167 mm.	40 mm.	3 kg.
60W	12.2 in.	8.7 in.	1.9 in.	7.7 lb.
	310 mm.	220 mm.	50 mm.	3.5 kg.
90W	13.9 in.	9.6 in.	2.2 in.	11 lb.
	354 mm.	245 mm.	55 mm.	5 kg.
120W	15.8 in.	11.6 in.	2.4 in.	15.4 lb.
	402 mm.	295 mm.	60 mm.	7 kg.
150W	16.9 in.	11.6 in.	2.4 in.	16.5 lb.
	430 mm.	295 mm.	60 mm.	7.5 kg.

LED FLOOD LIGHT INDUSTRIAL SERIES



Exploded View

