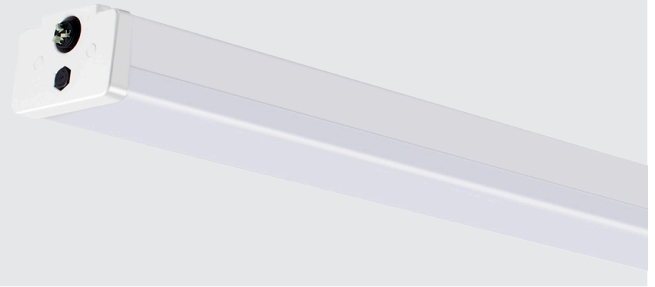


Project Name:	Notes:	Date:	Type:
---------------	--------	-------	-------

DESCRIPTION

The Portor's VTF series is IP66 rated and can be used indoors or outdoors, as it protects against water, dust, and vapor. Comes standard with surface mounting kit.

Ideal use for sports facilities, hospitals, workshops, parking lots, warehouses, and a variety of other locations.



CONSTRUCTION

Excellent optical design, greatly improves the light utilization and evenness. The LED driver is mounted in direct contact with the casting to promote low operating temperature and long life.

ELECTRICAL

Luminaire is built with the highest quality 100-277VAC drivers (custom order available for 347-480VAC driver).

OPTICAL SYSTEM

Designed to reduce glare and improve light distribution through precision formed lens optics.

DIMMING

0-10V dimmable standard

CERTIFICATION

ETL Listed, FCC, RoHS, CE, IP66 Rated

TECHNICAL SPECIFICATION

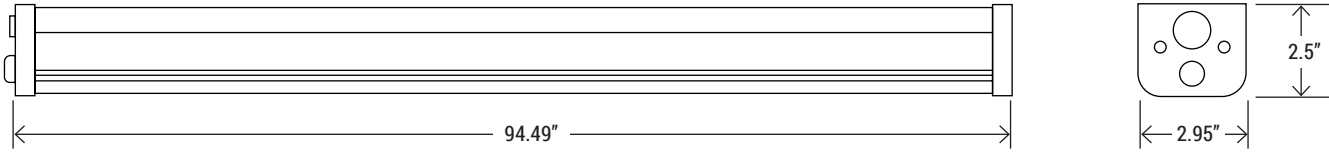
WATTAGE	80W
LUMENS	10,867 lumens
EFFICACY	137 lm/W
VOLTAGE	AC100-277V
POWER FREQUENCY	50/60 Hz
CCT	5000K
CRI	Ra>80
BEAM ANGLE	120°
WORKING TEMP.	-4°F - +122°F
IP RATING	IP66 Wet Location
DIMMABLE	1-10V dimming
POWER FACTOR	>0.9
THD	≤15%
WARRANTY	5 year limited
PORTOR CAT#	PT-VTF-80W-5K



MODEL NUMBER(S)						
MODEL#	WATTS	LUMENS	LM/WATT	CCT	CRI	VOLTAGE
FLT-TPM40-80L24	80W	10,645	135	4000K	>80	AC 100/277V
FLT-TPM50-80L24	80W	10,867	137	5000K	>80	AC 100/277V

Project Name:	Notes:	Date:	Type:
---------------	--------	-------	-------

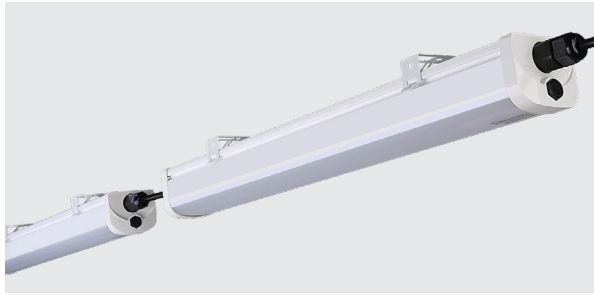
DIMENSION



MOUNTING



Comes standard with surface mounting kit



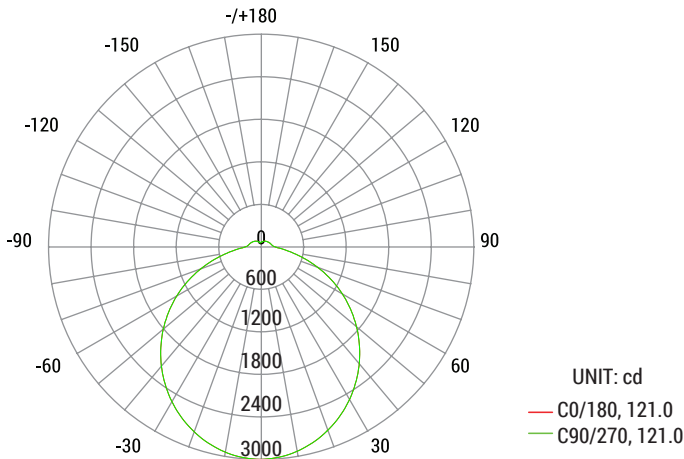
Continuous row mounting

OPTION



Pre-installed Emergency Battery Back-up option available

PHOTOMETRY



Average Beam Angle (50%) : 121.0 degree