



# HA03 Explosion-proof LED Luminaire

HA03 is designed to stand up to the demanding conditions faced in **Class I, Division 1** environments. Rugged materials and design to ensure resistance to extreme environments and tough conditions

30W / 40W / 50W / 60W / 70W



140lm/w



IP66



IK10



-40°C ~ +65°C



Corrosion  
Resistance







## Rugged materials and design

- Body and part of mounting bracket is made of low-copper aluminum alloy, with special anti-corrosion treatment, suitable for marine environment, corrosion-resistant for more than 10 years.
- Factory sealed. External seals not required. IP66 and IK10, Shock-resistant and vibration-resistant solid state luminaires.
- All exposed hardware is stainless steel.
- Glass: tempered glass.

Waterproof test



Dustproof test



Ik10 test



Salt Spray Test



# Key Features



Five wattages  
**30-70W**

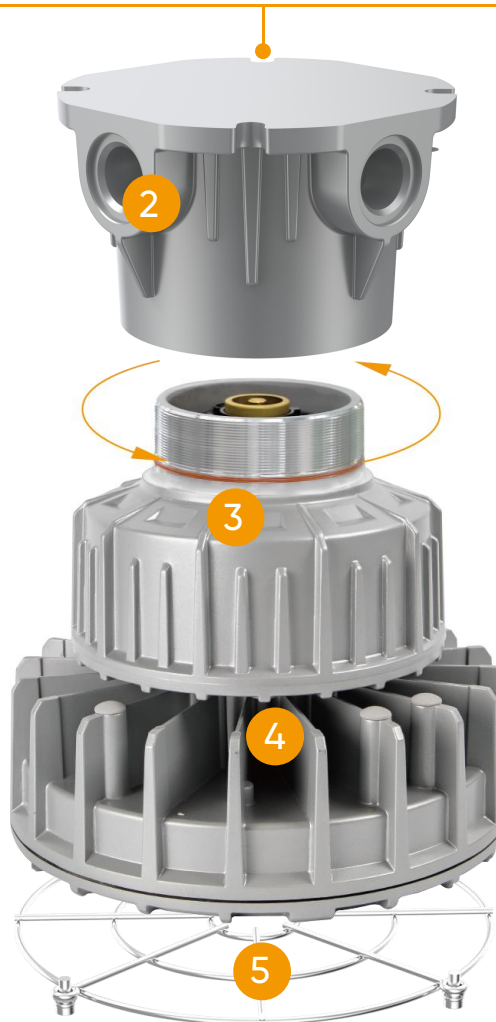
Lumen package  
**4200-9800LM**

HID/MH equivalent  
**Up to 90-240W**

Efficiency up to  
**140LM/W**

Cold and warm white  
**2000-6500K**  
**R/G/B/Amber**

Voltage  
**100-277 or 277-480Vac**



- 1 Pendant, ceiling, wall, 25° stanchion, and trunnion mounting options
- 2 Ceiling mount and wall bracket are equipped with multiple conduit holes(cable entry holes), which can realize the interconnection of fixtures, greatly facilitates on-site installation and wiring.
- 3 Quick connection design, the installation wiring module is connected with the fixture thread, more convenient and faster installation.
- 4 Separate volumes for the led module and the driver bring optimal thermal management.
- 5 Optional stainless steel wire guard.





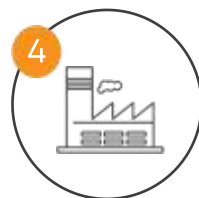
Chemical



Oil, Gas, and Petrochemical



Foundries



Pulp and Paper



Power Generation



Waste and sewage treatment



Manufacturing

### Probability of hazardous material

Division 1	Division 2
Explosive atmosphere is continually or likely present	Explosive atmosphere is not likely present.

### Nature of hazardous material

#### Class I - Gases & Vapors

GROUP A | Acetylene

GROUP B | Hydrogen

GROUP C | Ethylene

GROUP D | Propane

#### Class II - Dust

GROUP E | Metal Dusts

GROUP F | Carbon-based Dusts

GROUP G | Non-conductive Dusts

#### Class III - Fibers & Flyings

# Certifications and compliances

## NEC/CEC

- Class I, Division 1, Groups B, C, D
- Class I, Division 2, Group A, B, C, D
- Class II, Division 1, Group E, F, G
- Class II, Division 2, Groups F, G
- Class III
- Suitable for Use in Wet Locations
- Suitable for Marine locations
- NEMA 4X IP66

## UL standards

- UL 1598
- UL 1598A
- UL 8750
- UL 844

## CSA standards

- CSA C22.2 No. 137
- CSA C22.2 No. 250.0

# Ordering information

## Model Description

HA 03-XXX-X-XX-XXX-XX-X-XX

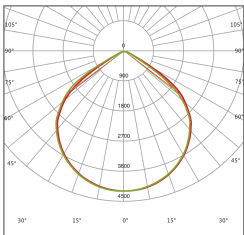
- Options: WG=Wire Guard.
- Mounting Style: C=Ceiling mount; P=Pendant mount.
- W=Wall bracket; S=25° Stanchion mount; T=Trunnion mount.
- Diffusion Material: CG=Clear Glass.
- Beam Distribution: 000=120°.
- CCT(K): 20=2000; .. ; 65=6500; Re=Red; Gr=Green; Bl=Blue; Am=Amber.
- Voltage: U=100-277Vac,50/60Hz; V=277-480Vac,50/60Hz.
- Lamp Wattage: 030=30W; 040=40W; 050=50W; 060=60W; 070=70W.
- Lamp Code: 03.
- Series Constant: HA-Hazardous.

Item	Product Model	Input Voltage	Rated Power	Tamb	T-Code	
					C1D1 GRP.B,C,D C1D2 GRP.A,B,C,D	CII. GRP.E,F,G CIII
1	HA03-030 series	100-277Vac 277-480Vac	30W	-40°C to + 65°C	T6	T5
2	HA03-040 series	100-277Vac	40W	-40°C to + 65°C	T6	T5
3	HA03-050 series	100-277Vac	50W	-40°C to + 65°C	T6	T5
4	HA03-060 series	100-277Vac 277-480Vac	60W	-40°C to + 65°C -40°C to + 60°C	T5 T6	T5
5	HA03-070 series	100-277Vac	70W	-40°C to + 65°C -40°C to + 60°C	T5 T6	T5

# Product Range

Model No	HA03-030	HA03-040	HA03-050	HA03-060	HA03-070
Power Consumption(±5%)	30W	40W	50W	60W	70W
Input Voltage	100-277Vac / 277-480Vac, 50 / 60 Hz				
Luminous Flux (±10%)	4200lm	5600lm	7000lm	8400lm	9800lm
Efficacy (5000K Ra70)	140LM/W				
CCT & CRI	5000K (2000K,2200K,2500K,2700K,3000K,3500K,4000K ,4500K,5700K,6500Koptional)/Red,Green,Blue,Amber Ra70/Ra80/Ra90				
Beam Angle	120°				
Product Dimension	Ceiling mount: Φ248x274mm (Dia.9.8" x10.8"), 25° Stanchion mount: 320 x248x275mm (12.6"x9.8 "x10.8" ) Wall bracket: 336x248x271mm (13.2"x9.8"x10.7") Pendant mount: Φ248x292mm (Dia.9.8" x11.5") Trunnion mount: 284x248x348mm (11.2"x9.8"x13.7")				
Luminaire Net Weight (±0.3kg/±0.66Lbs)	Ceiling mount: 8.3kg(18.26Lbs) 25° Stanchion mount: 7.9kg(17.38Lbs) Wall bracket: 9kg(19.8Lbs), Pendant mount: 7.3kg(16.06Lbs) Trunnion mount: 9kg(19.8Lbs)				
Power Factor	>0.90				
Operating Temperature	-40°C to + 65°C (-40°F to +149°F)				
Protection Rating	IP66,IK10				
Warranty	5 Years				

## Photometric Diagrams



T00C04

## Mounting Options



Pendant mount



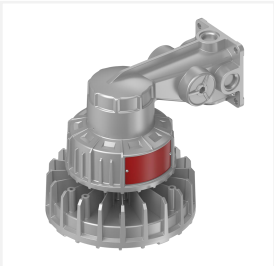
Ceiling mount



25° Stanchion mout



Trunnion mount



Wall mount