



Explosion Proof Light

STA Series



Industrial Field & Hazardous Locations

VENAS

Applications

Oil and Gas industry

- All petroleum production and refining
- Petroleum loading and transportation
- Petroleum storage and retail
- LNG industry

- All mining operations and service

Chemical industry

- All types of paint facilities
- Chemical production and storage

Ocean, marine and aerospace field

- Ocean platform operation facilities and structure
- Aerospace clean room and production
- Ocean vessel operations

Metal treatment

- Steel and aluminum factories
- Pumping stations in any environment
- Metal smelting, foundry and fabrication

Food and alcohol industry

- Flour and fine particle production and storage
- Food and distilling production
- Alcohol industry

Other high humidity, high dust,
high temperature, vapor locations



Description:

STA Series is an explosion proof street light, mainly used as factory or road lighting.

It's suitable for explosive hazardous environments such as petroleum extraction, storage, chemical industry, medicine, military industry and military facilities.

It is waterproof and dust-proof, without internal cleaning and maintenance.

The lamp is made of explosion-proof joint surface; beautiful appearance, simple structure and easy installation, it will never corrode and rust in damp, high temperature and other harsh environments.

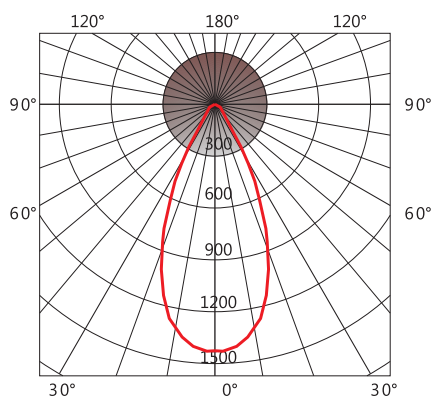
Specification:

Model	EX-xxxW-STA1	EX-xxxW-STA2	EX-xxxW-STA3
Wattage	10~300W	10~200W	
UL844 Standard	Class I,Division 2 Groups A, B, C, D Class II,Division1 Groups E, F, G Class II,Division 2 Groups F, G Class III		
ATEX & IECEX Standard	II2 G Ex eb mb IIC T5/T6 Gb II2 D Ex tb op is IIIC T95/80°C Db		
Housing Material	Aluminum + Tempered Glass		
Voltage	100-305VAC or 180-525VAC		
Lumen Efficiency	120-140 LM/W		
CCT	2700- 7000K		
CRI	□70		
Beam Angle	TypeIII 10-120 degrees		
Operation Temperature	-40°C to 60°C		
IP Rating	IP66/ IP67		
IK	10		
Dimming	0-10V		

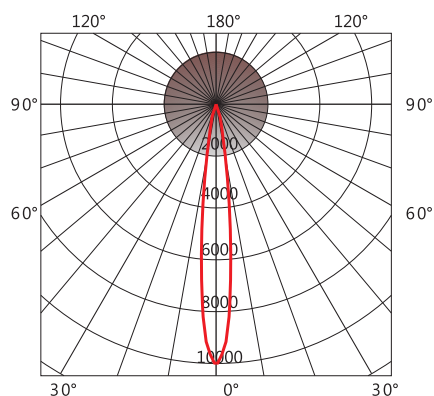
Ordering Information:

EX	/	xxW	/	STAx	/	Y	/	Z	/	D	/	G
Explosion Proof		Wattage		Product Series		Sensitivity options		Color		Beam Angel		Glass Type

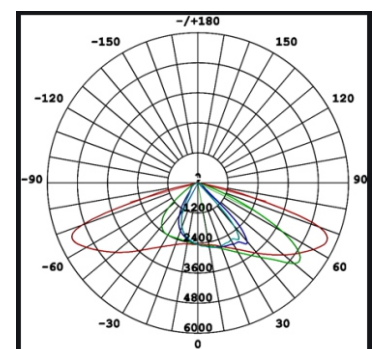
Photometric Data:



Ratio of distance to height:0.7



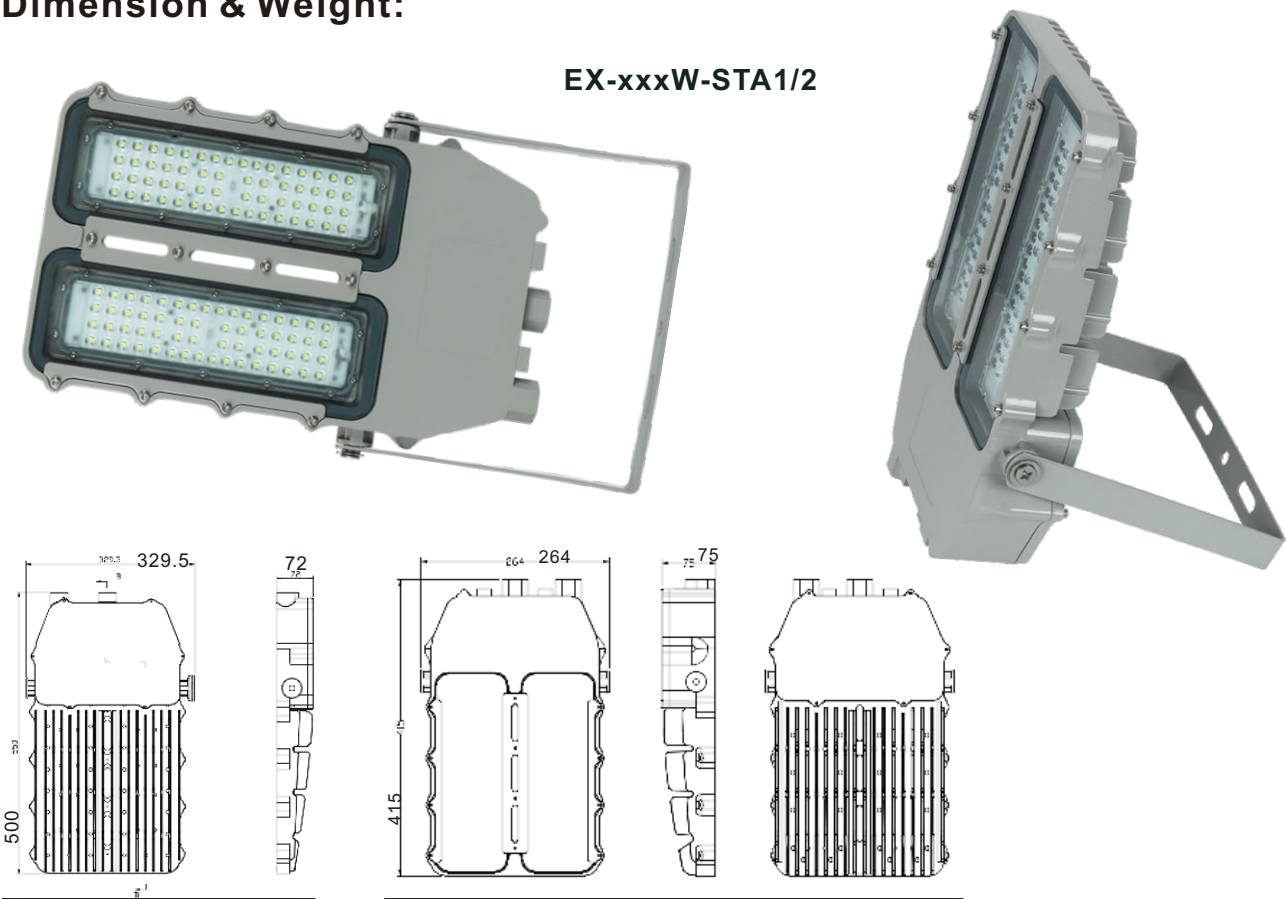
Ratio of distance to height:0.23



Type III

Dimension & Weight:

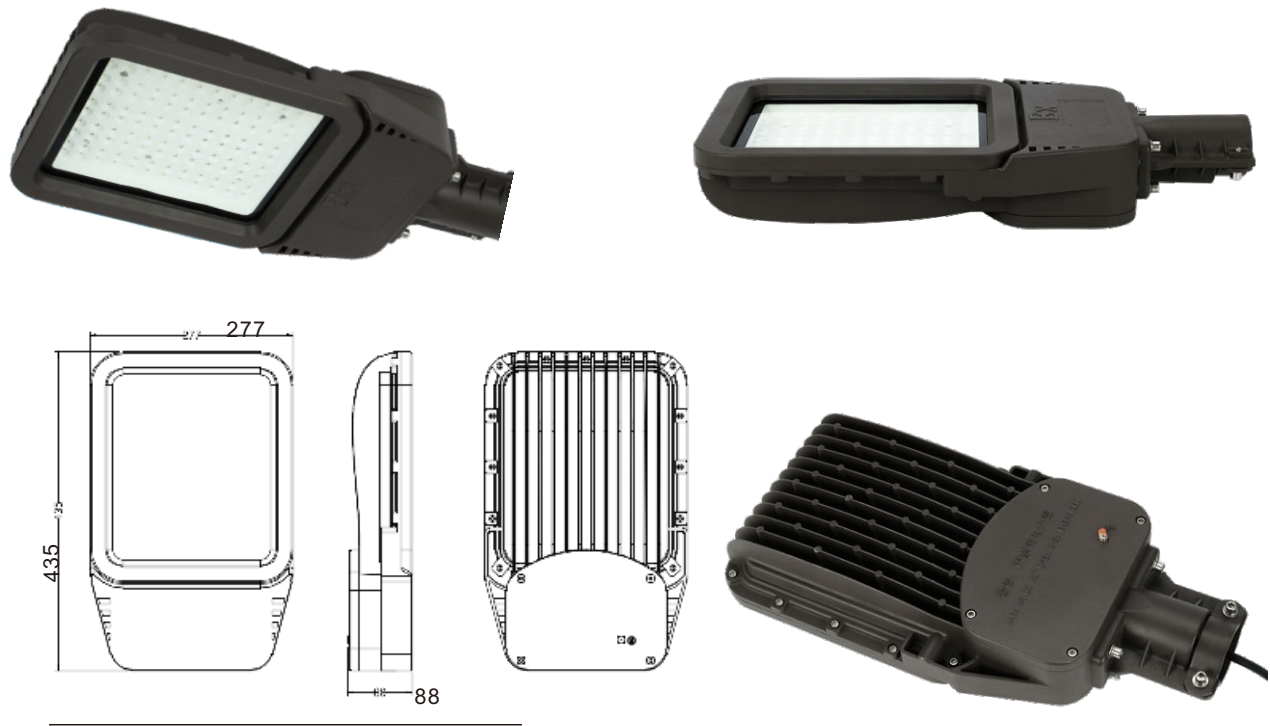
EX-xxxW-STA1/2



STA1
N.W=8 KG
G.W=9 KG

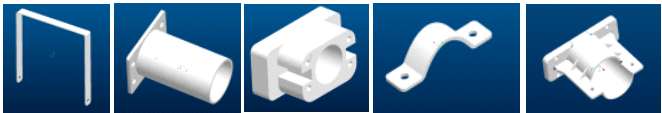
STA2
N.W=5.6 KG
G.W=6.6 KG

EX-xxxW-STA3



STA3
N.W=7.3 KG
G.W=8.3 KG

Accessories & Mounting Kit:



a

b

c

d

e



f



g



h



i

a. Hardware mounting bracket
b. Light pole mounting bracket
c. Adapter bracket
d. Hoop

e. Light pole mounting bracket
f. Trunnion mounting kit
g. Slip fitter mounting kit
h. Arm mounting kit

i. Adjusted arm mounting kit

