



LED LIGHTING SOLUTIONS

Revolutionary Concept For Shipboard Lighting

LLS360® HAZARDOUS LED FIXTURE

CLASS I, DIVISION 2



LISTINGS

UL844 Class I, Division 2 Groups A, B, C & D

ABS

UL1598 Wet/Damp

UL1598A Marine Outside

UL1598A Marine Inside

UL8750 LED Lighting

IP66

T4A or Better

WATTAGE, VOLTAGE AND LUMENS

25Watt	120/277VAC	3,500 Lm
35Watt	120/277VAC	5,075 Lm
47Watt	120/277VAC	6,650 Lm
38Watt	347/480VAC	3,500 Lm
47Watt	347/480VAC	5,075 Lm
55Watt	347/480VAC	6,650 Lm

SPECIFICATIONS

Weight: Less than 8lbs

Dimensions: 11.5 x 13.1875 x 5.075

CCT: 4000K or 5000K Available

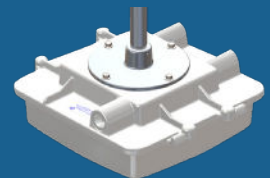
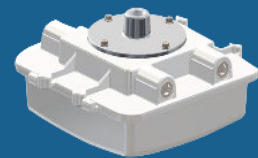
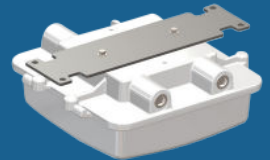
Voltage: 120/277 or 347/480VAC

Housing: Die-Cast Aluminum

Fasteners: Stainless Steel

Lens: Acrylic

Warranty: 5 Years









LED LIGHTING SOLUTIONS

Revolutionary Concept For Shipboard Lighting

LLS360 FIXTURE CONFIGURATIONS

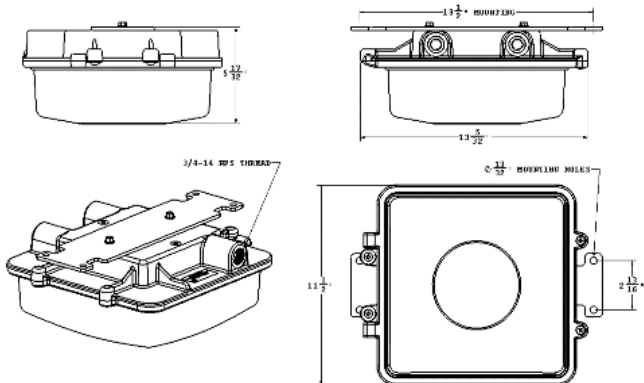
LLS360- _____ - _____ - _____ - _____			
			
			
25	25 Watt (LV Only)	40	4000K
35	35 Watt (LV Only)	50	5000K
38	38 Watt (HV Only)		
47	47 Watt (LV & HV)		
55	55 Watt (HV Only)		
LV	120/277VAC	VM	Vessel Mount
HV	347/480VAC	PM	Pendant Mount

CONFIGURATION EXAMPLE

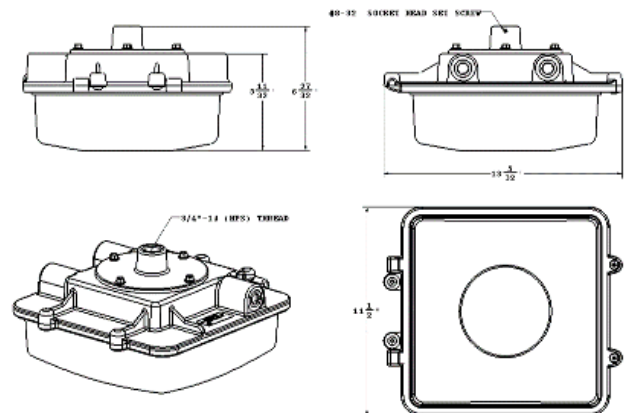
Part No. LLS360-47-40-HV-VM

Description LLS360 LED Fixture, 47Watt, 4000K, 347/480VAC, Vessel Mount

VESSEL MOUNT



PENDANT MOUNT



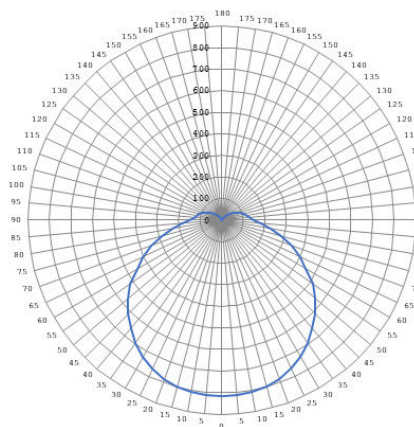


LED LIGHTING SOLUTIONS

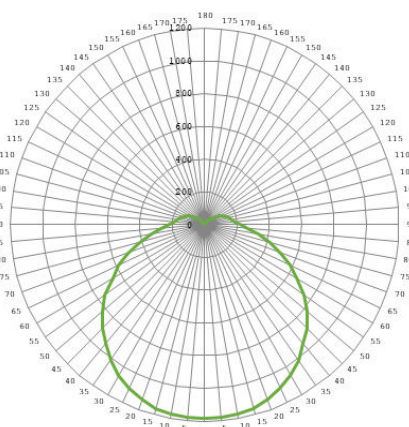
Revolutionary Concept For Shipboard Lighting

REPLACEMENT PARTS

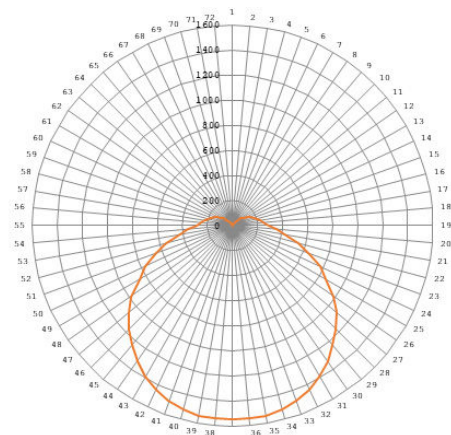
PART NO.	DESCRIPTION
W-100M	LLS360 Cover Window
MNT-009-00	Vessel Mount, HAZLOC, LLS360
TBD	Pendant Mount, HAZLOC, LLS360
LLS-PC-0018-00	LED Array, White, HAZLOC, LLS360
D-H360-01-25	LED Driver, 25Watt, 700mA, HAZLOC, LLS360
D-H360-01-40	LED Driver, 40Watt, 1050mA, HAZLOC, LLS360
D-H360-02-40	LED Driver, 40Watt, 1400mA, HAZLOC, LLS360
TRF-H01-01	Transformer 35VA, 480VAC
TRF-H01-02	Transformer 75VA, 480VAC



LLS360-25-40-LV-XX



LLS360-35-40-LV-XX



LLS360-47-40-LV-XX