



ALL-IN-ONE SOLAR LED FLOOD LIGHT SPECIFICATION



RoHS



IP66

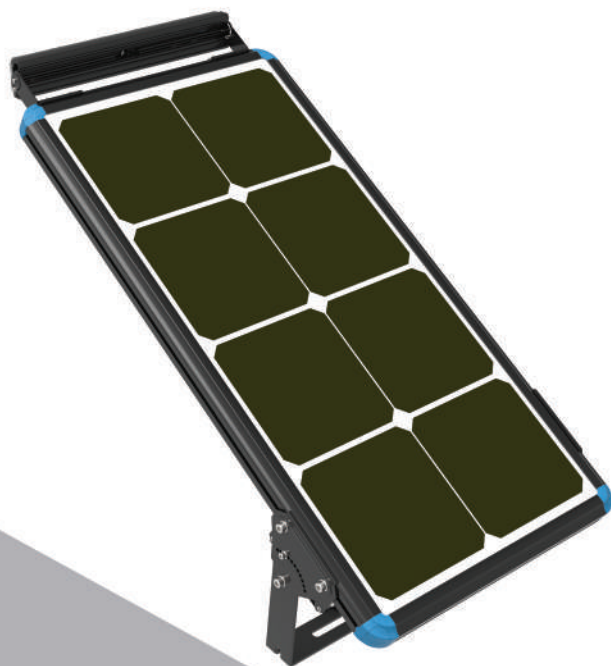
IK08

MSDS

LM80

SALT
SPRAY

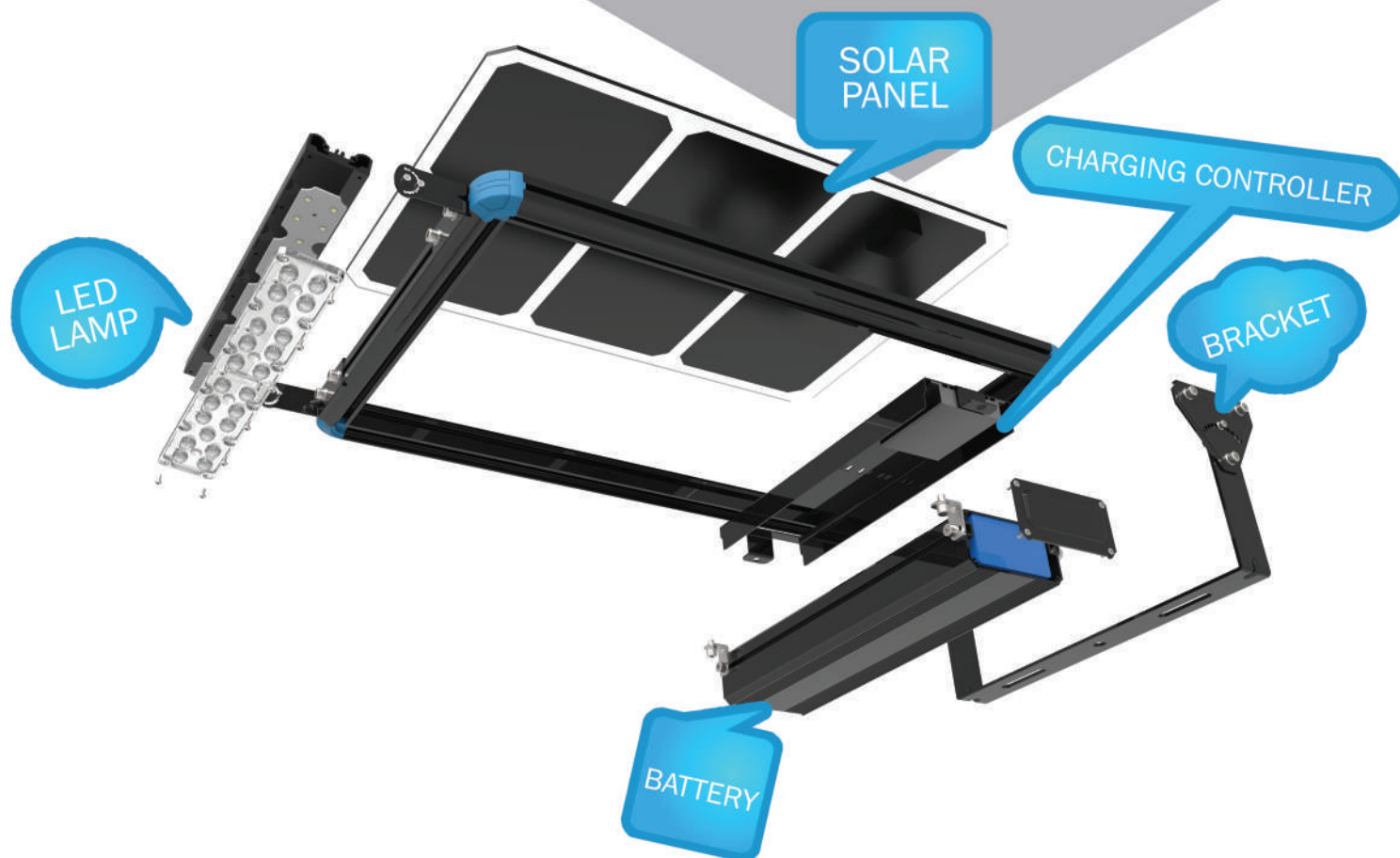
VIBRATION



INTRODUCTION:

This solar LED Flood light has the same application as the normal LED flood light. However it has a distinct advantage, as there is no need for cables and electricity. With its all-in-one design, its solar panel, LED lamp, Lithium battery and charging controller are all integrated in one single body. It is easy to install and work automatically based on day and night. It retains full brightness throughout the whole night and is a great choice for various events that require flood lighting. In addition, it has three beam angles(60°/90°/80°x150°) for choice, which can meet all flood lighting requirements based on different applications.

PRODUCT STRUCTURE



UNIQUE SALES POINT:

1 Designed in Germany

All of our products are designed by our R&D team in Germany. They are all solo patented in the market, which is great for your brand promotion and price campaign



2 Monocrystalline Solar Panel

We use class A monocrystalline solar panel as our charging source. Its 24% charging efficiency is much higher than normal monocrystalline (17%) or polycrystalline.



3 LM80 PHILIPS LED

High brightness and low light decay LM80 certified Philips LED is adopted for our lamp, which is famous LED brand all over around the world. It can still stay 99.3% brightness after 10000 hours.



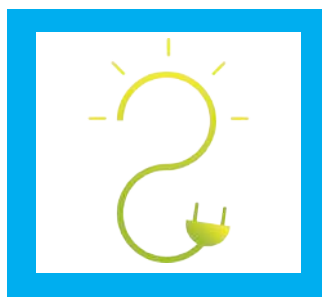
4 Lithium Battery

The level-A standard LiFePO4 lithium battery is used for our lamp. It not only has a 5 times longer lifespan than lead-acid batteries but it also has charging depth, high/low temperature protection. It increases the lifespan of a battery to 12 years.



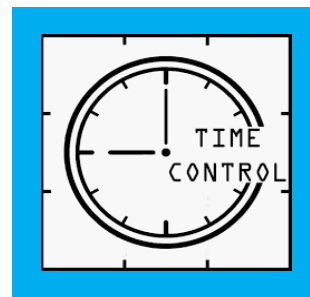
5 MPPT Charging Controller

As the heart of solar LED light, the controller has played an important role. We use a MPPT(-Maximum Power Point Tracking) charging controller as our solution. Its charging efficiency is 20%-30% higher than a PWM solution. It also has protection against over-current, over-voltage, over-heating for a long lifespan



6 Intelligent Lighting

Our lamp has adopted the latest intelligent lighting system. The lamp can work automatically based on day and night and will be full brightness always throughout the whole night. There will be no more setting after your installation.



UNIQUE SALES POINT:

7 Adjustable Bracket Angle

The bracket angle can be adjusted by ± 90 degrees, which ensure that the solar panel can be adjusted to meet the different latitude and longitude requirements of each specific country.



8 Adjustable Lighting Angle

The LED module can also be adjusted by ± 60 degree, which ensures different lighting effects based on different application. In addition, it has three beam angles for choice- $60^\circ/90^\circ/80^\circ \times 150^\circ$



9 Easy Maintenance

All of our designs are designed with an easy-plug, which makes for easy replacements of main parts (battery, controller, LED module). With this easy maintenance design, it greatly decreases the maintenance labor cost and increase the rate of investment of projects.



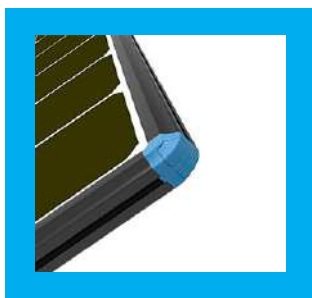
10 Anti-theft

For solar light, anti-theft is an important factor that is considered. Our lamps are all designed with solo anti-theft screws. Without our specific tool, it is impossible to steal our lamp from the pole.



11 Anti-strom

A swing frame structure is designed for our lamp, which is highly resistant to wind attack and highly guarantee its safety since it is installed in high pole. It can be available for 176km/h wind.



12 Anti-rust

The seaside is a popular place for solar street light. Rust is however a concerning factor which can decrease the lifespan of a solar LED light. Our lamp adopts all aluminum material to achieve an anti-rust solution for application by the seaside.

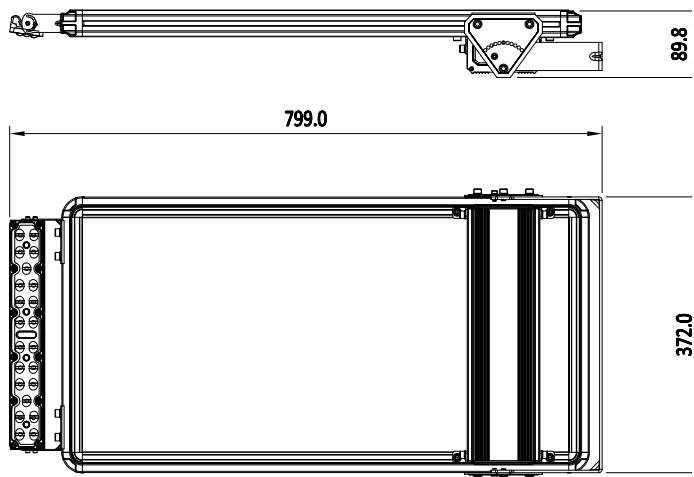


SOLAR LED FLOOD LIGHT SPECIFICATIONS

PRODUCT PICTURE



PRODUCT SIZE



DATA SHEET

Model NO.	DEL-DF1-20
LIGHTING	
Efficiency	200-240LM/W
LED Chip	Philips 3030 (certified per IESNA LM-80 TM-21)
CCT	3000K/4000K/5000K/5700K
Lifespan	50 000 hours (12 years)
Max power	20W
Nominal power	10W
Typical Luminous Flux	2000-2400LM
Beam angle	60°/90°/80°x150°
Working way	100% brightness with 12 hours per day
PHOTOVOLTAIC PANEL	
Technology	Mono-crystalline photovoltaic panels

Model NO.	DEL-DB1-20
Power of PV Module	50Wp
Lifespan	25 years
BATTERY	
Technology	LiFePO4(Lithium Iron Phosphate)
Lithium Battery	256WH
Autonomy	3 Rainy days
Lifespan	12 years
CHARGING CONTROLLER	
Technology	MPPT(Maximum Power PointTracking)
Lifespan	12 years
GENERAL	
Dimension	799*372*90MM
Weight	10.6KG
IP	IP66
Working Temperature	-20°C to +60°C

LUX DATA

