

Advantage

- Quick Installation for each troffer which only takes five minutes.
- 0-10V dimmable function help to reduce operation cost.
- 110 lumens per watt help to reduce pay back period of energy saving.
- 100000 hours working time and 7 years warranty.



MagicTroffer



2x2'



2x4'

Common Technical Data

Color Temperature	2700K to 5000K	Input Voltage with ballast	100-277V or AC100-382V
Beam Angle	120 degree	Frequency	50-60Hz
Color Consistency	4 steps	Power Factor	More than 0.99
CRI	More than 80	Rated Life	100,000 hours
Operation Temperature	-30-40C	Led Type	SMT 2835
Efficiency with ballast	More than 110 LPW	Housing	Aluminum+PC
UL, cUL and FCC certified			

Ordering Guide

ZY	T4/T7	30W/36W/40W/50W	XNZ/XDZ
Company Code	Size	Wattage	Non Dimmable/ Dimmable

Warranty

This product has a warranty of period of 5 years from the date of purchase. The warranty is invalid in the case of improper use installation, tampering, and removal of the Q.C. date label, installation in an improper working environment or installation not according to the current edition of the National Electric Code. Should this product fail during the warranty period it will be replaced free of charge, subject to correct installation and return of the faulty unit. James does not accept responsibility for any installation costs associated with the replacement of this product. This warranty is in addition to the statutory rights in your country of purchase. James reserves the right to alter specifications without prior notice.

Product Specification

Product Number	Wattage	Color	Voltage	Lumens	Working Hours	CRI
2x2 Troffer						
ZY-T4-30W XNZ	30	3000K	AC100-277V or AC100-382V	3300	100,000	80
ZY-T4-30W XNZ	30	3500K	AC100-277V or AC100-382V	3300	100,000	80
ZY-T4-30W XNZ	30	4000K	AC100-277V or AC100-382V	3300	100,000	80
ZY-T4-30W XNZ	30	5000K	AC100-277V or AC100-382V	3300	100,000	80
ZY-T4-30W XDZ	30	3000K	AC100-277V or AC100-382V	3300	100,000	80
ZY-T4-30W XDZ	30	3500K	AC100-277V or AC100-382V	3300	100,000	80
ZY-T4-30W XDZ	30	4000K	AC100-277V or AC100-382V	3300	100,000	80
ZY-T4-30W XDZ	30	5000K	AC100-277V or AC100-382V	3300	100,000	80
ZY-T4-36W XNZ	36	3000K	AC100-277V or AC100-382V	3960	100,000	80
ZY-T4-36W XNZ	36	3500K	AC100-277V or AC100-382V	3960	100,000	80
ZY-T4-36W XNZ	36	4000K	AC100-277V or AC100-382V	3960	100,000	80
ZY-T4-36W XNZ	36	5000K	AC100-277V or AC100-382V	3960	100,000	80
ZY-T4-36W XDZ	36	3000K	AC100-277V or AC100-382V	3960	100,000	80
ZY-T4-36W XDZ	36	3500K	AC100-277V or AC100-382V	3960	100,000	80
ZY-T4-36W XDZ	36	4000K	AC100-277V or AC100-382V	3960	100,000	80
ZY-T4-36W XDZ	36	5000K	AC100-277V or AC100-382V	3960	100,000	80

2x4 Troffer

ZY-T7-40W XNZ	40	3000K	AC100-277V or AC100-382V	4400	100,000	80
ZY-T7-40W XNZ	40	3500K	AC100-277V or AC100-382V	4400	100,000	80
ZY-T7-40W XNZ	40	4000K	AC100-277V or AC100-382V	4400	100,000	80
ZY-T7-40W XNZ	40	5000K	AC100-277V or AC100-382V	4400	100,000	80
ZY-T7-40W XDZ	40	3000K	AC100-277V or AC100-382V	4400	100,000	80
ZY-T7-40W XDZ	40	3500K	AC100-277V or AC100-382V	4400	100,000	80
ZY-T7-40W XDZ	40	4000K	AC100-277V or AC100-382V	4400	100,000	80
ZY-T7-40W XDZ	40	5000K	AC100-277V or AC100-382V	3960	100,000	80
ZY-T7-50W XNZ	50	3000K	AC100-277V or AC100-382V	5500	100,000	80
ZY-T7-50W XNZ	50	3500K	AC100-277V or AC100-382V	5500	100,000	80
ZY-T7-50W XNZ	50	4000K	AC100-277V or AC100-382V	5500	100,000	80
ZY-T7-50W XNZ	50	5000K	AC100-277V or AC100-382V	5500	100,000	80
ZY-T7-50W XDZ	50	3000K	AC100-277V or AC100-382V	5500	100,000	80
ZY-T7-50W XDZ	50	3500K	AC100-277V or AC100-382V	5500	100,000	80
ZY-T7-50W XDZ	50	4000K	AC100-277V or AC100-382V	5500	100,000	80
ZY-T7-50W XDZ	50	5000K	AC100-277V or AC100-382V	5500	100,000	80

Installation Instructions



LED TROFFER

T-5 SERIES

Important

READ INSTRUCTIONS CAREFULLY BEFORE INSTALLING.
KEEP THESE INSTRUCTIONS FOR FUTURE REFERENCE

fixtures must be wired in accordance with the National Electrical Code and all applicable local codes. Proper grounding is required for safety.

THIS PRODUCT MUST BE INSTALLED IN ACCORDANCE WITH THE APPLICABLE INSTALLATION CODE BY A QUALIFIED ELECTRICIAN WHO IS FAMILIAR WITH THE CONSTRUCTION AND OPERATION OF THE PRODUCT AND THE HAZARDS INVOLVED.

WARNING - Risk of fire or electric shock. Panel Light installation requires knowledge of luminaires and electrical systems. If not qualified, DO NOT attempt installation. Contact a qualified electrician.

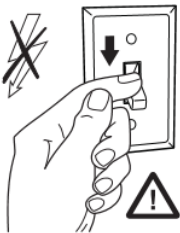
WARNING - Risk of fire or electric shock. Suitable for wet locations. Make sure the power is off prior to installation.

WARNING - Risk of fire or electric shock. Suitable for flat T-Grid in non-insulated ceilings. Access above ceiling required. DO NOT cover fixture with insulation liner or similar material.

WARNING - DO NOT install in unstable, loose or easily breakable surfaces.

WARNING - DO NOT let objects impact or exert force on the surface of the fixture.

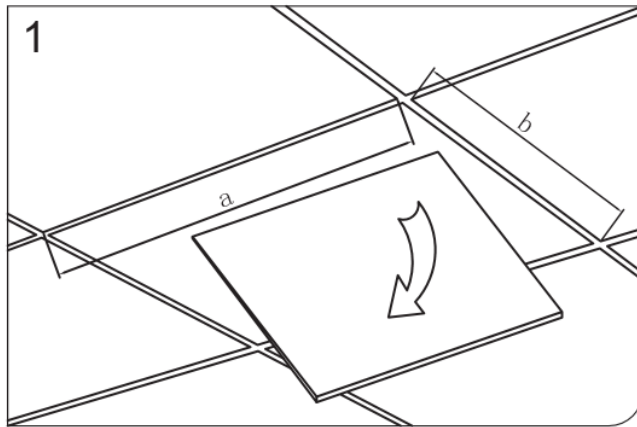
Installation and Electrical Connection



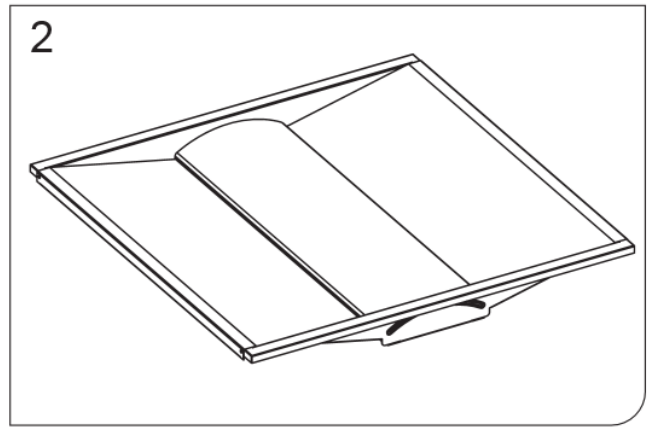
⚠ WARNING

RISK OF FIRE, ELECTRIC SHOCK OR PERSONAL INJURY

Before installation, turn power off.



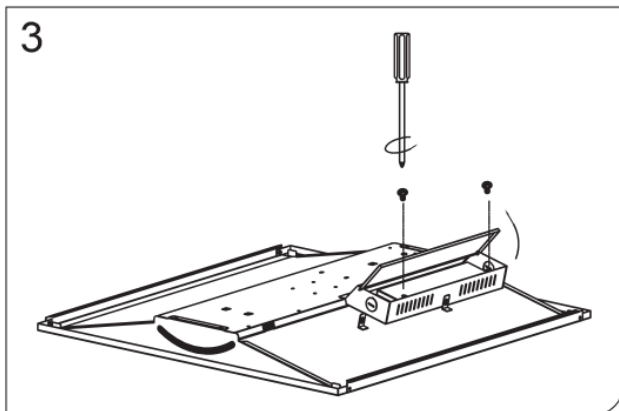
1. Open a hole or fix the T Bar on the ceiling.



2. Take the Volumetric Panel out of the carton.

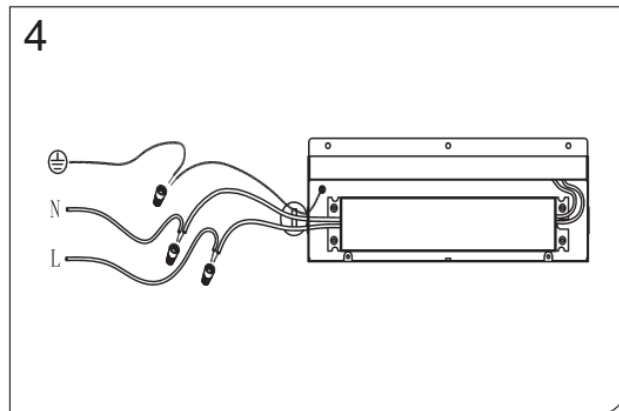
Installation and Electrical Connection

3



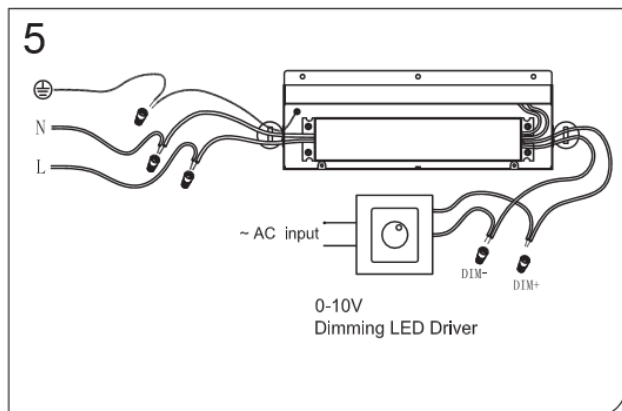
3、Open the terminal block.

4



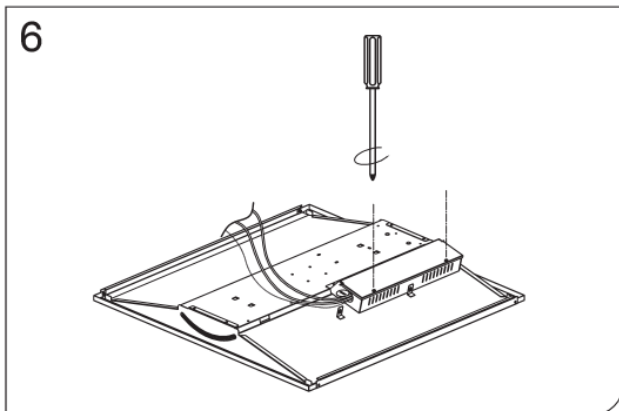
4、Connect the AC wire.

5



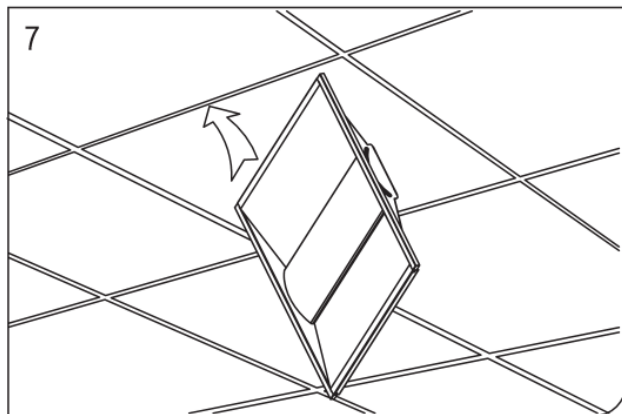
5、Connect dimming wire.

6



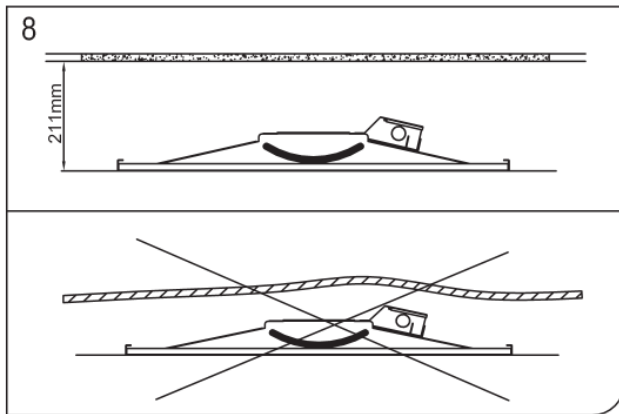
6、After the power cord is correctly connected, reinstall the access plate.

7



7、Install the fixture into the ceiling or designated space.

8



8、Not for use in applications where contact with insulation will occur.