

PRODUCT DESCRIPTION

When it comes to lighting a large area, this product is the ideal solution for high impact lighting of mine-haul road intersections road works, construction sites, events and general industrial land maintenance programs.

SPECIFICATIONS/FEATURES

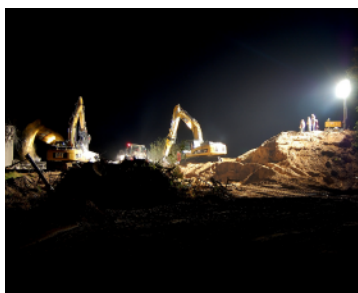
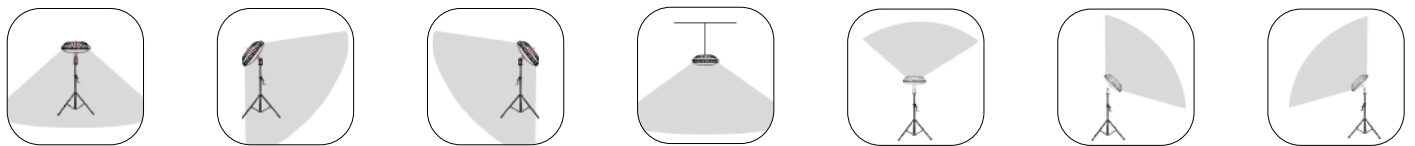
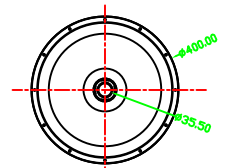
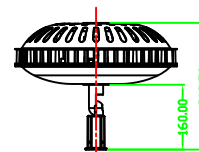
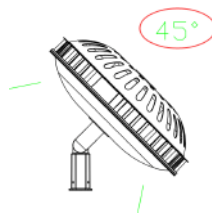
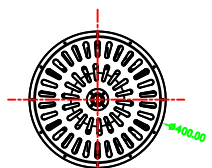
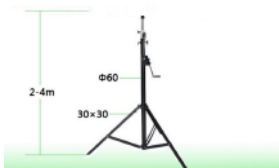
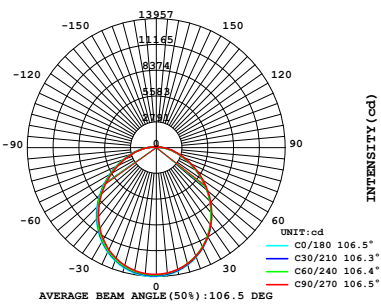
- » Input Voltage: 100-277V AC or 24V DC
- » Type of installation: Portable
- » Colour handle: Black
- » Power supply cable: SJTW 18AWG*3C / 5M(16.40ft)
- » Lamp cover : opal
- » Lifespan>50,000 hours
- » Type of protection: IP65
- » Impact protection: IK08 (5 Joule)
- » 5 years limited warranty
- » Beam Angle: 100 Deg



130Lm/W

SJTW 18AWG*3C / 5M(16.40ft)

-40°F to 122°F (-40°C to +50°C)



MOBILE LED DISK

Suitable for various areas of complex terrain It is convenient to dismantle,assemble,in order to carry,preserve.

Accessory



Tripod Bracket 2M
1 PCS: 15KG



Tripod Bracket 4M
1 PCS: 17.1KG



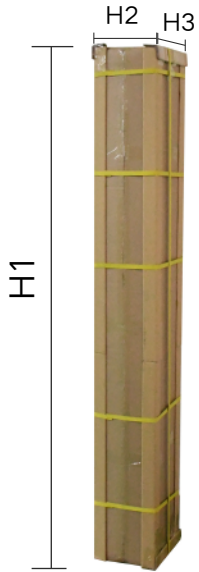
Bag



Safety Cable
(To fix the tripod)



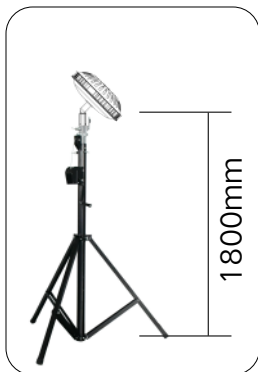
Bracket
(For HB version)



H1:1700mm

H2:240mm

H3:270mm



1800mm



4000mm



TECHNICAL SPECIFICATIONS

Model No.	Wattage (W)+/- 10%	AC Input	Lumens +/- 5%	CCT	PF	Dimensions H*D	Cable length	Certificate
YL-MD300-M-XXK	300	100~277V AC 50/60Hz	39000	2700-6500K	≥0.9	400*313 (mm) 15.75" x12.32"	5.00M 16.45ft	ETL
YL-MD300-X-XXK		24V DC						
YL-HB300-M-XXK		100~277V AC 50/60Hz						
YL-HB300-X-XXK		24V DC						