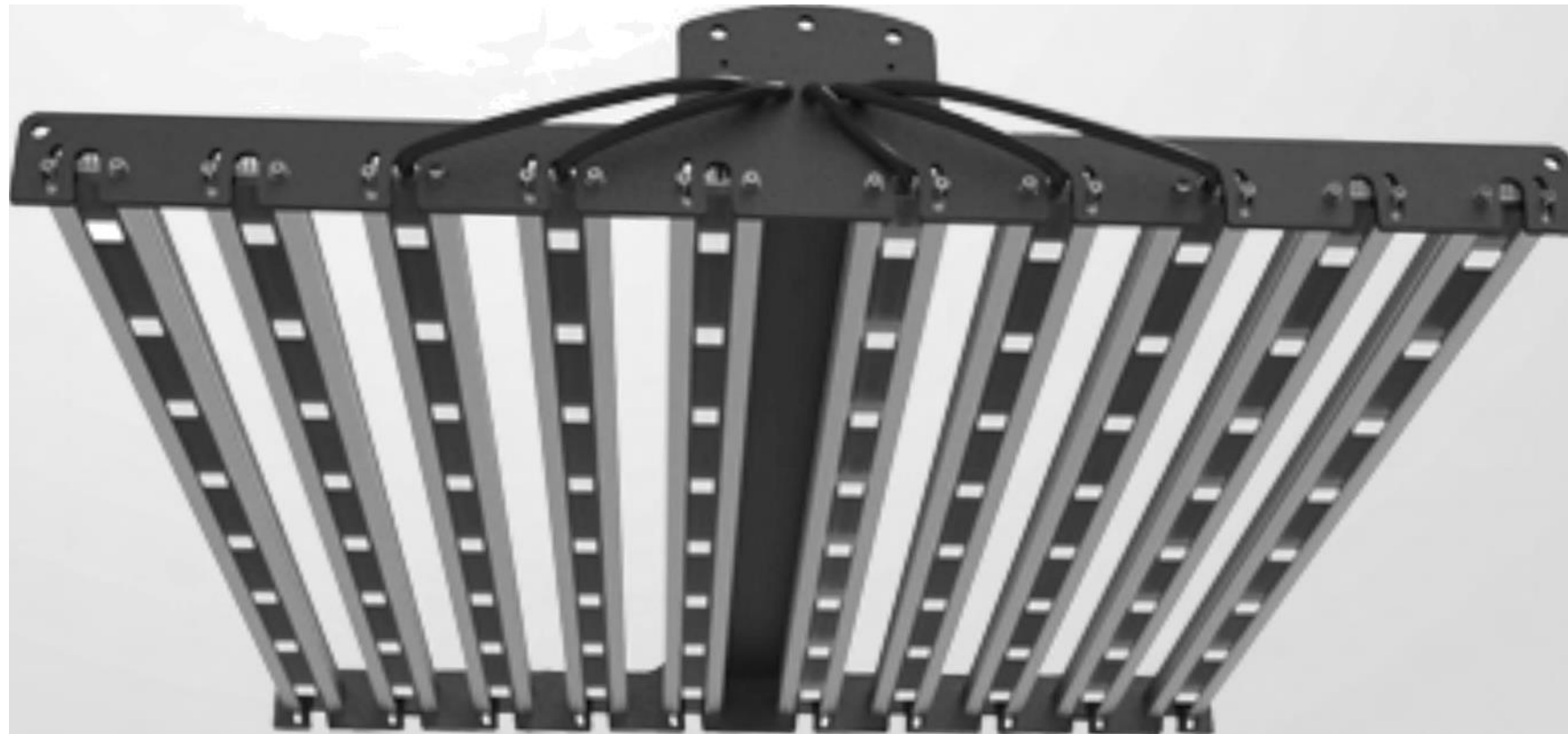


LED Grow Light

Multiple Linear Series

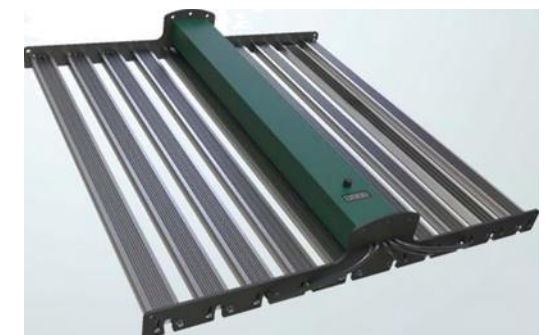


General Description

This series product integrated heat sinks and driver, extrusion pure aluminum can 100% ensure heat dissipation. Marijuana will grow better under the Full Spectrum LED Grow Lights, as well their yield d, will increase hugely. We recommend that Hydroponic growing systems can be simple affairs such as Wick or NFT or more complex indoor growing concepts Sea of Green or Screen of Green or large grow systems, so our full spectrum LED lights is a smart choice for your plants.



Full Spectrum



LED Grow Light

Multiple Linear Series



Features

- On/off devices to make control I much easier
- Step dimming for different period of growth
- Adjustable power consumption, lumination area and lumination direction n
- Full spectrum for different period of growth
 - « High power branded Epilepsy with high Par Value
 - » Including Special spectrum like IR (Infrared) to increase the yield.
- Passive heat sinks and integrated driver
- Energy Saving,environmental friendly
- Adjustable linear bar quantity to make much more convenient repairment and replacement in the future

Applications

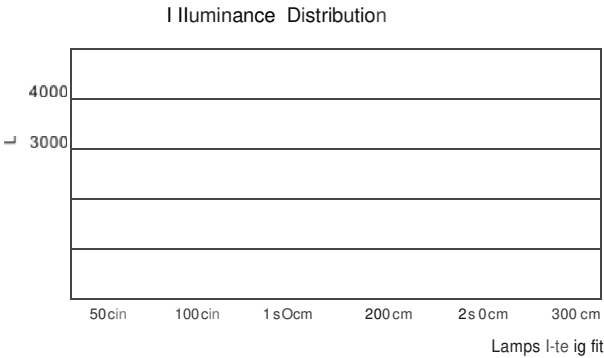
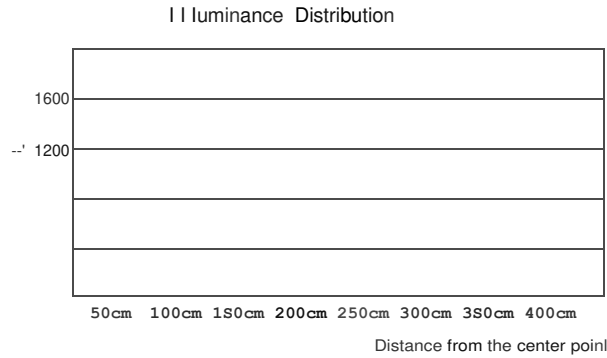
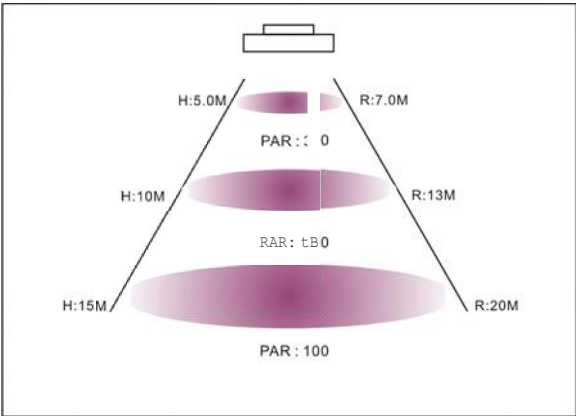
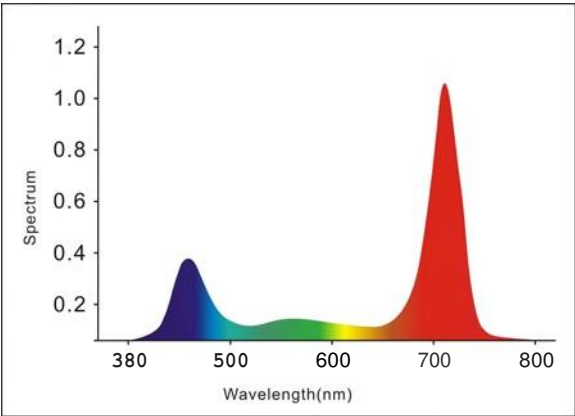
- Hydroponics, Horticulture, Agriculture and Greenhouse
- Seeding, Rooting, Breeding, Flowering and Fruiting period
- Locations: Farm, Exhibition, Garden, Home, Urban, Bonsai, and University Lab
- Growth of Fruits, Vegetables, Flowers, Marijuana and so on

TypicalI model specification

Product Number	HPS/HID Replace	Power Consume	Light Spectrum	Heigh above plants (m)	Lumens	Input Voltage	Lifespan
GL-K500W CYZ	1000W	500W	Full Spectrum	0.4-2.5meter	25000	AC100-277V/200-480V	50000 hours
GL-K450W CYZ	900W	450W	Full Spectrum	0.4-2.5meter	22500	AC100-277V/200-480V	50000 hours
GL-K400W CYZ	800W	400W	Full Spectrum	0.4-2.5meter	20000	AC100-277V/200-480V	50000 hours
GL-K350W CYZ	700W	350W	Full Spectrum	0.4-2.5meter	17500	AC100-277V/200-480V	50000 hours



Optical parameters



Spectrum



440nm Blue



460nm Blue



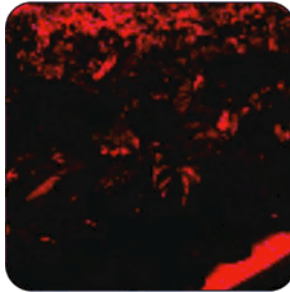
525nm Green



625nm Red



660nm Deep Red



730nm Deep Red

380nm to 800 nm wavelength full spectrum Our supplemental spectrum LED lights are perfect for plants, which want to supplement their existing lighting system

Regarding Installation

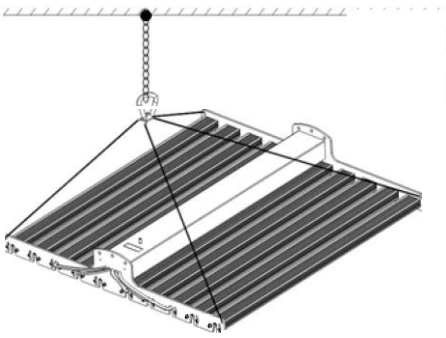
Our engineers have focused on grow light development more than 5 years, so our installation methods are always easy and fast. You even don't need a professional person to complete it.

! .WARNING
RISK OFFIRE, ELECTRIC SHOCK OR PERSONAL INJURY
Before installation, turn power off.

The specific steps of installation



- 1. Take out the fixture and accessory from cartoon box.
- 2. Fix chain to the point of installation, make sure the point of installation can bear at least 50 Kg weight.



- 3. Install the hook across chain, adjust the high and level, let the light suitable for plants.
- 4. Join the power cable plug, and turn on the power to test luminaires.

