



80W

ALL-IN-ONE SOLAR LED STREET LIGHT SPECIFICATION



RoHS



IP66

IK08

MSDS

LM80

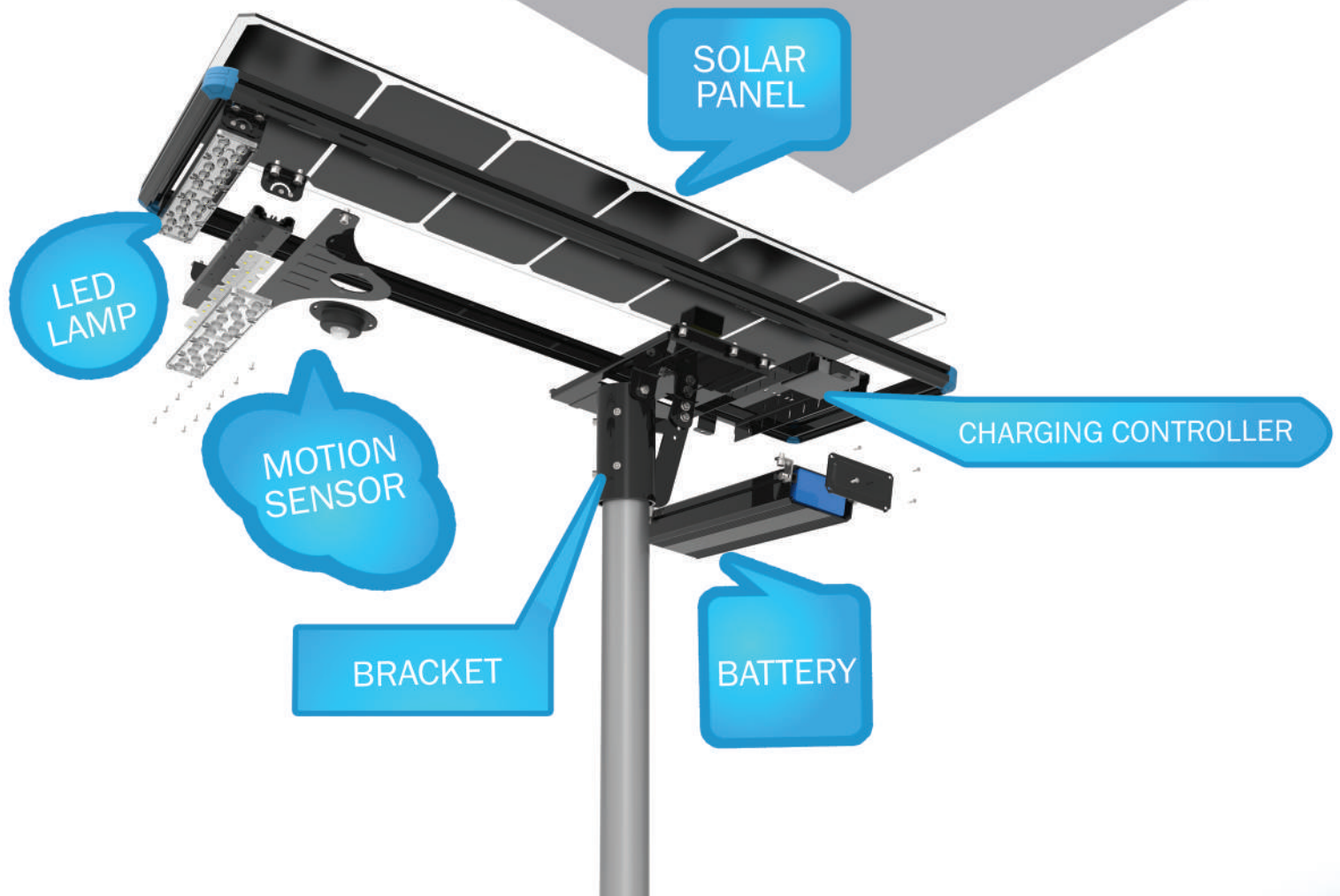
SALT
SPRAY

VIBRATION

INTRODUCTION:

The All-in-One solar LED street light is the newest technology for solar street lights. With its all-in-one design, its solar panel, LED lamp, lithium battery and charging controller are all integrated into one single body. With this new technology, there is no need for cables or any digging of underground spaces to store its battery. Installation can also be done very quickly. Additionally, this solar LED street light is comprised of the latest intelligent lighting system. The lamp works automatically based on the time of day. It has three settings including a motion sensor, time-control and internet control, to meet different requirements. There will be no need for unnecessary settings after installation. Compared to traditional solar street lights, it is much easier to install and transport, with a longer lifespan than lead-acid batteries and is also cheaper to maintain.

PRODUCT STRUCTURE



UNIQUE SALES POINT:

1 Designed in Germany

All of our products are designed by our R&D team in Germany. They are all solo patented in the market, which is great for your brand promotion and price campaign



2 Monocrystalline Solar Panel

We use class A monocrystalline solar panel as our charging source. Its 24% charging efficiency is much higher than normal monocrystalline (17%) or polycrystalline.



3 LM80 PHILIPS LED

High brightness and low light decay LM80 certificated Philips LED is adopted for our lamp, which is famous LED brand all over around the world. It can still stay 99.3% brightness after 10000 hours.



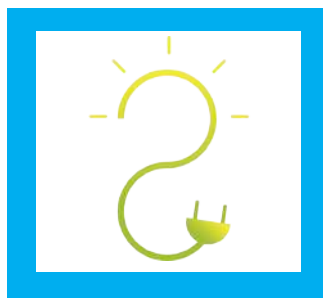
4 Lithium Battery

The level-A standard LiFePO4 lithium battery is used for our lamp. It not only has a 5 times longer lifespan than lead-acid batteries but it also has charging depth, high/low temperature protection. It increases the lifespan of a battery to 12 years.



5 MPPT Charging Controller

As the heart of solar LED street light, the controller has played an important role. We use a MPPT(Maximum Power Point Tracking) charging controller as our solution. Its charging efficiency is 20%-30% higher than a PWM solution. It also has protection against over-current, over-voltage, over-heating for a long lifespan



6 Intelligent Lighting

Our lamp has used the latest intelligent lighting system. The lamp can work automatically based on day and night. It has three working ways(Motion Sensor/Time Control/Internet Control) according to different requirements. There will be no more setting after your installation.



UNIQUE SALES POINT:

7 Adjustable Bracket Angle

The bracket angle can be adjusted by ± 30 degree, which ensures that the solar panel can be adjusted also to meet the different latitude and longitude requirements based on each specific country.



8 Adjustable Lighting Angle

The LED module can also be adjusted by ± 60 degree, which ensures different beam angle lighting effects based on different applications.



9 Easy Maintenance

All of our designs are designed with an easy-plug, which makes it easy to replace parts (battery, controller, LED module). With this easy maintenance design, it greatly decreases the maintenance labor cost and highly increase the rate of investment of projects.



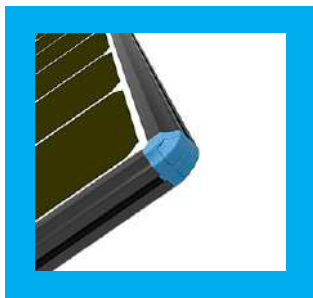
10 Anti-theft

For solar street light, anti-theft is an important factor that is considered. Our lamps are all designed with solo anti-theft screws. Without our specific tool, it is impossible to steal our lamp from the pole.



11 Anti-strom

A swing frame structure is designed for our lamp, which is highly resistant to wind attack and highly guarantee its safety since it is installed in high pole. It can be available for 176km/h wind.



12 Anti-rust

The seaside is a popular place for solar street light. Rust is however a concerning factor which can decrease the lifespan of a solar street light. Our lamp adopts all aluminum material to achieve an anti-rust solution for application by the seaside.

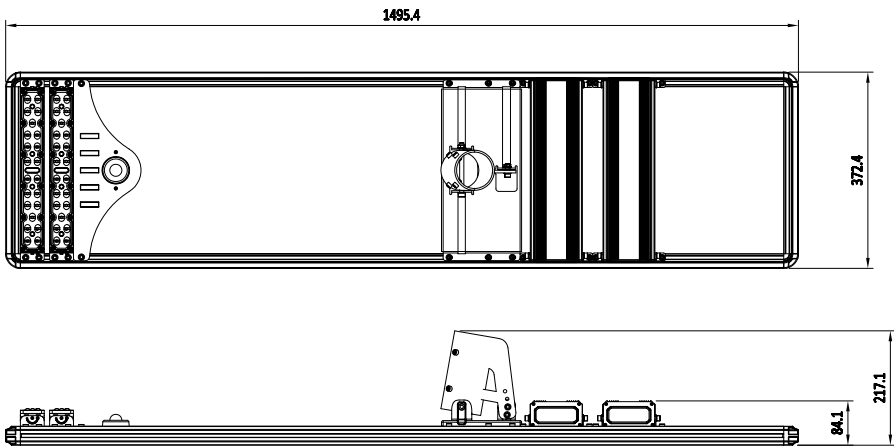


ALL-IN-ONE STREET LIGHT SPECIFICATIONS

PRODUCT PICTURE



PRODUCT SIZE



DATA SHEET

Model NO.	DEL-DN4-80
LIGHTING	
Efficiency	200-240LM/W
LED Chip	Philips 3030 (certified per IESNA LM-80 TM-21)
CCT	3000K/4000K/5000K/5700K
Life span	50 000 hours (12 years)
Max power	80W
Nominal power	40W
Typical Luminous Flux	8000-9600LM
Beam angle	80°x150°
Working way	Motion Sensor/Time Schedule
PHOTOVOLTAIC PANEL	
Technology	Mono-crystalline photovoltaic panels
Power of PV Module	100Wp
Lifespan	25 years

Model NO.	DEL-DN4-80
BATTERY	
Technology	LiFePO4(Lithium Iron Phosphate)
Lithium Battery	512WH
Autonomy	3 Rainy days
Lifespan	12 years
CHARGING CONTROLLER	
Technology	MPPT(Maximum Power Point Tracking)
Lifespan	12 years
GENERAL	
Dimensions	1495*372*84MM
Weight	17.8KG
IP	IP66
Working Temperature	-20°C to +60°C
Recommended Installation Height	7-9M
Recommended Installation Distance	25-35M
Recommended Diameter of Top mounting	55-65MM

LUX DATA

