

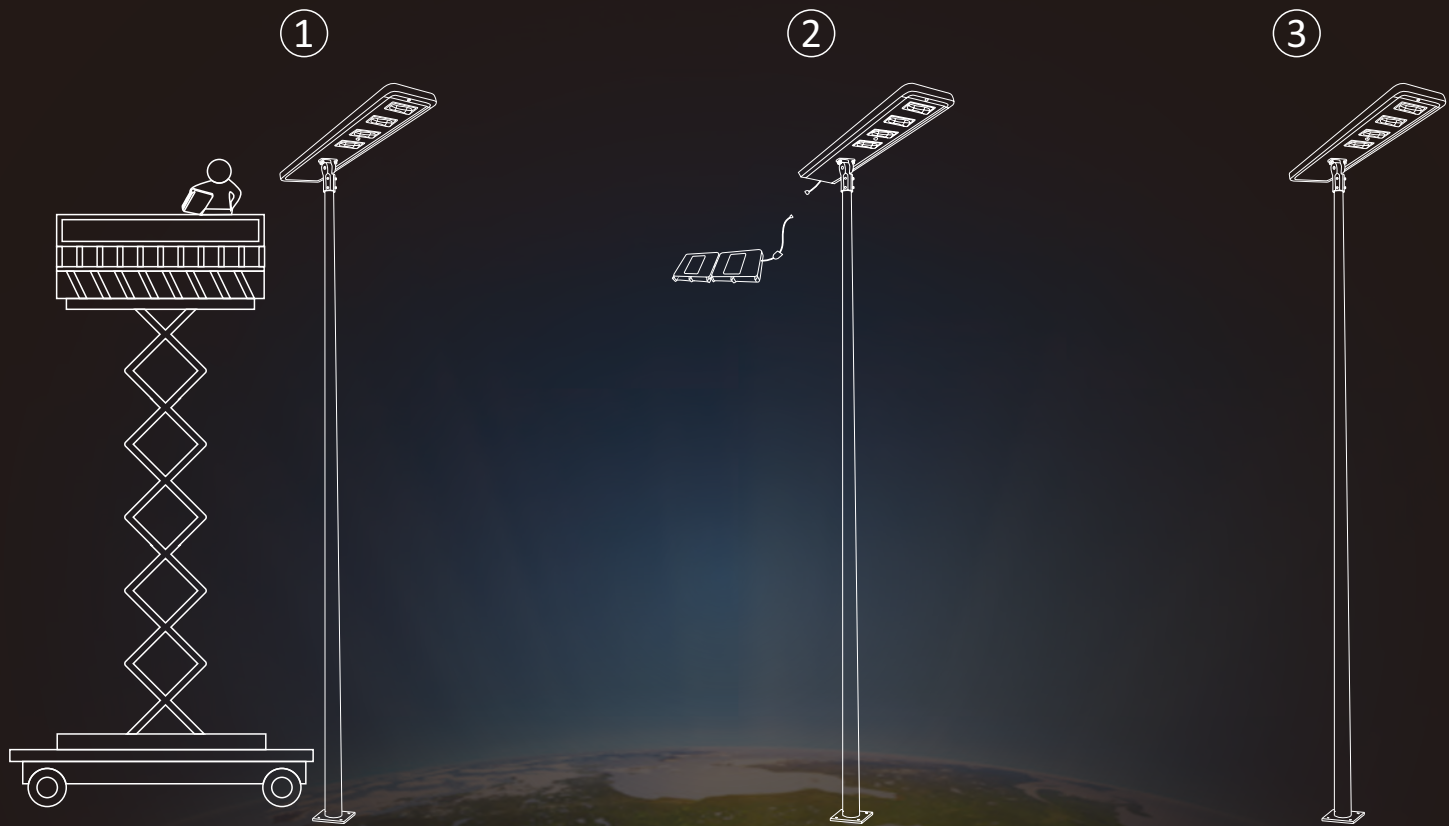


MAKE A DIFFERENCE FROM THE INSIDE OUT

Redefine the design of all in one
solar street light

COMPACT DESIGN

battery pack built in the lamp body,
convenient to replace the battery



① Remove the 4 screws to open the rear cap, disconnecting cables, take out the old battery pack

② Prepare the new battery pack

③ Connect cables and lock screws

The whole process take 4-5 mins only

EXTEND BATTERY LIFE

Grade A Lithium-ion Battery pack with unique battery box , IP66 waterproof, high temperature resistance , no risk of explosion



Internal Battery
Pack Protection



Unique battery box

EXCELLENT SURFACE TREATMENT

Die cast aluminum + profile aluminum materials
Anti-corrosion



MULTIPLE INSTALLATION WAYS

satisfy different project demands



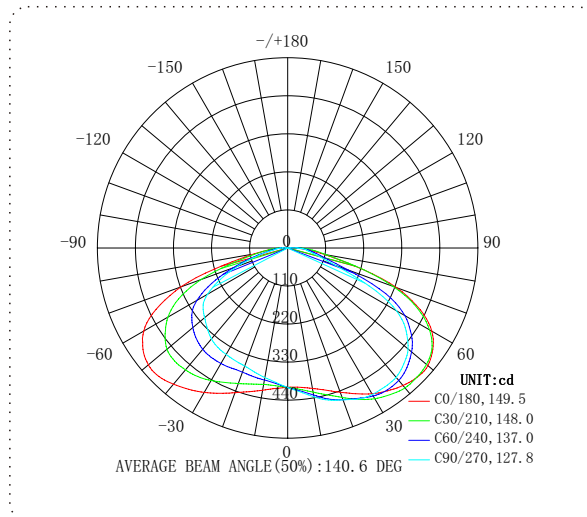
Post top



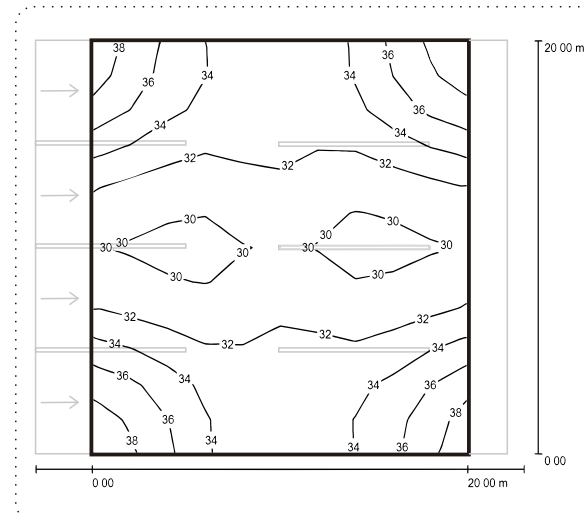
Entry side

Professional light distribution for road lighting

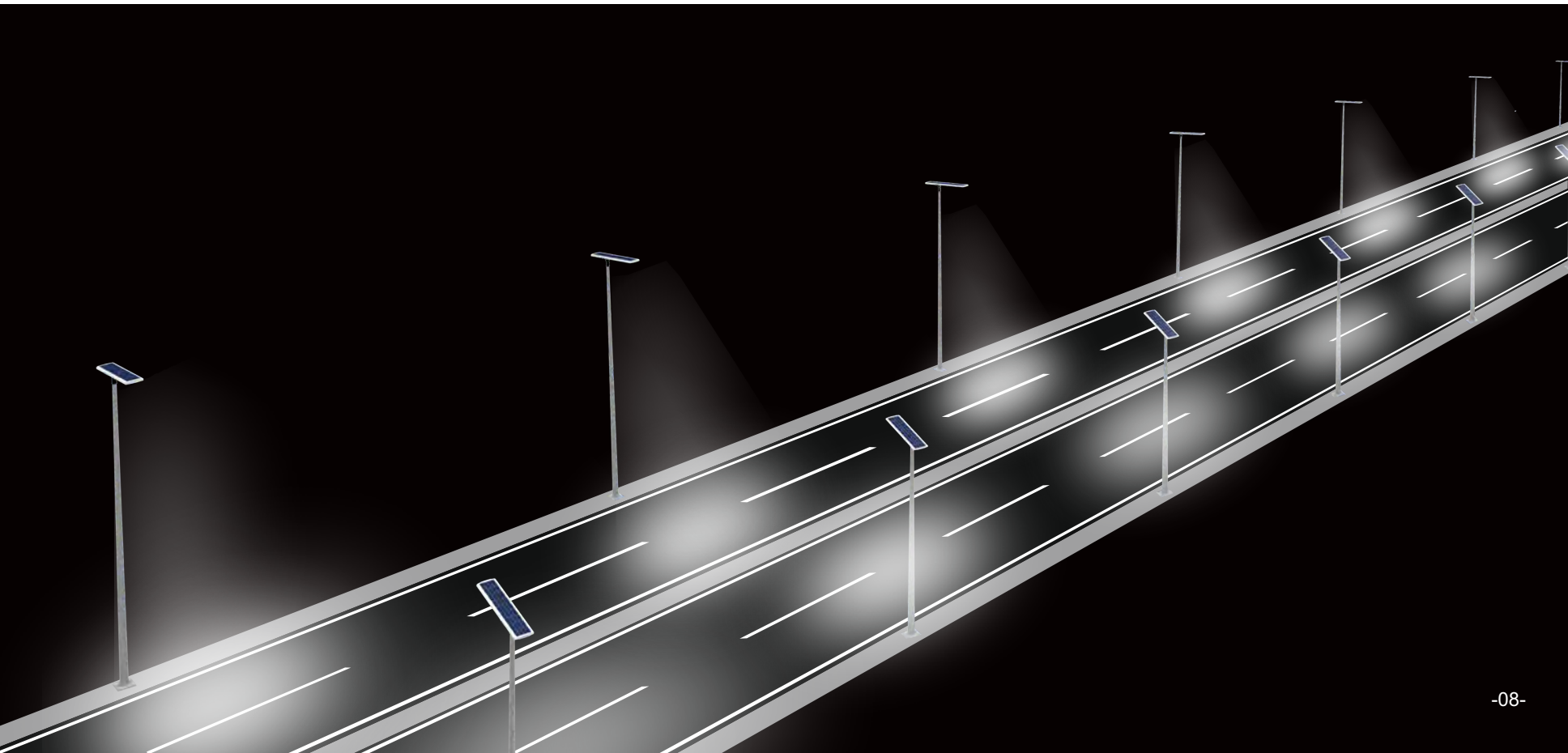
Large Light Distribution



Results overview

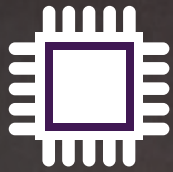


3D Rendering

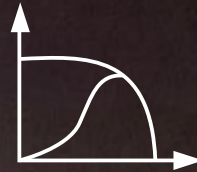


MPPT CONTROLLER INTEGRATED WITH EMS CORE TECHNOLOGY

faster charging, make sure the stability of solar system, increasing the system working efficiency, decreasing the energy consumption.



Energy
Management
System3.0



MPPT Charging
Technology



Solar
panel 21%




8 Years
Lifetime



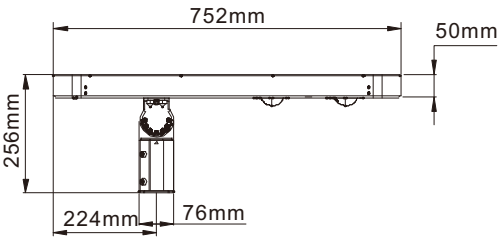
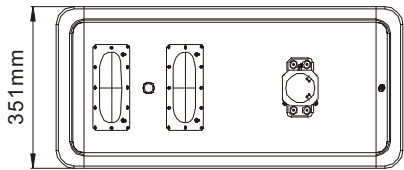
16 Grade
Wind Proof



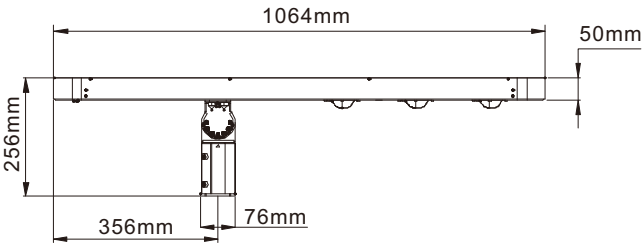
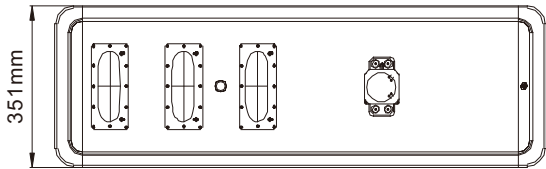
IP66

Model No	XSY-EBM-30	XSY-EBM-40	XSY-EBM-60	XSY-EBM-80
Solar panel	40W	60W	70W	90W
Battery(Lithium-ion)	222WH	388.5WH	444WH	583WH
Luminous flux	4200lm	5500lm	8100lm	11000lm
Led chips				
Warranty	2 years			
Color temp	4000K-6500K			
Beam Angle	TYPE III			
Lamp Angle	0/15/30 degree vertically			
PIR Sensor	Yes(Optimum detecting range:6-8m)			
Standard Working Mode	First 3 hours full brightness,last 9 hours in PIR sensor mode (60% brightness with people,30% brightness without people)			
Back up time	3 nights			
Working Temperature	-20°C to 60°C			
Charging Time	7-9hrs			
Required Pole Size	60 mm(top end)			
IP/IK Class	IP66 / IK08			
Installation Height	4-5m	4-6m	6-8m	7-9m
Installation Distance	15m	20m	25m	25m

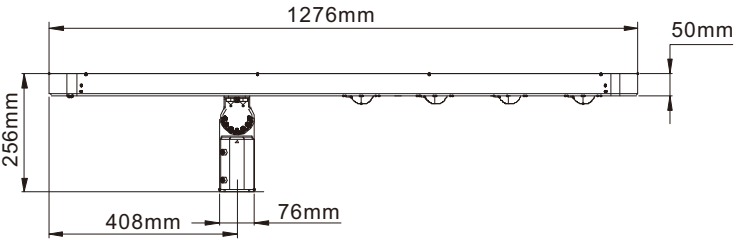
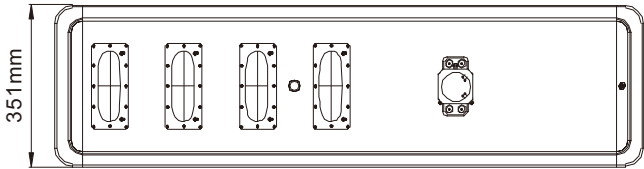
XS-EBM-30



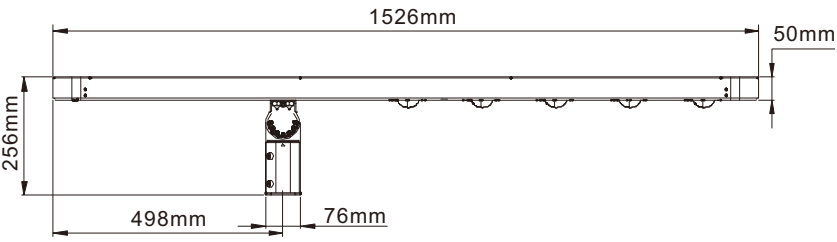
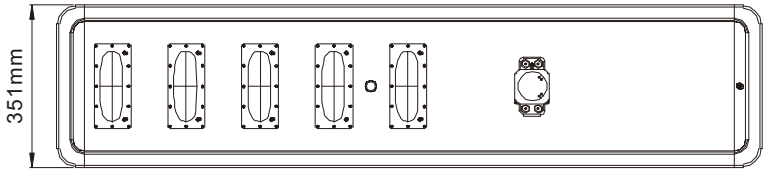
XS-EBM-40

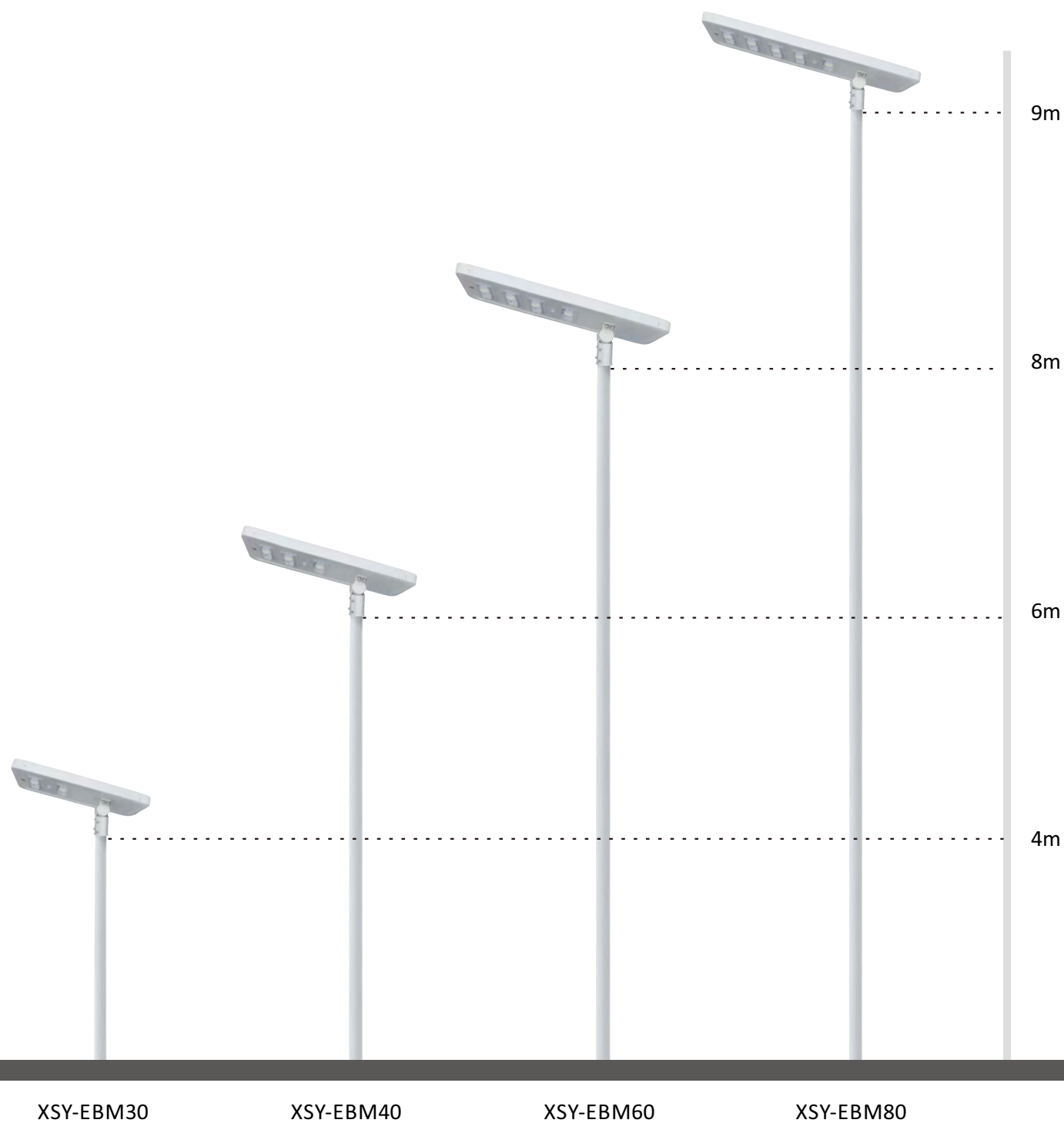


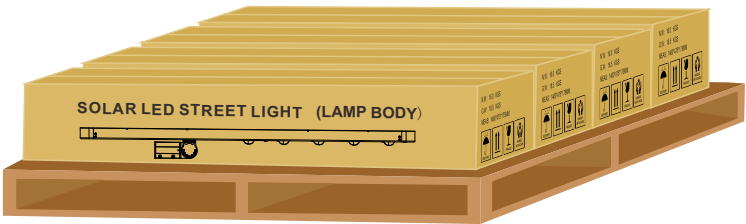
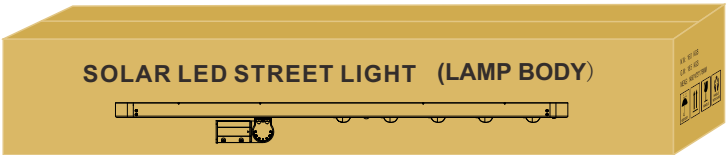
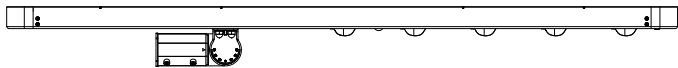
XS-EBM-60



XS-EBM-80



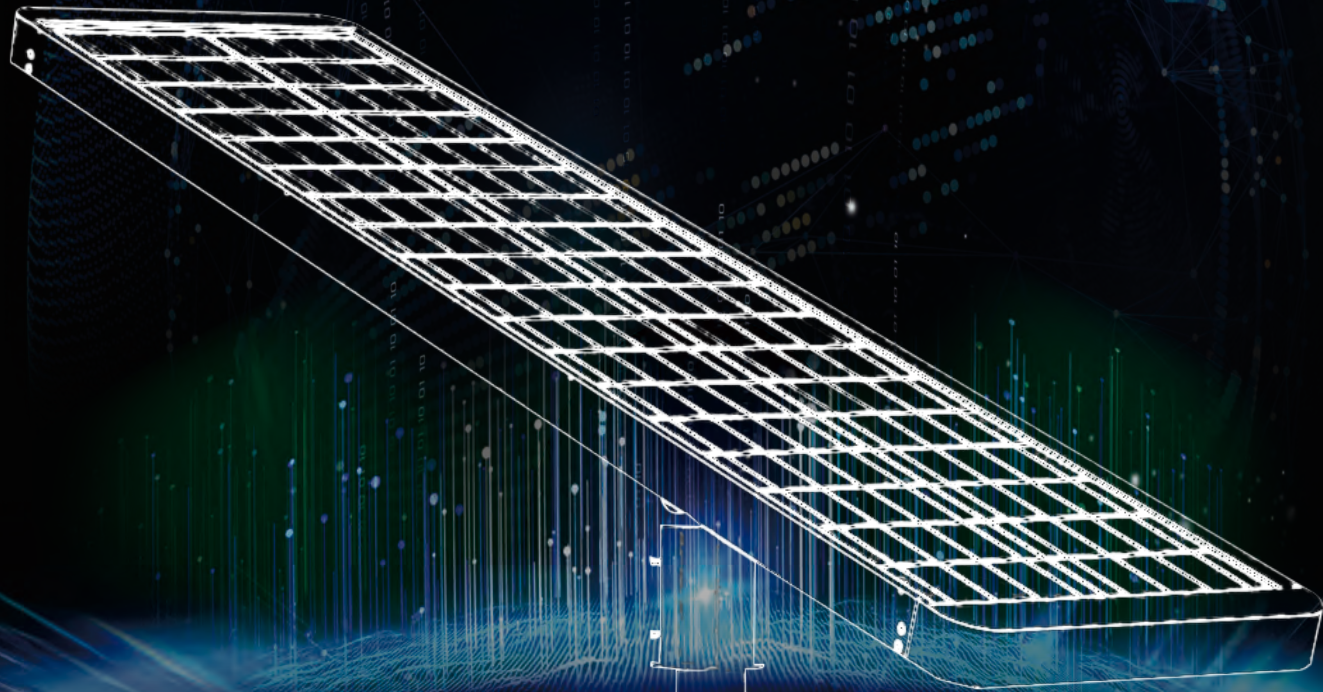




Model No.	XSJ-EBM-30	XSJ-EBM-40	XSJ-EBM-60	XSJ-EBM-80
Lamp Body	870×485×185mm	1180×485×185mm	1390×485×185mm	1640X485X185mm
N.W(KGS)	11.0	15.0	17.5	20.5
G.W(KGS)	13.0	17.5	19.5	23.5

Model No.	XSJ-EBM-30	XSJ-EBM-40	XSJ-EBM-60	XSJ-EBM-80
20GP	360 sets	240 sets	224 sets	216 sets
40GP	732 sets	504 sets	448 sets	372 sets
40HQ	854 sets	588 sets	528 sets	441 sets





Our Mission
**Professional solar street
lighting solution provider**