



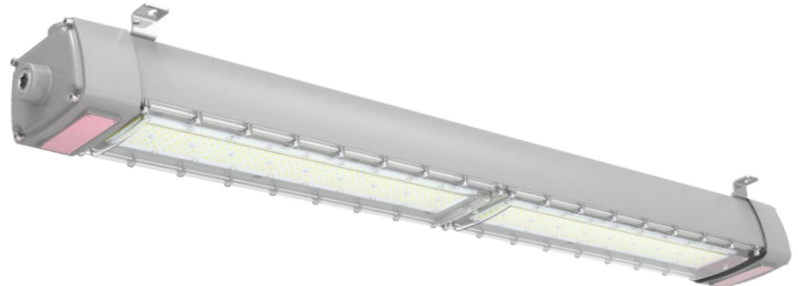
# EX-FLG

## Hazardous Location LED Luminaire

The EX-FLG series LED fixture is the ideal choice for hazardous applications requiring a linear design. It is designed to be installed in areas where flammable gases, vapors, or dusts are expected to create a risk of explosion or fire.



EX-xxxW FLGA2 YZDA-A



EX-xxxW FLGA4 YZDA-A

### Compliance

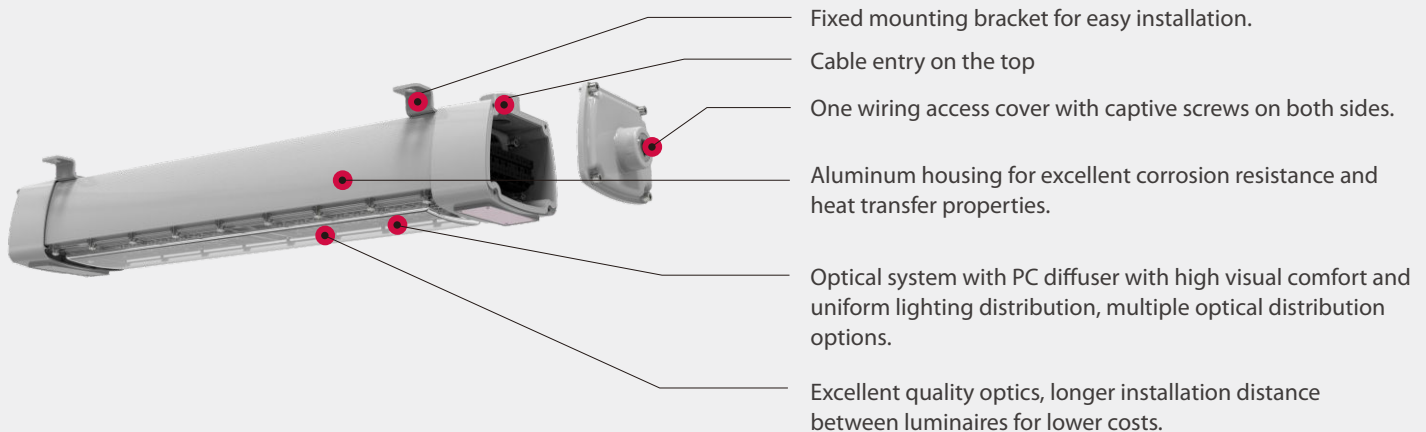
UL 844 Hazardous Locations  
Class I Division 2, Group A, B, C, D  
500 hours salt spray  
IP66  
IK10

### Applications

- ✓ Heavy Industrials Storage Facility
- ✓ Paper Mills
- ✓ Chemical Processing Facility
- ✓ Power Plants
- ✓ Petrochemical Processing Facility
- ✓ Offshore Environments
- ✓ Wastewater Treatment Plants
- ✓ Food and Alcohol Industry



### Built tough.



## Technical Parameter

### • Electrical

Model	EX-xxxW FLG2 YZDA-A	EX-xxxW FLG4 YZDA-A
Power (Adjustable.)	40W-75W	60W-140W
Emergency Option	Yes	Yes
Emergency Power (Max.)	8W (A Series)	8W (A Series)
Emergency Time	1.5 hours	1.5 hours
Input Voltage	AC100-277V; AC100-347V; AC200-480V	
Frequency	50/60Hz	
Power Factor	>0.95	

### • Optical

Model	EX-xxxW FLG2 YZDA-A	EX-xxxW FLG4 YZDA-A
Lumen Output	7400-12500Lm	19000-25000Lm
Efficacy	175 lm/W	
CCT (Adjustable.)	4000K/5000K/6000K	
LED Chip	2835	
CRI	Ra70	
Beam Angle	120°	
Dimming	0-10V dimming optional	
Lifespan	LED lumen maintenance: L70> 71000 operation hours@25°C	

### • Environmental - Ambient Temperature

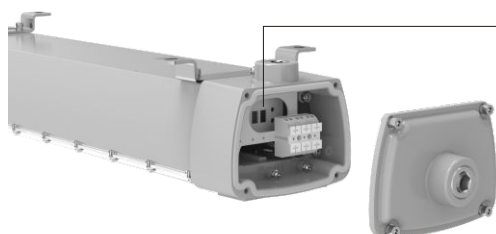
Working Mode	EX-xxxW FLG2 YZDA-A	EX-xxxW FLG4 YZDA-A
Normal	T6: -40°C to +40°C; T5: -40°C to +50°C; T4: -40°C to +55°C	
Emergency	0°C to +55°C	

### • Mechanical

Model	EX-xxxW FLG2 YZDA-A	EX-xxxW FLG4 YZDA-A
Fixture Dimensiion	6.1x5.35x28.35inch	6.1x5.35x49.61inch
Mounting Dimension	19.69x5.71x0.35inch	40.94x5.71x0.35inch
Housing Material	Aluminum	
Diffuser Material	Polycarbonate (PC)	
Chip Lens	Polycarbonate (PC)	
Finish	Corrosion resistant gray finish	
Protection	IP66/IK10/500 hours salt spray	
Hardware	SUS304	
Mounting	Ceiling,Pole,Guide Rail	
Cable Entry	3/4" NPT	
Outlet	1. One wiring access cover with captive screws on both sides. 2. Wiring is not included. It can be customized if required.	
Warranty	5 years	

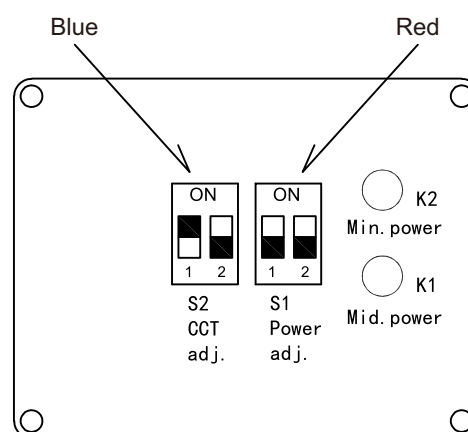
## Power and CCT Adjustable

### Power and CCT Adjuster



Power and CCT Adjuster

- (1)Power Adjuster:  
Connect to the 0/1-10V dimming port of the LED river.
- (2)CCT Adjuster:  
Connect the output voltage of the LED driver: DC20-60V  
LED driver maximum no-load output voltage: 68V max
- The three-gear power setting principle is as follows:  
The first gear is 100%, the second gear is 70-80%, and the third gear is 50-60%. The minimum setting cannot be lower than 50%.

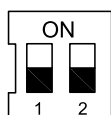


### Operating Instructions

#### S1 DIP switch - Red (S1 Power adj.)

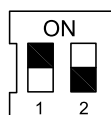
The power adjustment dial switch can be set to three power levels, and the factory default setting can be defined according to order requirements.

- 1.First gear (Max. power), 100% full power.  
Operation instructions: Dial 1 and 2 are both in the OFF position;



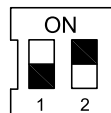
Example: 100W

- 2.Second gear (Mid. power), 70%-80% power, can be set according to the required power.  
Operation instructions: Dial 1 is in the ON position, Dial 2 is in the OFF position;



Example: 80W

- 3.Third gear (Min. power), 50%-60% power, can be set according to the required power.  
Operation instructions: Dial 1 is in the OFF position, Dial 2 is in the ON position;

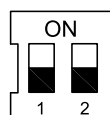


Example: 60W

#### S2 DIP switch - Blue (S2 CCT adj.)

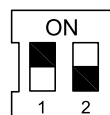
The color temperature dial switch can be set to three levels of color temperature, and the factory default setting can be defined according to order requirements.

- 1.First gear, the cold white temperature gear, for example, 6000K.  
Operation instructions: Dial 1 and 2 are both in the OFF position;



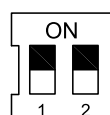
6000K

- 2.Second gear, the neutral temperature gear, for example, 5000K.  
Operation instructions: Dial 1 is in the ON position, and Dial 2 is in the OFF position;

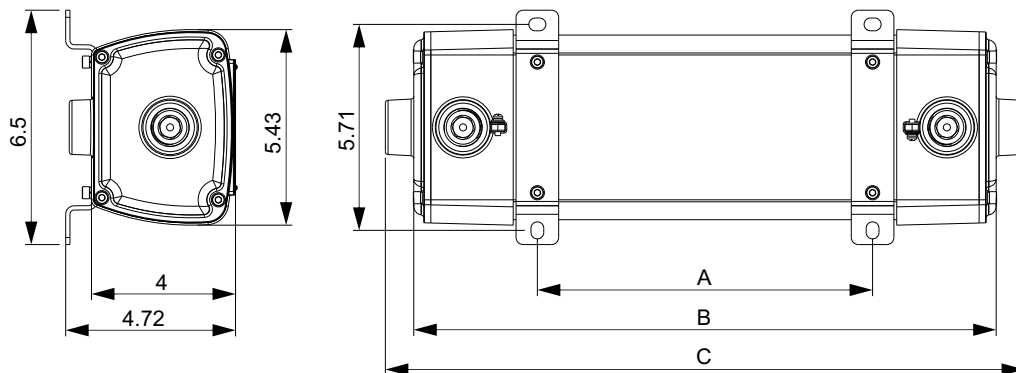


5000K

- 3.Third gear, the warm white temperature gear, for example, 4000K.  
Operation instructions: Dial 1 and 2 are both in the ON position;



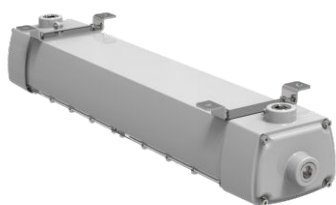
4000K

**Product Dimension** (Unit: inch)

Model	A	B	C
FLFG2	19.69	26.77	28.35
FLFG4	40.94	48.03	49.61

**Mounting Methods and Accessories**

## • Option 1 : Ceiling Mounting



## • Option 2 : Pole Mounting



## • Option 3 : Guide Rail Mounting

