

# CLP-3040

LED Architectural Fixture

DESIGN - QUALITY



Crystal   
Lighting



# CLP-3040

# Area Fixture

CLP-3040 Series LED Area or Flood Fixture, Suitable for Wet locations. Perfect for lighting up Residential Exteriors, Walkways, Entry Ways, Perimeters, Storage Areas, Parking Garages, School Campuses, Industrial & Commercial Spaces, Parking Lots, Recreational Parks. This fixture has a wide light distribution.  
10 year/100,000 hour limited warranty.

### FEATURES

- Energy Savings: Over 66% compared to HID light sources.
- Improved lumen maintenance.
- High efficient Lumiled LED's.
- Operating temperatures: -30°C ~ 60°C.
- Driver: Constant current, 120-277v, 50/60Hz, 480v (Optional).
- Suitable for Wet Locations.
- Options: 0-10 Dimming, Occupancy Sensors, Photocell and Wireless Controls Option.
- Operating Life: >60,000 hours

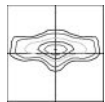


### CONSTRUCTION

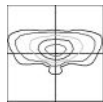
- Housing Heavy-Duty Aluminum Housing.
- 3 Mill Powder Coat Finish, (Various colors available) (Custom).
- Types 2, 3, 4 and 5, Clear Optic.
- Silicone Gasket to prevent leakage and provide IP-66 Rated Product.
- Mounting: Extruded Arm 6", 10", Swivel Bracket, Slip Fitter, 6" Arm Wall Mount.



### OPTIC DISTRIBUTION



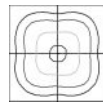
TYPE 2 (T2)



TYPE 3 (T3)



TYPE 4 (T4)



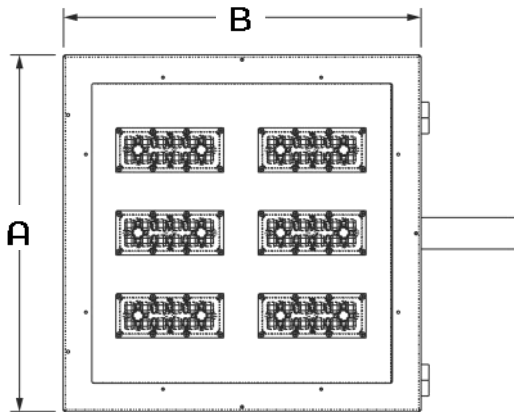
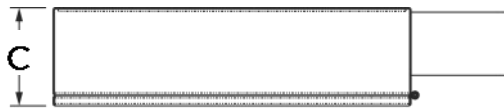
TYPE 5 (T5)



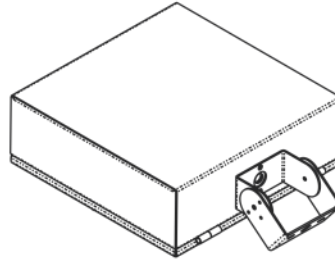
Example: (CLP-3040S-10W-T5-30K-MV-BLK-EA6-OCC)

Cat#	Wattage	Light Dist.	Color Temp.	Voltage	Finish	Mounting	Options
CLP-3040S	10W (10CLED) 20W (20CLED) 30W (30CLED) 40W (40CLED)	Type 2 (T2) Type 3 (T3)	3000K (30K) 4000K (40K)	120-277V(MV) 377V (347) 480V (480)	Bronze (BRZ) Gray (GRY)	6" Extruded Arm (EA6) 10" Extruded Arm (EA10)	Motion Sensor (OCC) Button Photo Cell (PC)
CLP3040M	60W (60CLED) 80W (80CLED) 100W (100CLED) 120W (120CLED) 150W (150CLED)	Type 4 (T4) Type 5 (T5)	5000K (50K)		Black (BLK) White (WH) Custom (CST)	*Slip Fitter (SF) *Swivel Bracket (SB) Spider Mount (SM)	Emergency Battery (EMR) House Side Shield (HSS)
CLP-3040L	200W (200CLED) 250W (250CLED) 300W (300CLED)					Yoke Mount (YM) 6" Extruded Arm Wall Mount (6EAWM)	Wireless Control (WC)

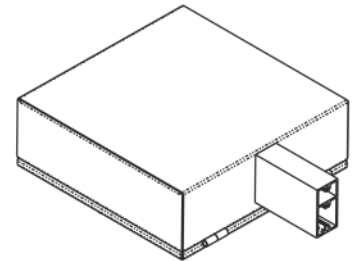
# CLP-3040



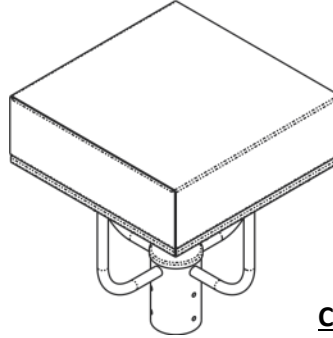
**CLP-3040-SB**



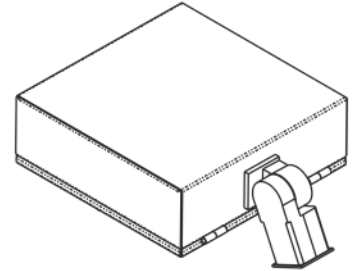
**CLP-3040-EA6 /EA10**



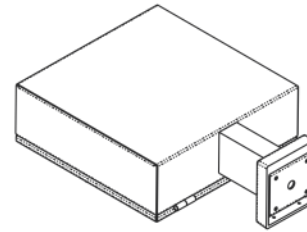
**CLP-3040-SM**



**CLP-3040-SF**



**CLP-3040-EA6WM**



Shade Dimensions				EPA
CAT#	A	B	C	
CLP-3040S	12" 1/2	12" 1/2	5. 1/4	.45
CLP-3040M	16" 1/4	16" 1/4	5" 1/2	.62
CLP-3040L	22" 5/8	22" 5/8	6" 1/4	.98

Cat#:	Input	Lumen	LPW	Color Temp	CRI	Rated Life	Input	Input	HID
CLP-3040S	10W	1938	189	5000K	70+	>200,000	120-277V	50/60HZ	35W MH
CLP-3040S	20W	3650	182	5000K	70+	>200,000	120-277V	50/60HZ	50W HPS
CLP-3040S	30W	5222	174	5000K	70+	>200,000	120-277V	50/60HZ	70W PSMH
CLP-3040S	40W	6492	162	5000K	70+	>200,000	120-277V	50/60HZ	150W HPS
CLP-3040M	50W	7320	146	5000K	70+	>200,000	120-277V	50/60HZ	150W HPS
CLP-3040M	60W	8320	136	5000K	70+	>200,000	120-277V	50/60HZ	250W HPS
CLP-3040M	80W	10340	129	5000K	70+	>200,000	120-277V	50/60HZ	250W MH
CLP-3040M	100W	14640	146	5000K	70+	>200,000	120-277V	50/60HZ	400W PSMH
CLP-3040M	120W	16984	141	5000K	70+	>200,000	120-277V	50/60HZ	400W HPS
CLP-3040M	150W	20680	137	5000K	70+	>200,000	120-277V	50/60HZ	400W HPS
CLP-3040L	200W	30020	150	5000K	70+	>200,000	120-277V	50/60HZ	750W PSMH
CLP-3040L	250W	36600	146	5000K	70+	>200,000	120-277V	50/60HZ	1000W MH
CLP-3040L	300W	43620	145	5000K	70+	>200,000	120-277V	50/60HZ	1000W HPS

All products are proudly manufactured and/or assembled in the USA