

HIGH TEMPERATURE HIGH BAY

Application :
Steel Smelting Plants, Injection plant,
Die casting plant, Ceramic factory, Glass factory,
Power plant, Manufacturing Plants & Warehouses
Farms and Industrial Installations.

- Valid Over The Entire Temperature Range From $-40^{\circ}\text{C} \sim +60^{\circ}\text{C}$
- Excellent Lighting Efficacy, Up To 140 lm/W
- AC100-277V, 50/60Hz



HBL150W-02-G4

P5



P6



HIGH TEMPERATURE HIGH BAY

Application :
Steel Smelting Plants, Injection plant,
Die casting plant, Ceramic factory, Glass factory,
Power plant, Manufacturing Plants & Warehouses
Farms and Industrial Installations.



HBL200W-02-FA



- Valid Over The Entire Temperature Range From $-40^{\circ}\text{C} \sim +65^{\circ}\text{C}$
- Excellent Lighting Efficacy, Up To 135 lm/W
- AC100-277V, 50/60Hz

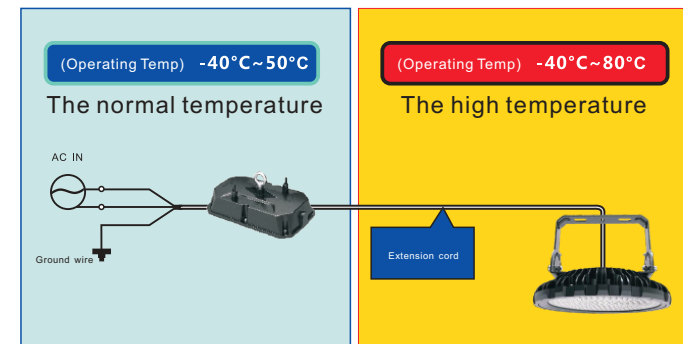
HIGH TEMPERATURE HIGH BAY

Application :
Steel Smelting Plants, Injection plant,
Die casting plant, Ceramic factory, Glass factory,
Power plant, Manufacturing Plants & Warehouses
Farms and Industrial Installations.

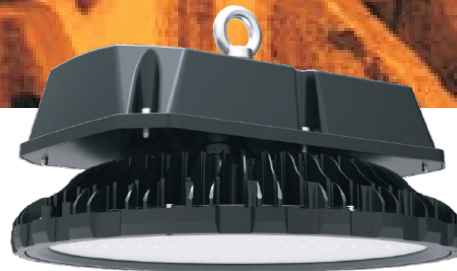
- Valid Over The Entire Temperature Range From $-40^{\circ}\text{C} \sim +80^{\circ}\text{C}$
- Excellent Lighting Efficacy, Up To 135 lm/W
- AC100-277V, 50/60Hz



HBL150W-02-FA

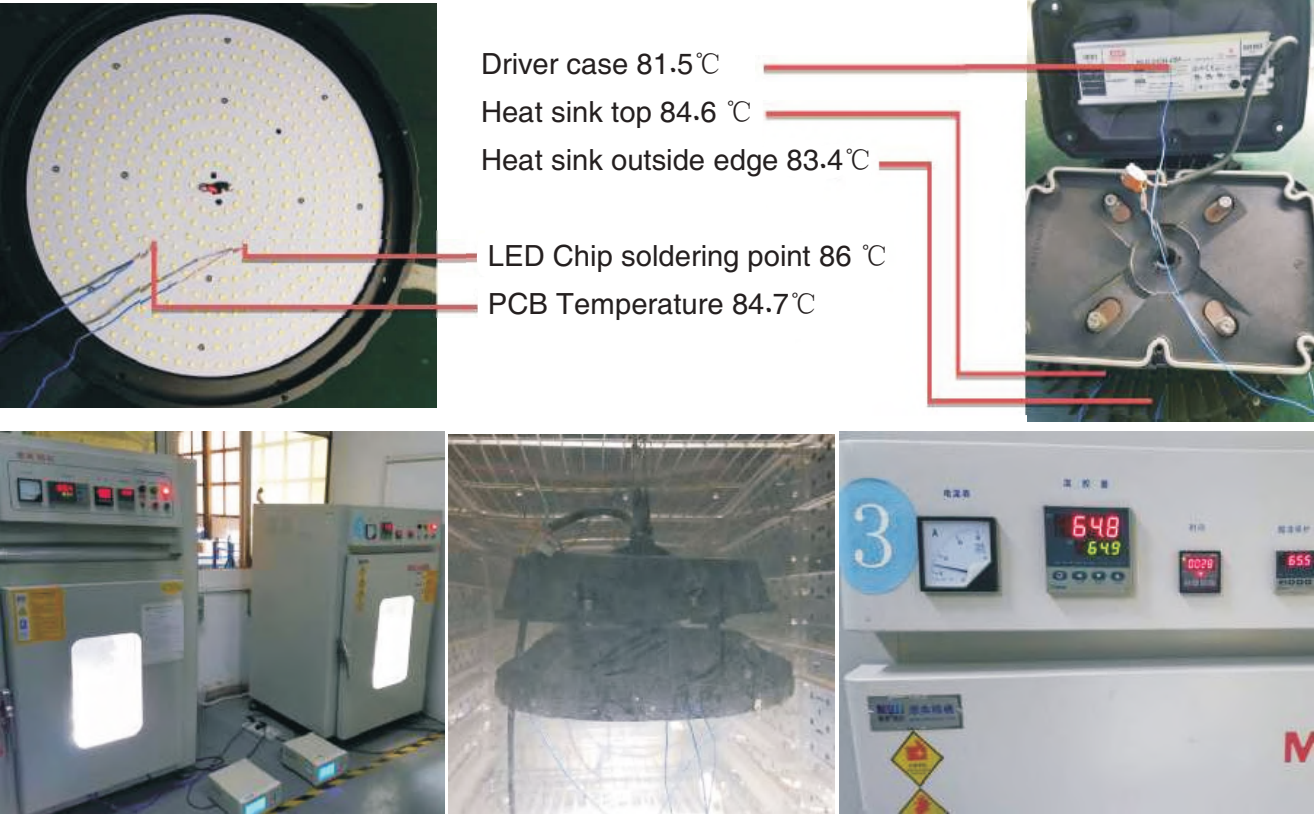


HIGH TEMPERATURE HIGH BAY



Item	HBL150W-02-G4	HBL200W-02-FA	HBL150W-02-FA
Power	150W	200W	150W
Voltage	AC100-277V 50/60Hz	AC100-277V 50/60Hz	AC100-277V 50/60Hz
Power Factor	>0.9	>0.9	>0.9
Luminous Efficacy	140 lm/W	135 lm/W	135 lm/W
Leds	SMD 3030	SMD 3030	SMD 3030
Beam Angle	60°/90°/120°	50°/90°/120°	50°/90°/120°
CRI	>80	>80	>80
CCT	3000K/4000K/5000K/5700K	3000K/4000K/5000K/5700K	3000K/4000K/5000K/5700K
Operating Temp.	-40℃~+60℃	-40℃~+65℃	-40℃~+80℃

Thermal test report(Ambient Temperature 65.5℃)



Below is the LED Light Sources test data based on 12000 hours IESNA LM-80 test.

Sample Set

Data Set 1: 85°C, 200mA

- Number of Units: 25
- Case Temperature: >83°C
- Ambient Temperature: >80°C
- Life Test Drive Current: 200mA
- Measurement Current: 200mA

Data Set 2: 105°C, 200mA

- Number of Units: 25
- Case Temperature: >103°C
- Ambient Temperature: >100°C
- Life Test Drive Current: 200mA
- Measurement Current: 200mA

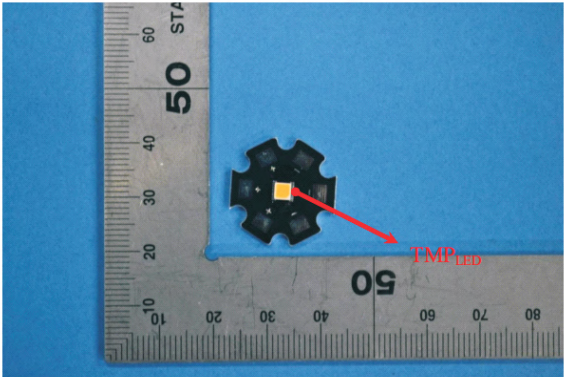
Data Set 3: 120°C, 200mA

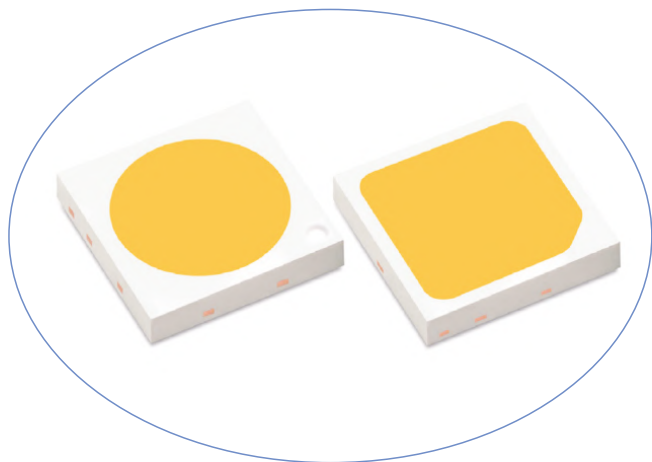
- Number of Units: 25
- Case Temperature: >118°C
- Ambient Temperature: >115°C
- Life Test Drive Current: 200mA

Summary of Test Result

Data Set:	Sample Size	Failures Observed:	Test Interval	Test Duration	Reported TM-21 L ₇₀ Lifetime
1	25	0	1000	12000	>72000hours
2	25	0	1000	12000	>72000hours
3	25	0	1000	12000	>72000hours

EUT Photo

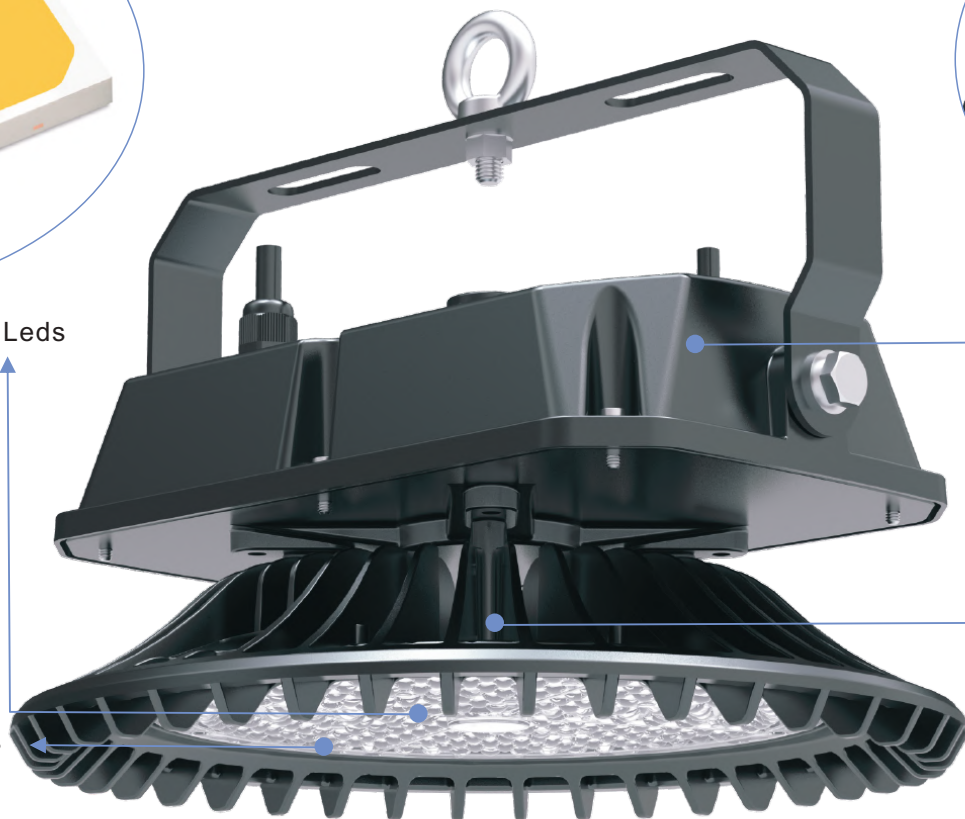




High efficiency and Energy saving Leds
Long Lifespan > 50000 Hours

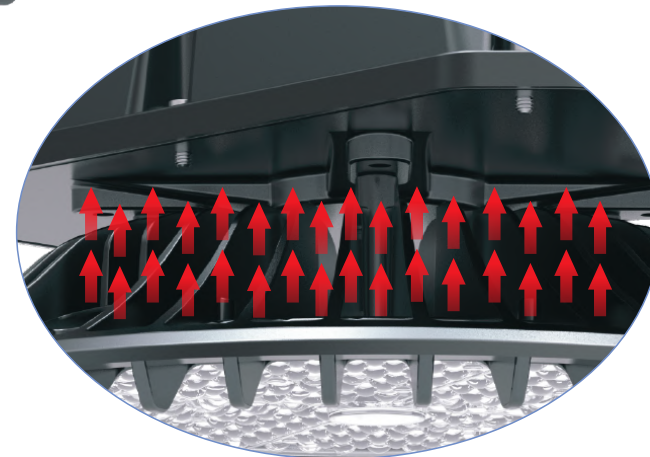
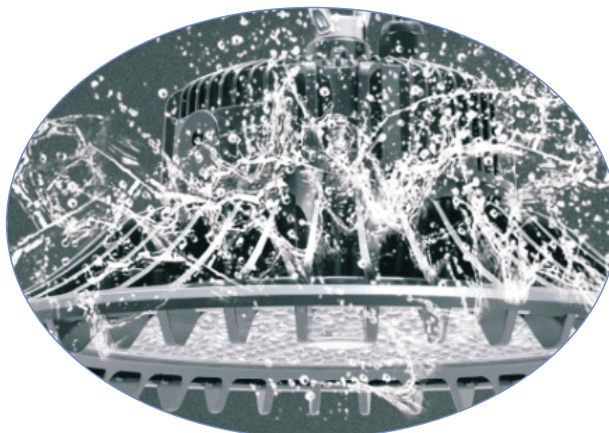
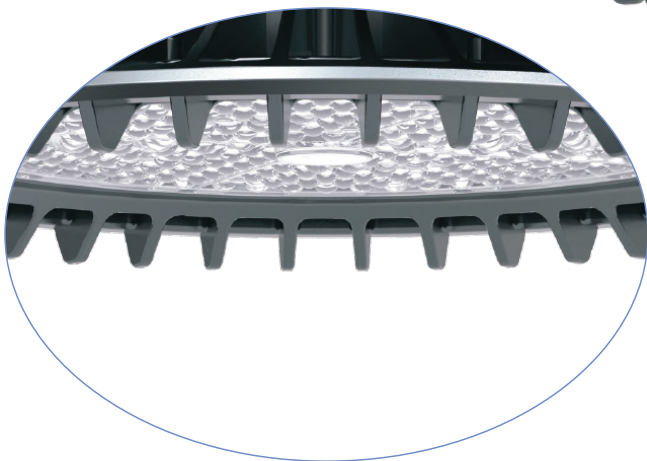


Independent Modular design of the driver box
Better heat dissipation Perfect waterproof performance



Lens Optional — 50° / 60° / 90° / 120°

Al1070 Cold forging Aluminum
Housing / ADC12 Die Cast Housing
With Nicely 3D Heat Dissipation
Stronger corrosion resistance,
For harsh outdoor environment



IP65