

ATG's DUO Linear Stairwell fixtures, available in 2', 4', and 8' lengths with selectable wattage and CCT settings, effectively illuminate stairwells and passageways in commercial and industrial applications. The LSW provides an appealing design while offering the latest, high performance components and options such as a concealed motion sensor and emergency battery backup.

Product Specs

Input Voltage (VAC)	100-277V @ 2FT & 4FT / 100-347V @ 8FT
Wattage [†]	Selectable [†]
CCT (K)	3000, 4000, 5000 [*] Selectable
L70 Hrs per TM21-2008: REPORTED (Calculated)	See Page 3
Limited Warranty	10 Years
CRI	80+
Finish Color	White (JA01WZ)
Housing	Fabricated Metal, post painted; extruded diffuser
Optic Diffuser	Frosted (Standard)
Dimming	0-10V Dimming (0% to 100%)
Operating Temperature	-13° F to 104° F (-25°C to +40°C)
IP Rating	IP20
Power Cable	4' - 18/3 SO cord (Standard)

[†]Wattage range dependent on length, see ordering info

Project Details		Type
Project:		
Product:		
Prepared by:		
Notes:		

APPLICATIONS

Application	Stairwell / Hallway
Fixture Type	Linear Wall / Corner Mount
Office and Meeting Space	X
Educational Facilities	X
Industrial and Distribution	X
Hospital and Healthcare Facilities	X
Garage and Parking Lot	
Parks and Recreation	

ENABLED:	 Bluetooth [®]	 DLC	 Tru Blu	 SILVAIR
CERTIFICATIONS AND COMPATIBILITIES				




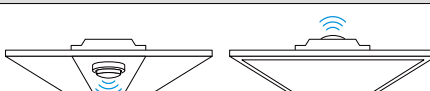
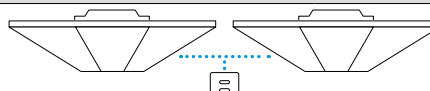
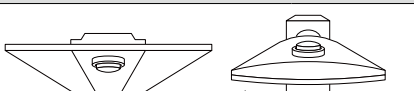











Order Format

Example: LSW-2FT-30-T1-F-SL

Series	Length	Wattage	Selectable CCT	Lens	Options
LSW	2FT	30	30W / 20W / 15W / 10W	T1=3000K/4000K/5000K Selectable	F=Frosted
	4FT	40	40W / 25W / 18W / 12W		See table on Page 2
	8FT±	80	80W / 70W / 60W / 45W		

INFORMATION FOR LIGHTING CONTROLS APPLICATIONS

LLLC - Luminaire Level Lighting Control (Mesh Network)	LALC - Local Area Lighting Control (Circuit Level)	SAFC - Stand Alone Fixture Control
		
		
 Bluetooth [®]  DLC  Tru Blu  SILVAIR	 Bluetooth [®]  DLC  Tru Blu  SILVAIR	
Control-luminaire groupings typified by needs to a space or user, coordinated via wireless signals, executed at each luminaire. LLLC and networked solutions are highlighted by ability to operate independently or in mesh coordination. Note: they are not related by a power circuit.	LALC solutions are highlighted by their "many to one" arrangements. This can save on hardware costs with minimal labor increases. Characteristically they are linked (related) by power or control wires.	SALC solutions have sensors that typically only detect and individually control a single fixture. Characteristically they have A) 1:1 sensor to fixture relationship; B) sensor integrally wired and/or affixed to fixture; C) Likely to have physical settings on the sensor, but may have hand held program tool.

CONTROLS, OPTIONS, AND ACCESSORIES		↓ CLICKABLE LINKS ↓
LLLC - LUMINAIRE LEVEL LIGHTING CONTROL (MESH NETWORK)		
ATG Code	Description	Model Number
W3	Bi-Level Microwave Remote Mount Occupancy Sensor	PSC-BL-M-RT-DC0-BLE-SR
W13	Bi-Level PIR Occupancy Sensor, KO Mount, 120/277VAc	PSC-BL-I-FM-110-BLE-SR
LALC - LOCAL AREA LIGHTING CONTROL (CIRCUIT LEVEL)		
ATG Code	Description	Model Number
W7	Wireless Dimmer Switch	PSC-DM-WS-100-BLE-SR
W8	Wireless Dimming Occupancy Switch	PSC-DM-I-WS-100-BLE-SR
W9	12V Wireless Fixture Controller	PSC-WCM-50-DC0-BLE-SR
W15	Ceiling Mount PIR Occupancy Sensor	PSC-ND-I-CM-DC-BLE-SR
P5	Room controller, KO mounted, 120-277In / 12VC and 0-10V out / 16A	PSC-WCM-450-BLE-SR
SAFC - STAND ALONE FIXTURE CONTROL		
ATG Code	Description	Model Number
SL	Occupancy and Daylight Sensor, 12V, Microwave	HNS111
RH	Hand Held Programmer for HNS111	IR22
—	Wall Dimmer Switch, Leviton Illumatech, 0-10V, 120/277VAc	IP710-LFZ
—	Wall Dimmer Switch, Leviton Illumatech, 0-10V, 120/277VAc, Lit	IP710-DLZ
—	Wall Switch, Lutron Diva, Paddle-Slider, 0-10V, 120/277VAc, 8A	DVSTV-WH
—	Wall Switch, Lutron Diva, Paddle-Slider, 0-10V, 120/277VAc, 3.75A	DVSTV-453PH-WH
ACCESSORIES		
ATG Code	Description	Model Number
EC	Emergency Driver & SPLIT battery; 120-277/347VAc in; 8W @ 25-50Vdc out	EMB08YY-050
EE	Emergency Driver & SPLIT battery; 120-277/347VAc in; 15W @ 25-50Vdc out	EMB15YY-050

*Leviton, Lutron wall switches listed for compatibility only

Model Number	Nominal Watts(W)	3000K			4000K			5000K		
		Watts (W)	Efficacy (LPW)	Lumens	Watts (W)	Efficacy (LPW)	Lumens	Watts (W)	Efficacy (LPW)	Lumens
LSW-2FT-30-T1-F-SL	10	9.2	128.1	1179	9.2	140.2	1297	9.2	132.0	1214
	15	15.3	129.8	1986	15.3	142.8	2184	15.3	133.7	2045
	20	19.4	127.1	2466	19.4	139.8	2712	19.4	130.9	2540
	30	29.8	124.3	3704	29.8	136.6	4071	29.8	127.9	3812
LSW-4FT-40-T1-F-SL	12	11.6	129.3	1500	11.6	142.2	1650	11.6	133.2	1545
	18	18.1	130.9	2368	18.1	143.9	2605	18.1	134.8	2439
	25	25.0	128.1	3203	25.0	140.9	3523	25.0	132.0	3299
	40	40.5	125.2	5073	40.5	137.7	5578	40.5	129.0	5223
LSW-8FT-80-T1-F-SL	45	47.7	126.3	6024	47.7	138.9	6627	47.7	130.1	6205
	60	62.9	128.2	8063	62.9	141.0	8869	62.9	132.0	8304
	70	73.4	125.8	9234	73.4	138.4	10157	73.4	129.6	9511
	80	84.1	123.3	10377	84.1	135.6	11406	84.1	127.0	10681

* Per DLC policy, for Field Adjustable Lumen Output (FALO) product, only worst case data (lowest efficacy and lumen output) is shown on QPL as DLC Reported Data

* 3000K data for each wattage selection is based on DLC QPL, all others are extrapolated data calculated with certain factor: 1.1 (4000K) and 1.03 (5000K)

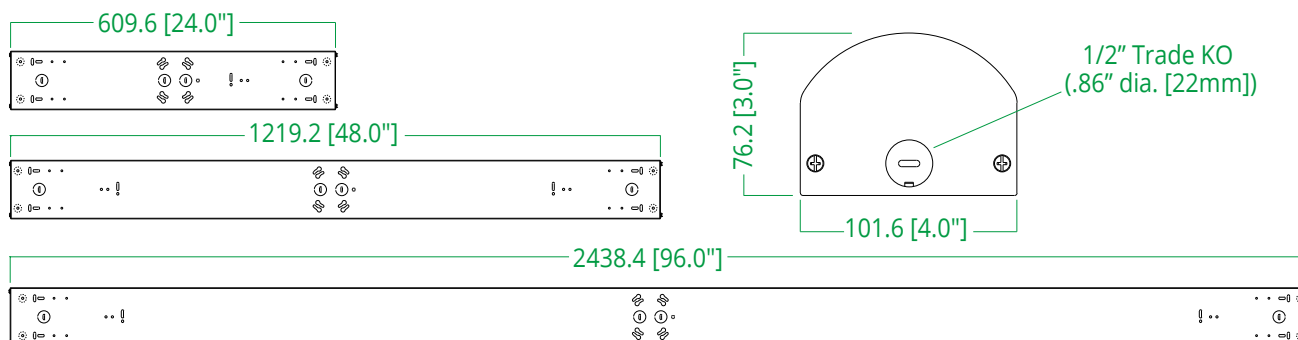
PROJECTED LUMEN MAINTENANCE

Model Number	Ambient Test Temp	Reported Hrs ±	0 Hrs	25,000 Hrs	TM21-11 ± L90 67,000	50,000 Hrs	100,000 Hrs	L70 Hrs ±
LSW-4FT-40W	25° C / 77° F	> 36,000	1.0	.9662	.90	.926	.85	216,000

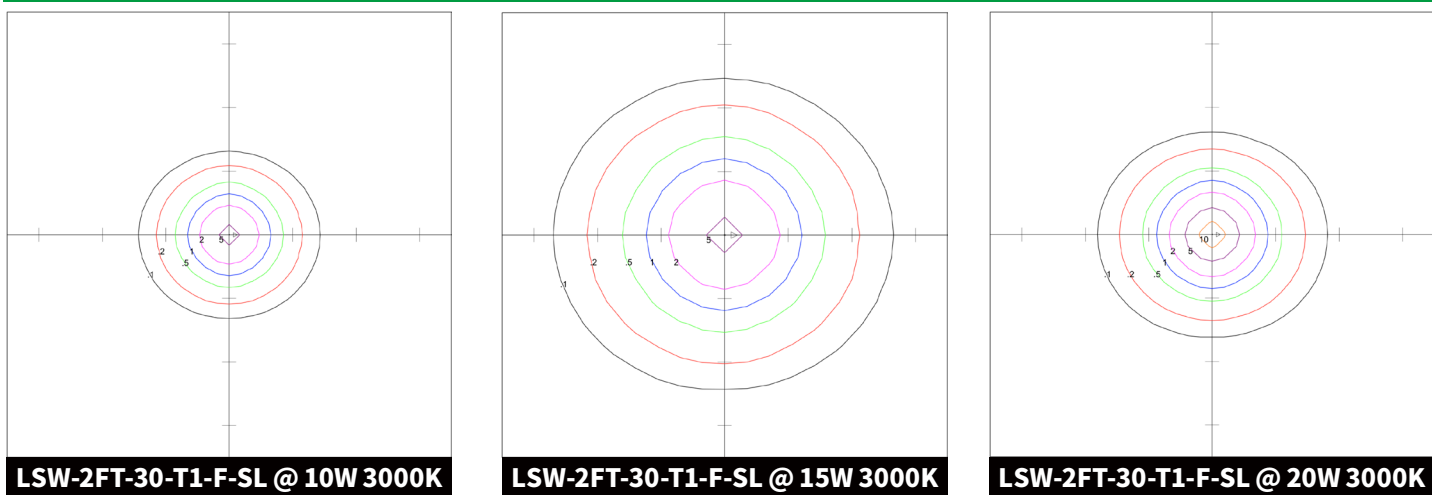
† Projected per IESNA TM-21-11

± DLC Reported Hours = Max 6x LM-80 tested duration (Hongli Zhihui Group Co., Ltd. PU2835DW-S1-08-PCT-HR3 @ 6,000hrs)

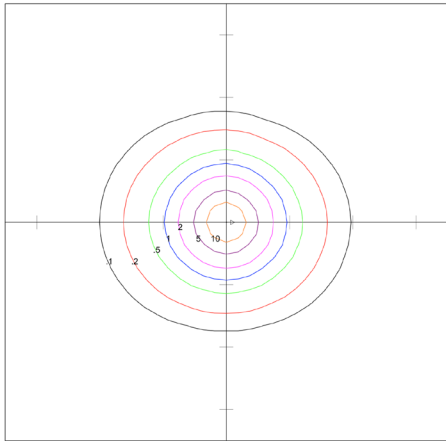
DIMENSIONS



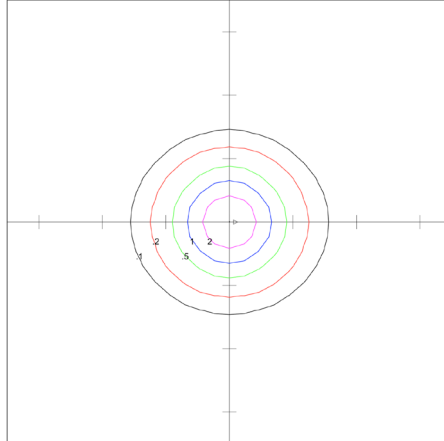
PHOTOMETRICS



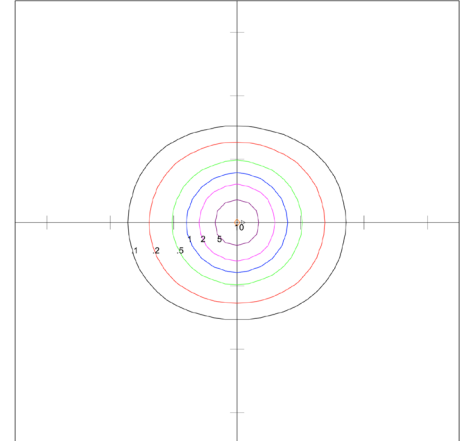
PHOTOMETRICS



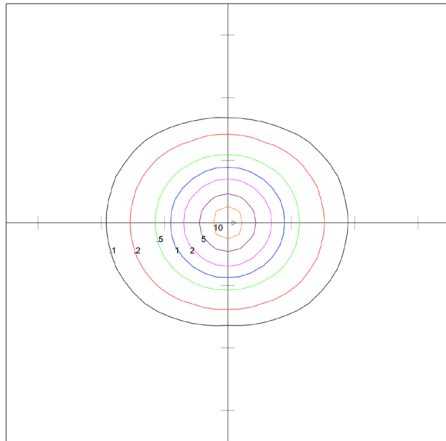
LSW-2FT-30-T1-F-SL @ 30W 3000K



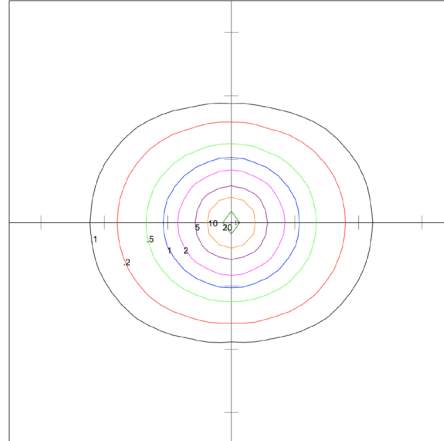
LSW-4FT-40-T1-F-SL @ 12W 3000K



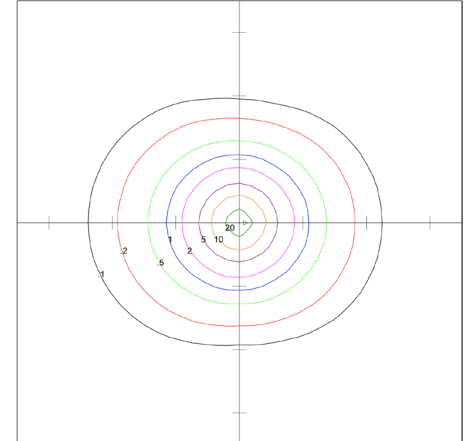
LSW-4FT-40-T1-F-SL @ 18W 3000K



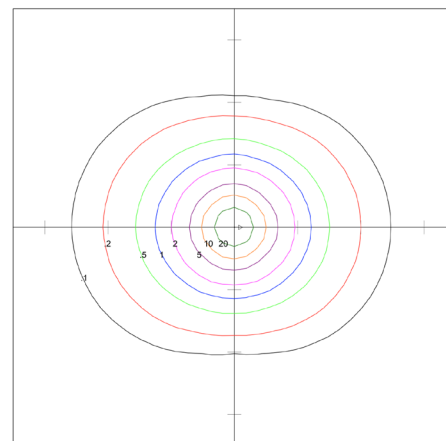
LSW-4FT-40-T1-F-SL @ 25W 3000K



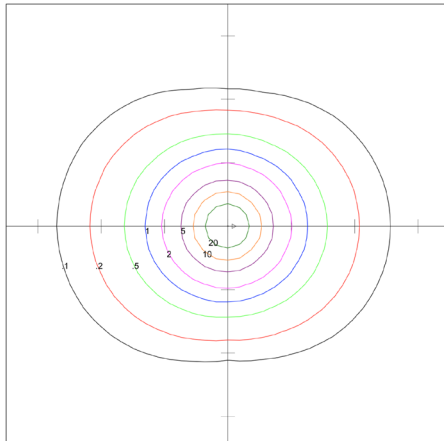
LSW-4FT-40-T1-F-SL @ 40W 3000K



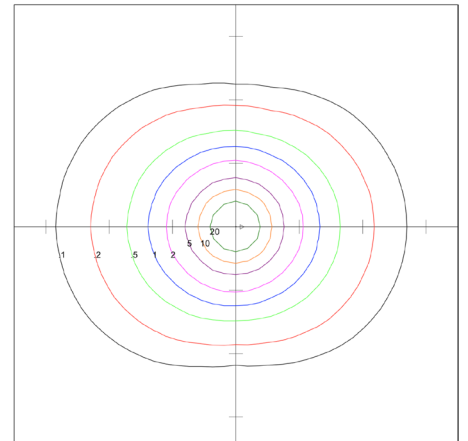
LSW-8FT-80-T1-F-SL @ 45W 3000K



LSW-8FT-80-T1-F-SL @ 60W 3000K



LSW-8FT-80-T1-F-SL @ 70W 3000K



LSW-8FT-80-T1-F-SL @ 80W 3000K

Microwave Motion Sensor



Settings (Remote control IR22)



Permanent ON / OFF function

Press "ON/OFF" button, fixture goes to permanent on or permanent off mode, sensor is disabled.

* press "Auto", "Reset" or "Ambient learn" to quit this mode.



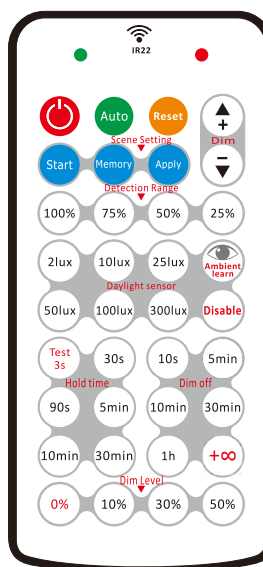
Sensor mode

Press "Auto" button, the sensor starts to work and all settings remain the same as the latest status before the light was switched on/off.



Reset function

Press "Reset" button, all settings go back to factory default settings.



IR22

Note:

The buzzer short beeps once when sensor successfully receives RC signal after pressing any buttons expect for "APPLY".

When "twilight level" set at 0%, it becomes ON/OFF control.

* Factory default settings--

Sensitivity=100%
Daylight sensor=disable
Hold time=90s
Twilight time=5min
Twilight level=10%

Start Memory Apply One-key memory commissioning

Start

Step 1 Long press “Start” button for 2s till green LED permanent on, then input all desired settings by pressing the buttons in each function zone, the green LED will flicker once to indicate the operation success.

*After 2s, start to input the parameters, interval time each function zone button will be within 10s. Otherwise, need re-operate step 1 for memory scene.

Memory

Step 2 Press “Memory” button to memorize all settings parameters.
Green LED will flicker ONCE to indicate the operation success.

Apply

Step 3 Press “Apply” button to copy the same settings to other sensors, point the remote control to the receiving sensor for min. 2s. Red LED will flicker to indicate the operation success, the receiving sensor will buzz also to indicate success receipt.

e.g., setting detection range 50%, daylight threshold 200lux, hold-time 30s, dim off 1h, dim level 10%, the steps should be:

1. press “start” button for 2s, choose “50%”, “200lux”, “30s”, “1h”, “10%” function zone button.
2. press “memory” button.
3. press “apply” to other sensors, then all of them will share the same settings.



Power Dim +/-

Press “Power Dim +” button to dim up the power step by step 20%-40%-60%-80%-100%. Press “Power Dim -” button to dim down the power step by step 100%-80%-60%-40%-20%.



Disable

Press “Disable” button, the daylight sensor will be disabled, the motion sensor will work always, even in daytime.



Test mode

“Test mode” is for testing purpose only, for users to check the functionality and choose the desired detection range. The sensor goes to test mode automatically after pressing this button.

Users can quit this mode by pressing “ON/OFF”, “Reset”, or any button of “Hold time”. The sensor settings are changed accordingly.

* Test mode defaulted settings--

Daylight sensor=disable
Hold time=3s
Twilight time=N/A
Twilight level=N/A

In this mode, when used for on/off control, after motion detected, sensor enters into a cycle of 3s on and 2s off.
In this mode, when used for tri-level dimming control, after motion detected, sensor enters into a cycle of 3s on and 2s off (0.5s soft off + 1.5s off).



Ambient learn

Press “Ambient learn” button, the latest surrounding lux value overwrites previous lux value learned, and set as the daylight threshold. This feature enables the fixture to function well in any real application circumstance.



DUO STAIRWELL FIXTURE

Selectable Linear Fixture

LSW

10 Year Warranty

ATG Electronics®

Industry Leading 10 Year Limited Warranty

For North American LED Lighting Fixtures

ATG Electronics warrants to the original purchaser of ATG Electronics Domestic LED products listed above that were manufactured for which the ATG Electronics Spec Sheet located on our website contains the words "10 year limited warranty" that, subject to the below terms and conditions of this warranty, when such LED products are properly installed they will comply with ATG Electronics published product specifications for such products and will be free from material defects in material and workmanship for a period of ten (10) years from the date of sale by ATG Electronics, or, if lesser, 50,000 hours of operation (at an average of 13.6 hours per day operation). The LED arrays in the Product(s) will be considered defective in material or workmanship only if a total of 15% or more of the individual light emitting diodes in the Product(s) fail to illuminate.

The above express limited warranty is extended by ATG Electronics® only to the original or first end-user purchaser and only for the original installed location. This warranty only applies to products purchased after June 1, 2017. This warranty is non-transferrable, whether by assignment or operation of law. The original purchaser must provide warranty claims to ATG Electronics within the warranty period promptly upon discovery and in accordance with ATG Electronics Return and Repair Procedures as outlined within this document.

Should any defects be found by ATG Electronics upon its inspection of the properly returned product, ATG Electronics sole responsibility and liability under this warranty will be, at its option, to either repair or replace the defective part or parts or else make available a new replacement unit that will provide equal or better performance. All decisions regarding the existence or non-existence of defects or otherwise affecting the warranty shall be made by ATG ELECTRONICS and shall be final and binding on all parties. Where a defective LED product is replaced under this warranty, the balance of the original warranty period shall remain effective.

Conditions and Exclusions

This warranty is conditioned upon proper installation, use and maintenance. This warranty will automatically become null and void and shall not be applicable to any LED fixture which (i) has not been timely paid for, (ii) is not installed and operated in accordance with the current edition of The National Electric Code (NEC), the Standards for Safety of Underwriters' Laboratory, Inc. (UL) or with ATG Electronics instructions and guidelines, (iii) has been moved from its original installation, (iv) has been installed within an area that has exposure to sulfur or any area with high acidic compounds in use, (v) has been operated in an ambient temperature or humidity that is higher than 35 degrees Celsius, (vi) has been subjected to a lightning strike, power surge or overvoltage condition, (vii) has its LED Board subjected to static electricity due to failure to discharge same prior to connecting or disconnecting the lead from the LED board, (viii) was not installed and/or operated in accordance with ATG Electronics instructions and guidelines, (ix) has been mishandled, misused, abused, tampered with, modified or altered by anyone other than ATG ELECTRONICS, (x) has been subjected to abnormal stresses and operating conditions, or (xi) has been operated without overvoltage and lightning protection devices in place.

Limitations

Disclaimers & Limitations of Liability

The foregoing warranty is exclusive of all other statutory, written or oral warranties and no other warranties of any kind, statutory, by operation of law or course of performance, or otherwise, are given, herein expressed or otherwise received. EXCEPT AS EXPRESSLY PROVIDED ABOVE, ATG ELECTRONICS DISCLAIMS ALL REPRESENTATIONS, WARRANTIES AND CONDITIONS OF ANY KIND, EXPRESS OR IMPLIED, REGARDING THE LED PRODUCTS AND ITS SERVICES, INCLUDING, WITHOUT LIMITATION, THE IMPLIED WARRANTIES OF MERCHANTABILITY AND FITNESS FOR A PARTICULAR USE OR PURPOSE.

LIMITATION OF LIABILITY. Other than the obligation to repair or replace as provided above, ATG Electronics shall have no liability for any losses, expenses or damages as a result of the installation, use, inability to use, removal or replacement of any LED product. ATG Electronics will not under any circumstances whether as a result of breach of contract, breach of warranty, tort, strict liability or otherwise be liable for consequential, incidental, special or exemplary damages including but not limited to, loss of profits or revenues, loss of any other goods or associated equipment or damage to any associated equipment, cost of capital, cost of substitute products, facilities or services, down time cost or claims of claimant's customers. ATG Electronics liability on any claim of any kind for any loss or damages arising out of, resulting from or concerning any LED product, any aspect of this warranty or for any products or services furnished hereunder shall not exceed the price of the fixture which gives rise to the claim.

Return and Repair Procedures

All warranty requests and or questions are to be directed to ATG Electronics Customer Service Department (CSD) at 888-618-7298. If deemed necessary, the CSD will issue a Returned Merchandise Authorization (RMA) number which must be included on both the packing slip of the component or fixture being returned and on the outside of the box. You must include your name and contact information, including your email address, on the packing slip so that we can contact you easily. Each component or fixture must be packaged very carefully and properly so as to prevent damages in shipment and must be shipped freight prepaid. Please obtain a proof of delivery to ensure that the material is received.

Once the component or fixture has been received and tested, an evaluation report will be provided to the end user via email. This report will clarify the following:

- A) The component / fixture is covered under the warranty policy and will either be repaired or replaced.
- B) The component / fixture is not covered under the warranty policy and the reason for this determination.

If ATG ELECTRONICS determines that the component or fixture is covered under the warranty, then the appropriate repairs will be started or a replacement fixture will be manufactured and shipped. Please note that in the event the returned component or fixture is found not to be covered under this warranty, you may be subject to a labor charge for the evaluation process and will be responsible for all return shipping charges and fees. For components and fixtures determined to be covered under this warranty prior to the first anniversary of the Sale Date, the repaired or replacement component or fixture will be returned to you at no charge. You will be responsible for all other shipping charges.

No Labor Reimbursement

All components and fixtures determined to be covered by this warranty as provided above, will be repaired or replaced at no charge to the customer, however, except as expressly provided above with respect to recessed and linear fixtures during the first year, the customer must hire and pay for an electrician to remove and reinstall such components and fixtures. No labor costs will be covered for the removal or reinstallation of any components or fixtures. The warranty does not cover modifications, repairs or replacements, or the related labor or materials costs, that may be necessary to facilities or third party products in connection with the removal, repair, or replacement of any LED product under this warranty.