

**LF-72 LED Portable
Helipad Landing Floodlight**



The LF-72 Helipad floodlights utilizes state-of-the-art optical design to achieve smaller, efficient and lower consumption. Used for night operation. Shall be located so as to avoid glare to pilots in flight or personnel working on the area. Floodlighting system ensure the helipad surface illumination not less than 10 Lux.

Manufacture Standard:

- ICAO Annex 14, Volume II, 4th Edition, July, 2013
- FAA AC150/5390-2C

Applications:

- Elevated mounted illumintaed TLOF/FATO area.
- Winching areas.
- Parking areas.

Why LF-72:

- Portable and easy transportation saves freight cost.
- 72Watts rated power, efficient luminous.
- Fixture can be used with 100V~265V AC, 50Hz or 60Hz.
- Low profile, less than 20cm in height after installations.
- Lens hood reduce the glare to pilots.

Technical Features:

- Operation voltage:100V~265V AC,50HZ/60HZ.
- Lamp:100,000 hours LED lifespan.
- Rated power: 72Watts.

Optical:

- Color:White steady burning.
- Light Efficiency:102.82lm/W.

Environmental:

- Operating: -40°C to 60 °C.
- Wind speed: 80m/s.

Construction&Physical:

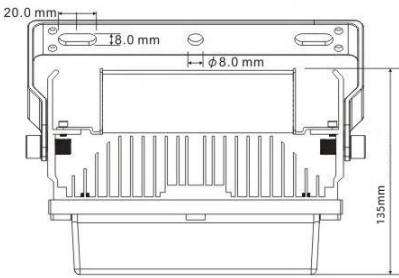
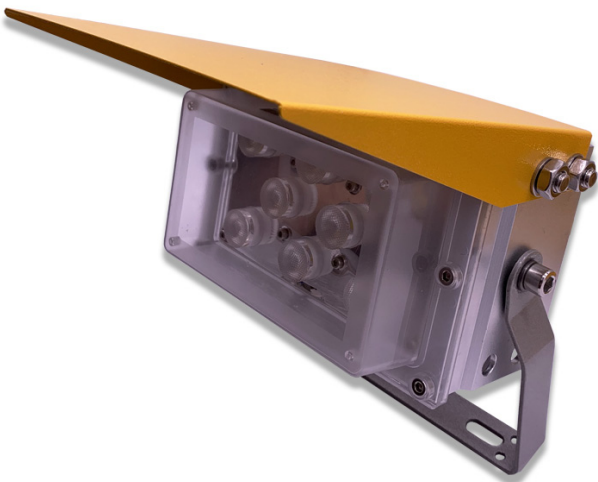
- Housing: aluminum alloy&304 stainless steel.
- Lamp Cover: Impact resistant polycarbonate.
- Size:191mm*135mm*151mm.
- Mounting: $\phi 8\text{mm} \times 3$
- IP rating: IP65.
- Weight: 2KG.

Ordering Code:

Type	Output	Lamp	Lamp Hood
LF72	W: White	AC: 100/265V ¹ DC: 10/30V ²	Default included

¹ Operation at AC100V to 265V, 50Hz or 60Hz.

² Operation at DC10V to 30V, 50Hz or 60Hz.



Drawing: (Without hood)