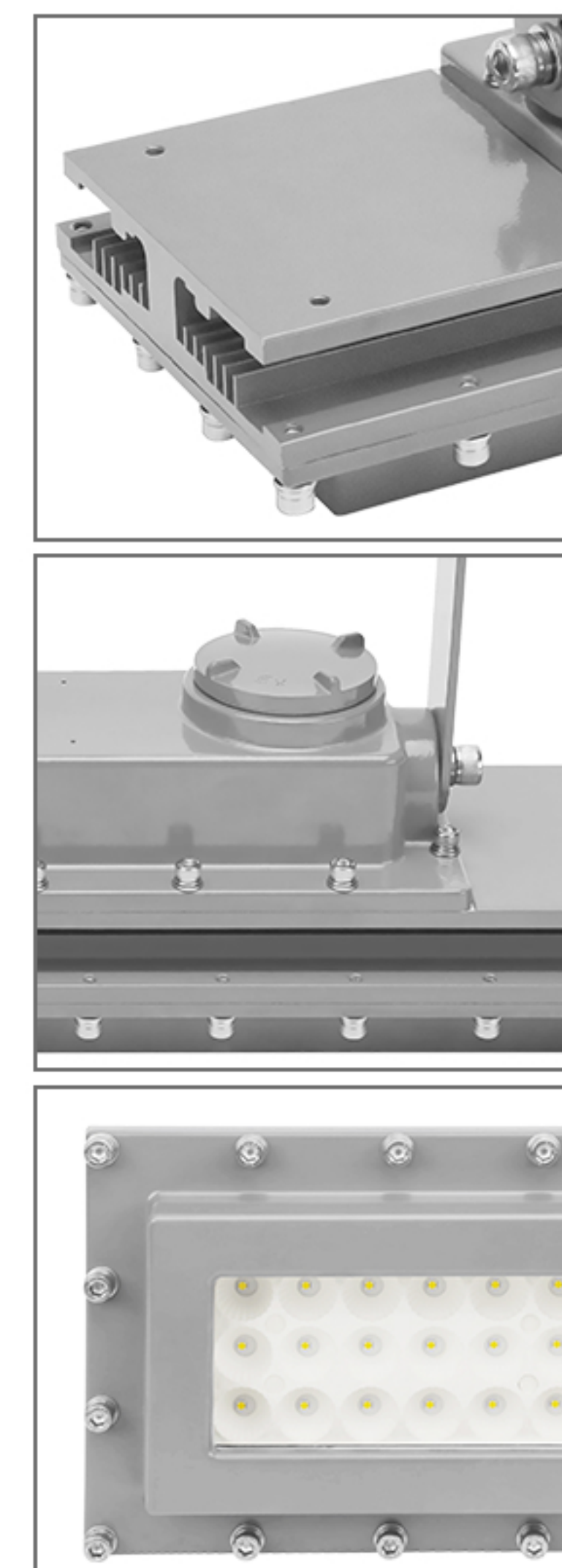
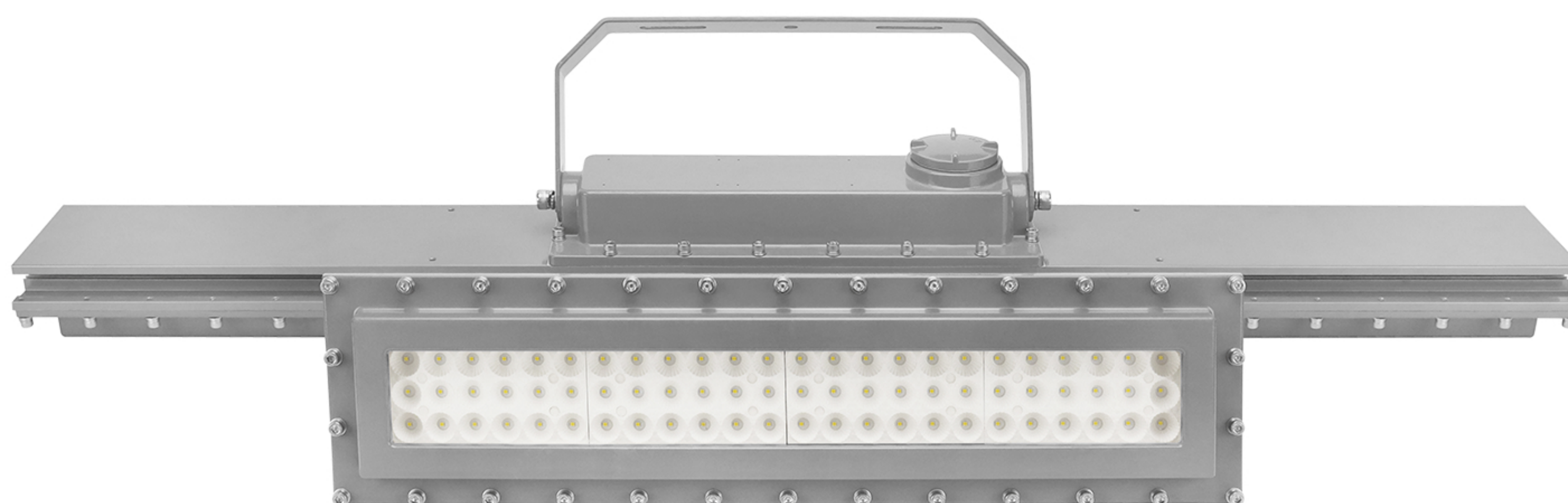




CES-EX-LN SERIES **EXPLOSION PROOF LED LINEAR LUMINAIRES**

CESP hazardous locations



CES-EX-LN SERIES EXPLOSION PROOF LED LINEAR LUMINAIRES

Product description

10mm-thick tempered glass + ADC12 and 6063 aluminum housing for CES-EX-LN explosion proof led linear light is shock-resistant, anti-vibration, can withstand 7J impact, and is equipped with micro-light elements to reduce direct visual contact with the light source, prevent glare, and replace the old and prone to failure Fluorescent light fixtures.

The electrical components inside the explosion-proof lamps are completely sealed and can work underwater (3 meters, we have a long time of hydraulic testing and heavy pressure testing), and the light source chamber is completely separated from the power supply, which effectively avoids the impact of electric sparks on the electrical components or optical components, resulting in explosions.

The explosion-proof performance is reliable and the special process treatment, suitable for salt water and corrosive environments, there are a variety of options to choose, such as emergency, installation, color temperature, length, etc, suitable for harsh environment in Zone 1&21, Zone 2&22.

Features

- Patent designed to be Curved Fin Shape, maximize the best heat transmit.
- Housing -Aluminum alloy (ADC12).
- Lens -tempered glass (10mm) shock & vibration resistant, Super clear, >90% light transmit.
- LED: LM80 certified, high efficacy, low decay, long lifespan. 130lm/W +5, up to 26400lm.
- Meanwell LED Driver, >90% driver efficacy.
- Circuit design: 4KV/6KV Surge Protection power supply.

Certification

ATEX:

- Ex II 2G Ex db op is IIC T5...T6 Gb;
- Ex II 2D Ex tb op is IIIC T94°C...T89°C ...T84°C Db;
- IP66;
- Certificate No: SEV 19 ATEX 0332 X

IECEX:

- Ex db op is IIC T5...T6 Gb;
- Ex tb op is IIIC T94°C...T89°C ...T84°C Db;
- IP66;
- Certificate No: IECEX SEV 19.0039X

Application

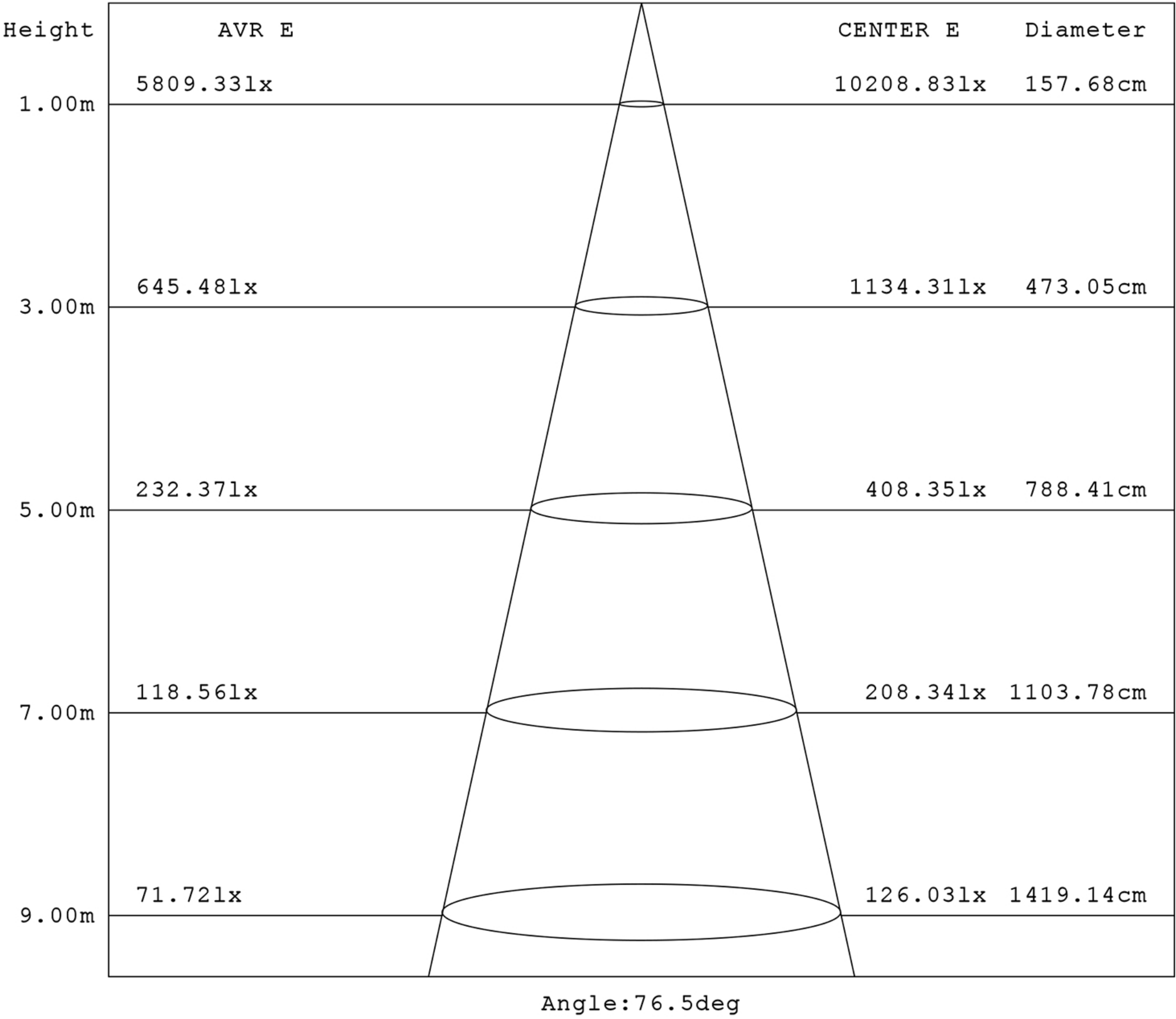
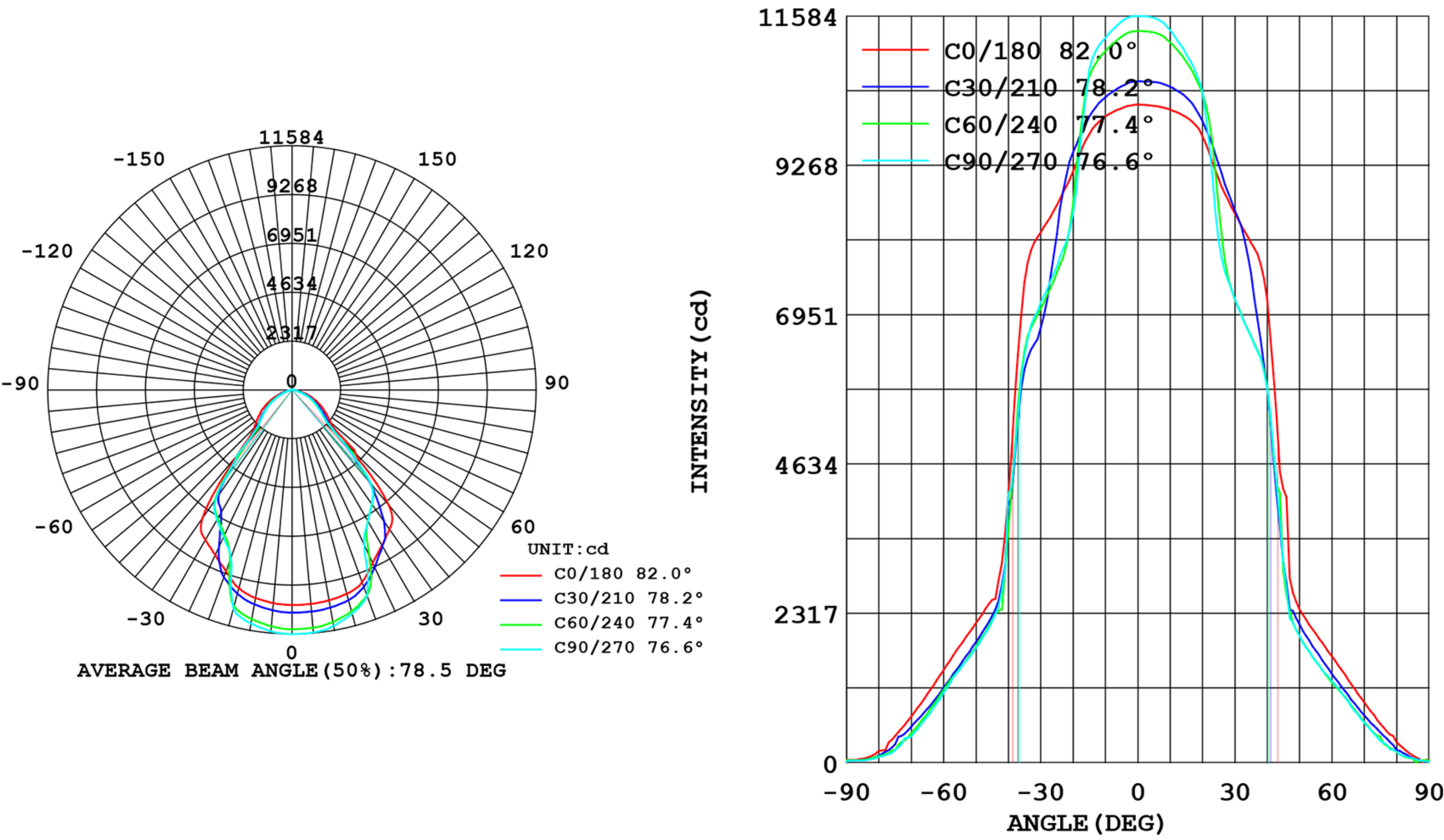
- Wastewater treatment, oil and gas refineries, drilling rigs, petrochemical facilities, food and beverage facilities, tunnels, outdoor wall and stanchion mounted general area lighting, and where flammable vapors, gases, ignitable dusts, fibers or flyings are present.
- Applies to hazardous locations of Zone 1 and Zone 2 with explosive gas atmosphere.
- Applies to hazardous locations of Zone 21 and Zone 22 with explosive dust atmosphere.

Warranty

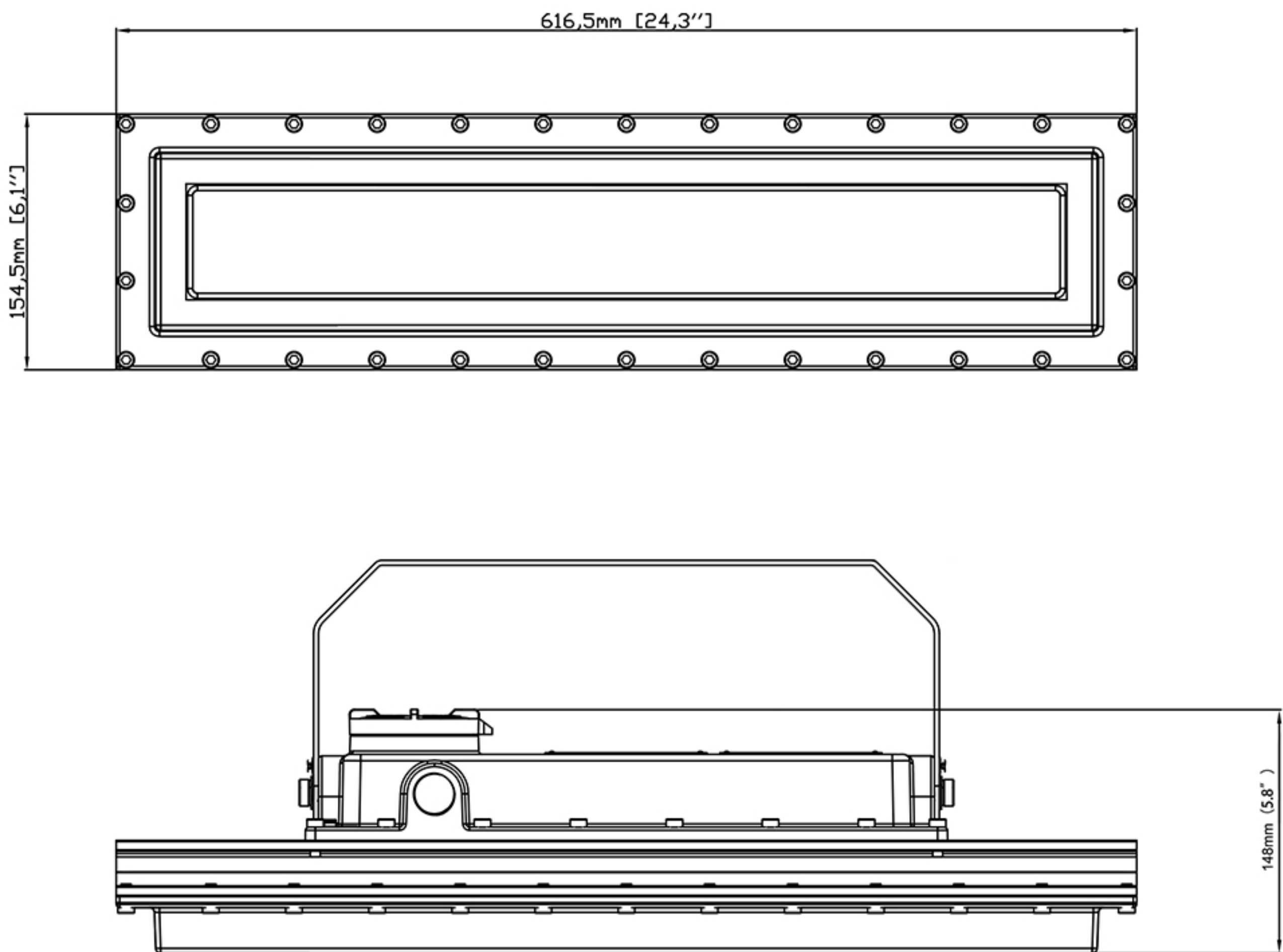
5-Year Standard Warranty



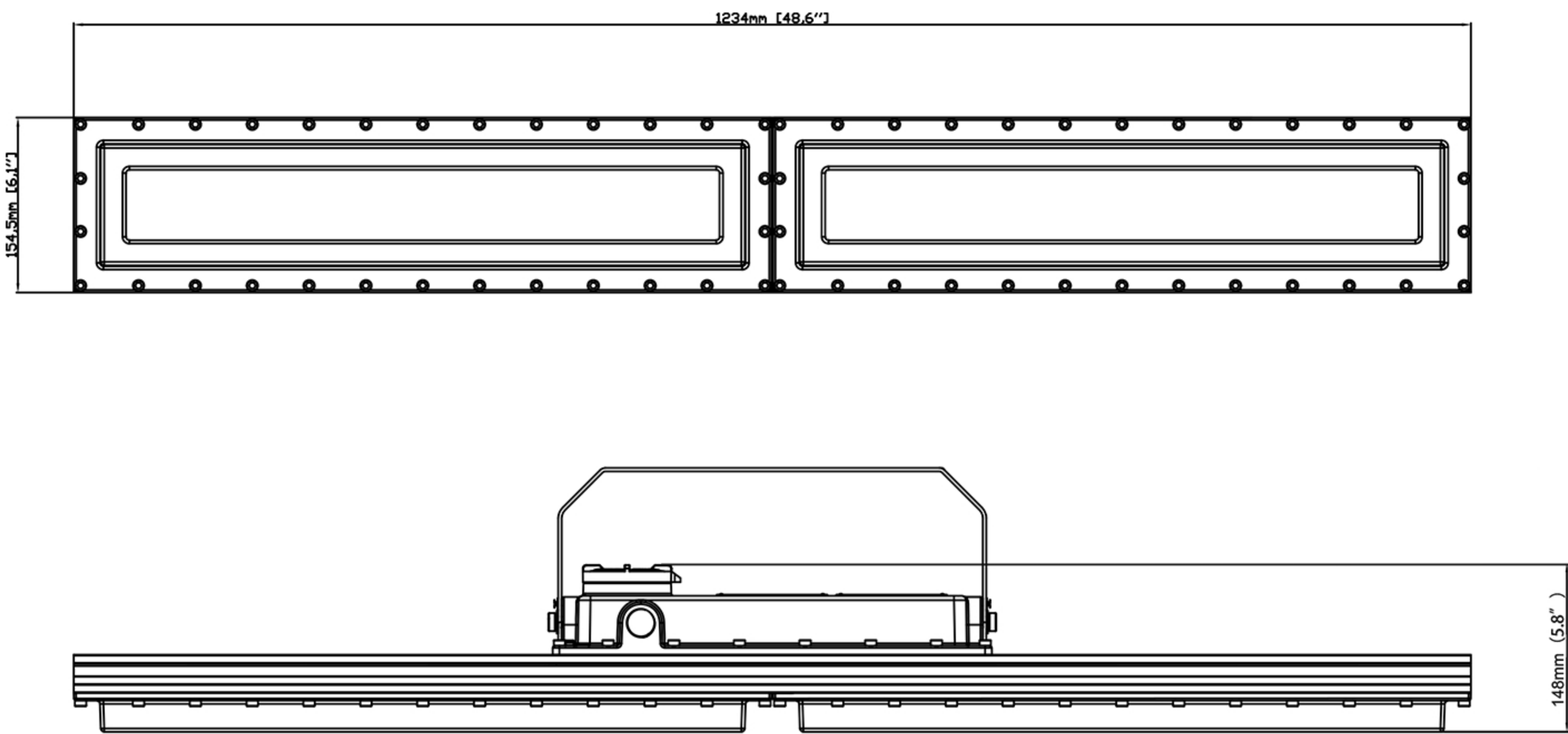
LightingDistribution



Size and packaging



Product Model	Product Size	Carton Size	QTY/CTN	Net Weight	Gross Weight
CES-EX-LN-50XXXX	617×155×148 mm / 24.3×6.1×5.8"	690×290×240mm/27.2×11.5×9.5"	1	11.4 kg/25.2 lbs	11.7 kg/25.8 lbs
CES-EX-LN-60XXXX	617×155×148 mm / 24.3×6.1×5.8"	690×290×240mm/27.2×11.5×9.5"	1	11.4 kg/25.2 lbs	11.7 kg/25.8 lbs
CES-EX-LN-80XXXX	617×155×148 mm / 24.3×6.1×5.8"	690×290×240mm/27.2×11.5×9.5"	1	11.4 kg/25.2 lbs	11.7 kg/25.8 lbs
CES-EX-LN-100XXXX	617×155×148 mm / 24.3×6.1×5.8"	690×290×240mm/27.2×11.5×9.5"	1	11.4 kg/25.2 lbs	11.7 kg/25.8 lbs

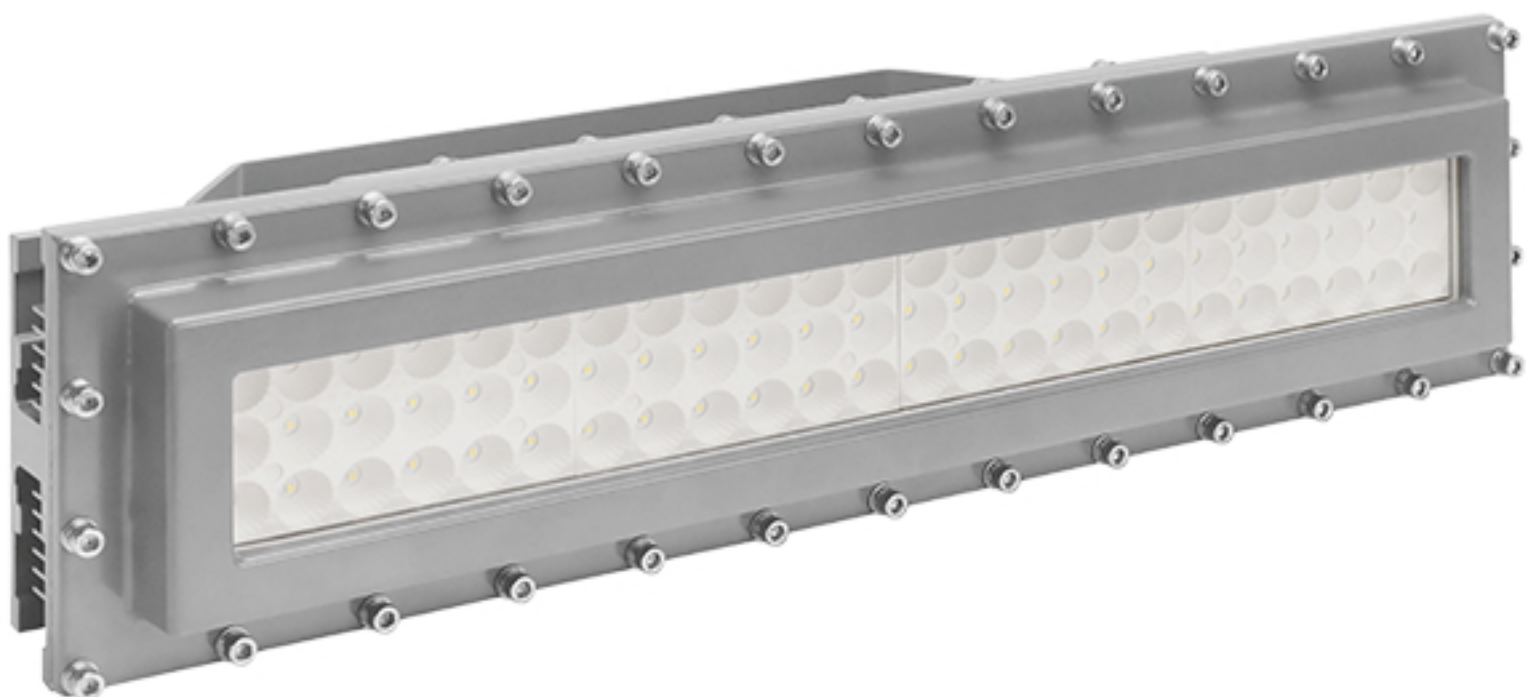
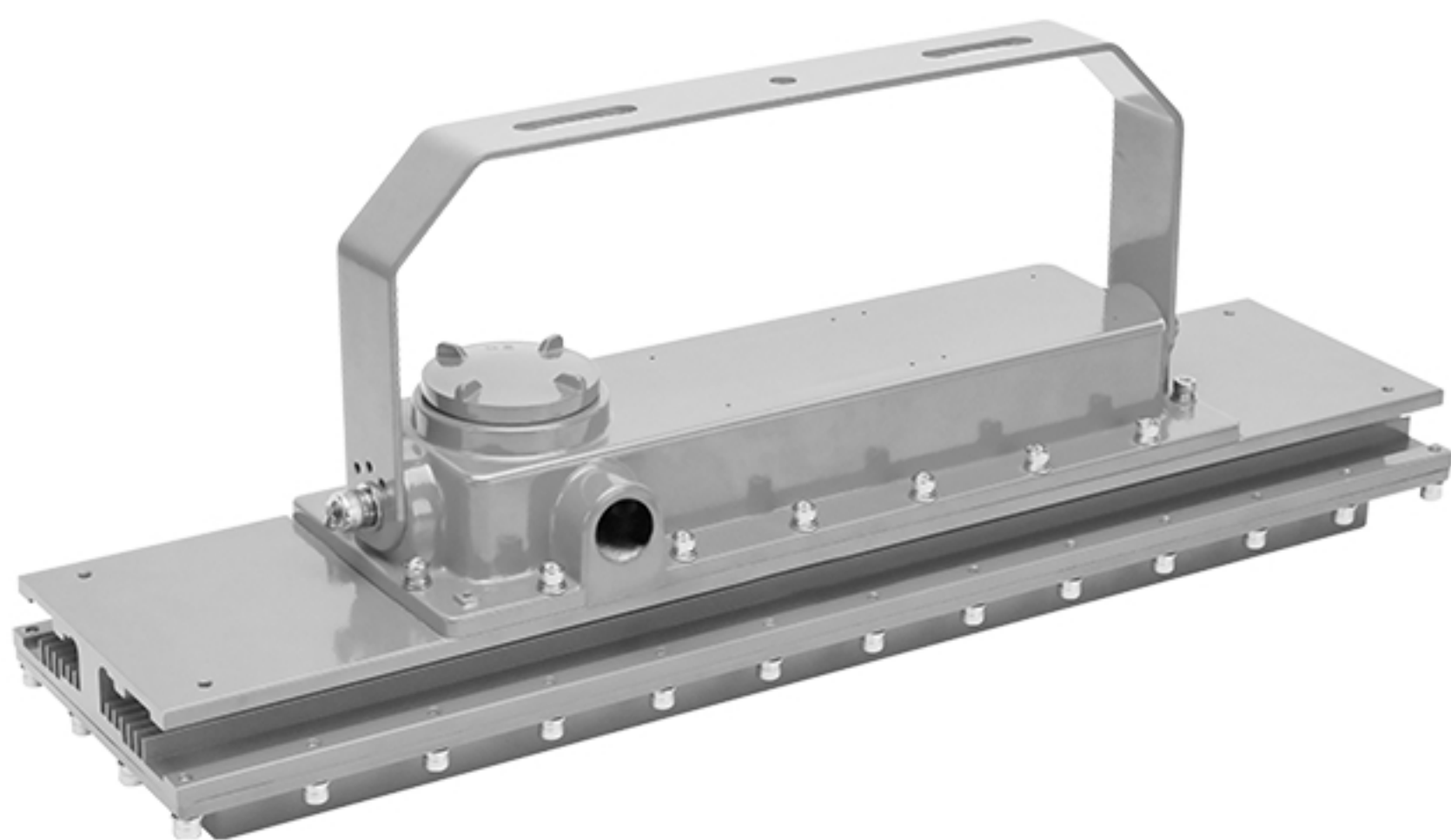


Product Model	Product Size	Carton Size	QTY/CTN	Net Weight	Gross Weight
CES-EX-LN-120XXXX	1235×155×148mm/48.6×6.1×5.8"	1310×290×240mm/51.6×11.5×9.5"	1	19.4 kg/42.8 lbs	20.7 kg/45.7 lbs
CES-EX-LN-150XXXX	1235×155×148mm/48.6×6.1×5.8"	1310×290×240mm/51.6×11.5×9.5"	1	19.4 kg/42.8 lbs	20.7 kg/45.7 lbs
CES-EX-LN-180XXXX	1235×155×148mm/48.6×6.1×5.8"	1310×290×240mm/51.6×11.5×9.5"	1	19.4 kg/42.8 lbs	20.7 kg/45.7 lbs
CES-EX-LN-200XXXX	1235×155×148mm/48.6×6.1×5.8"	1310×290×240mm/51.6×11.5×9.5"	1	19.4 kg/42.8 lbs	20.7 kg/45.7 lbs
CES-EX-LN-240XXXX	1235×155×148mm/48.6×6.1×5.8"	1310×290×240mm/51.6×11.5×9.5"	1	19.4 kg/42.8 lbs	20.7 kg/45.7 lbs

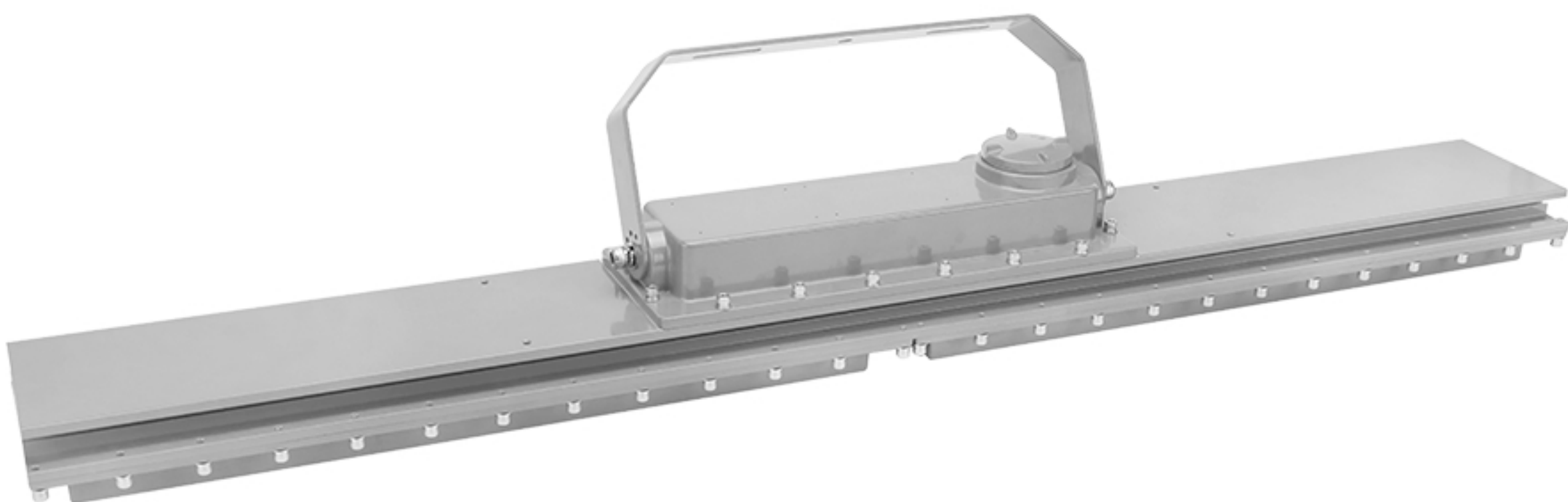
Technical parameter

ProductModel	CES-EX-LN-50~100XXXX	CES-EX-LN-120~240XXXX
Type	LED Explosion proof Linear Light	LED Explosion proof Linear Light
luminous efficiency	120-140lm/W	120-140lm/W
Power (W)	50W / 60W / 80W / 100W	120W / 150W / 185W / 200W / 240W
Voltage - Frequency	100-277Vac 50-60Hz	100-277Vac 50-60Hz
Color Temp	Provides 3000K to 6500K	Provides 3000K to 6500K
CRI (Ra) (typ.)	≥70	≥70
Power Supply	High Efficiency LED driver, more than 50000 hours lifespan	High Efficiency LED driver, more than 50000 hours lifespan
Beam Angle	120°	120°
Power Factor	>0.95	>0.95
Rated Lifetime - L70 (hrs.)	50,000	50,000
THD	< 10%	< 10%
Operating temperature	-40 °C to +50 °C	-40 °C to +50 °C
Entry Size	3/4"-14 NPT or M25 X1.5 or M26 X1.5	3/4"-14 NPT or M25 X1.5 or M26 X1.5
Cable	Three-core rubber cable, IEC (CE) certification, with 0.5m cable (Standard)	Three-core rubber cable, IEC (CE) certification, with 0.5m cable (Standard)

Product display

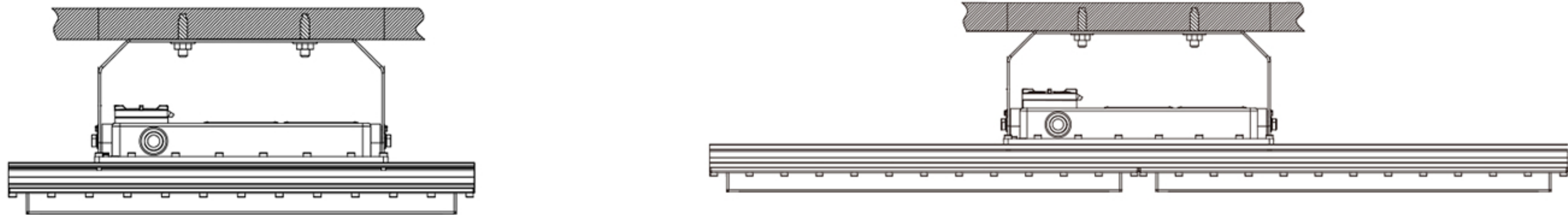
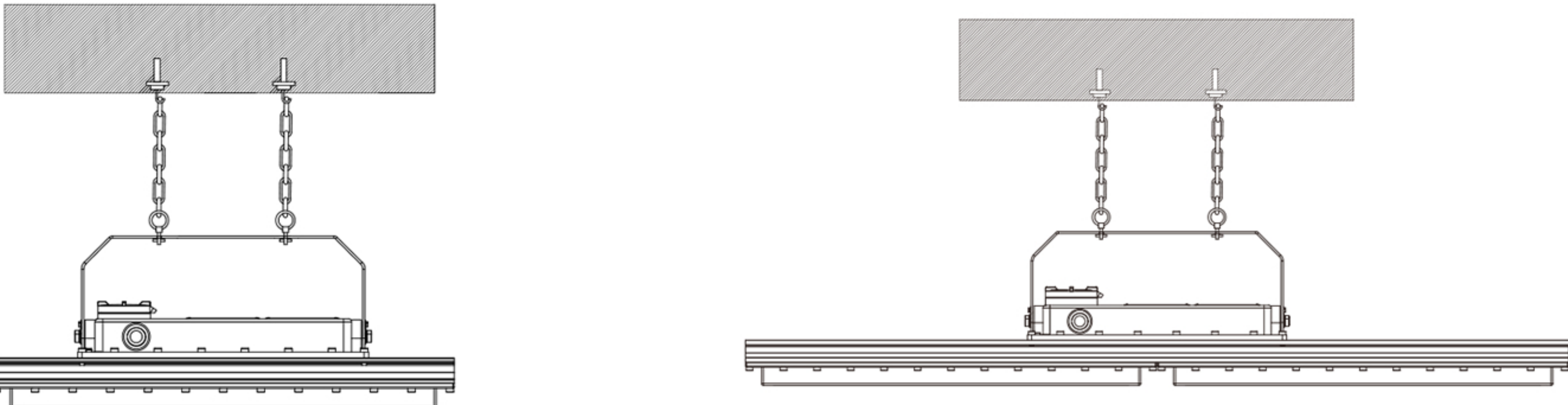
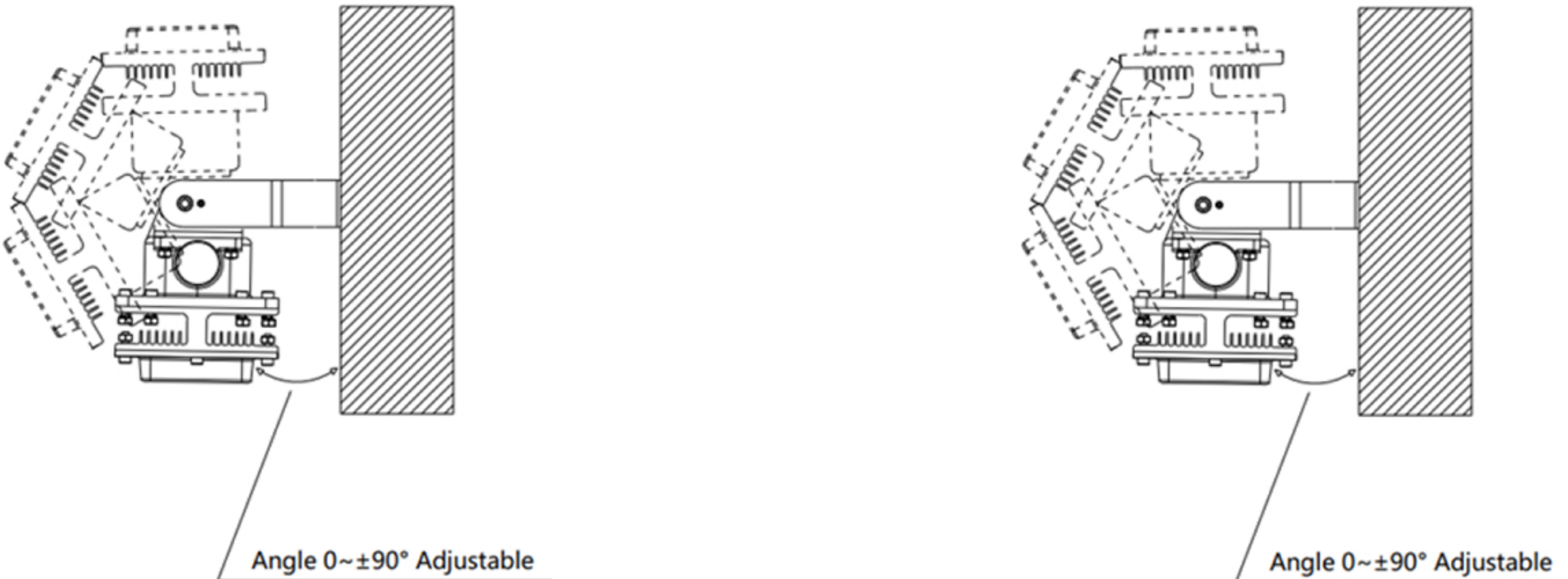


CES-EX-LN-(50~100W)



CES-EX-LN-(120~240W)

Installation method

<p>A、Ceiling mount</p>	
<p>B、Drop mount</p>	
<p>C、WM - Wall Mount</p>	
<p>D、Pole Mounting</p>	