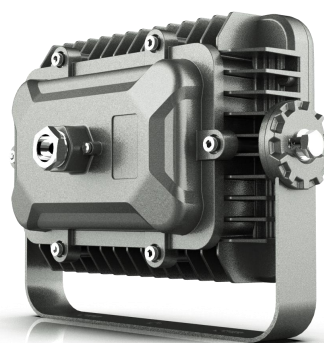
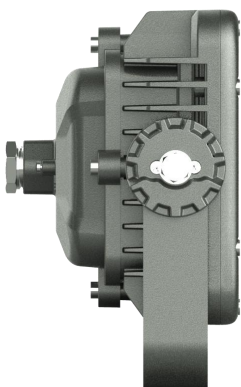
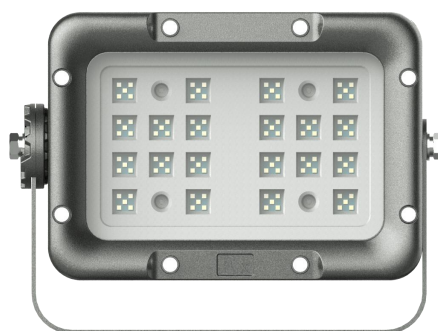
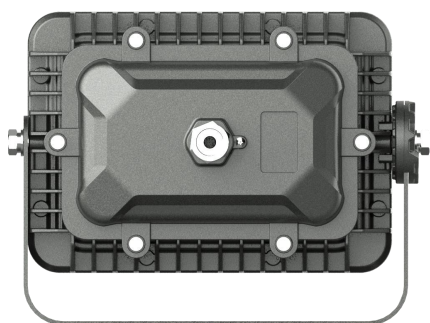


PRODUCT SPECIFICATION



Model	OHBF8189
Product name	LED Explosion Proof Light

Part 1:Picture of Products



Part 2:Product Features


1. Application Scenarios

This product is suitable for efficient lighting in railway, electric power, metallurgy, petroleum, petrochemical, chemical, steel, aviation, ship and various types of factories, stations, large facilities, venues and other places.

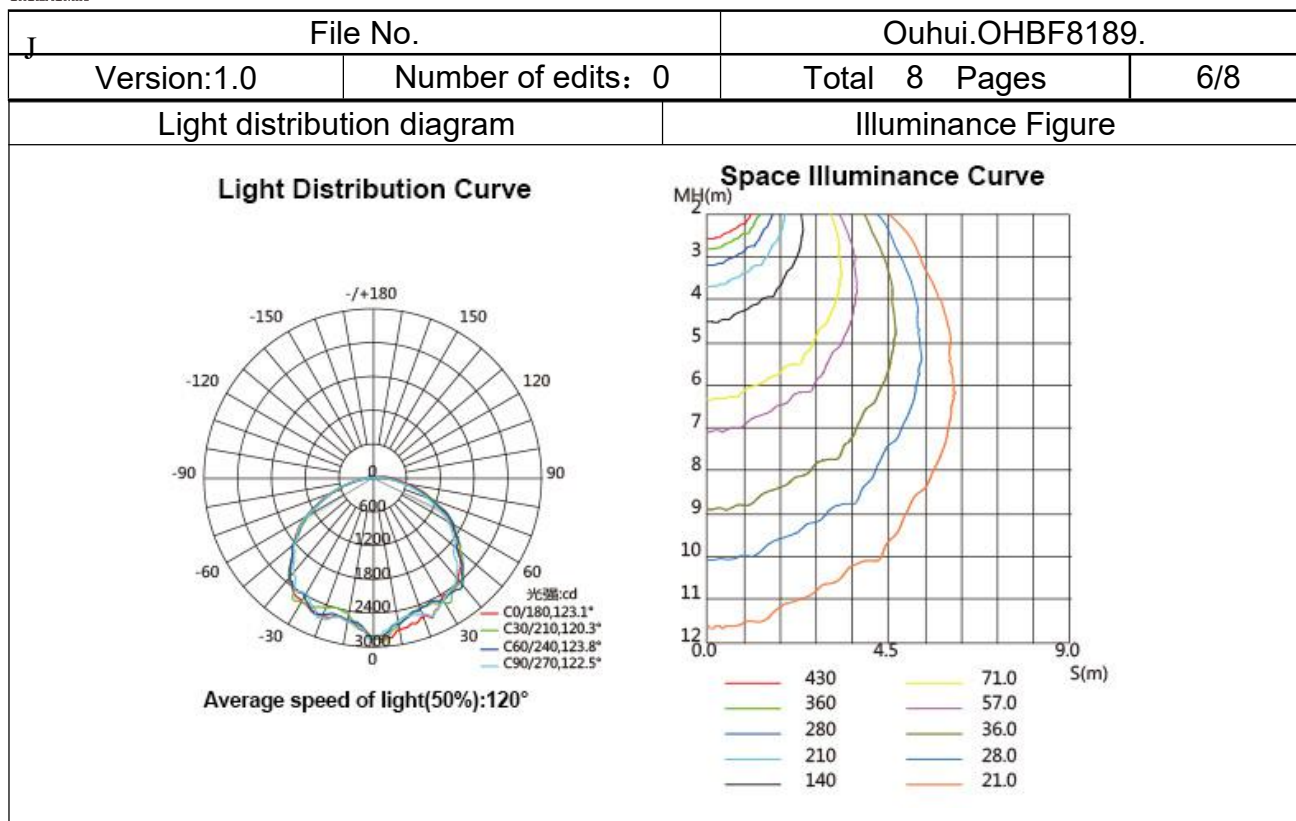
2. Products Features

- (1) Configuration: It adopts imported LED light source, with an average service life of up to 100,000 hours. The power supply adopts wide voltage processing, which can realize constant current output, and has short-circuit and over-voltage protection functions, which greatly prolongs the service life of the lamps.
- (2) Heat dissipation:Independent up and down ventilation convection structure design, improve the heat dissipation performance at the same time to avoid the conventional LED radiator will accumulate dust phenomenon. The heat sink is arranged in an array of inner and outer circumferences to improve heat dissipation performance.
- (3) transparent parts: the use of high purity tempered glass, light transmittance of up to 95% -98%. The light projection is even and soft, especially suitable for various low-top, platform, high-top, high-shed and other places as fixed lighting.
- (4) Protection: The protection level of the lamp body is IP66, and the anti-corrosion level can reach WF2. The surface of the lamp body will never corrode and never rust.
- (5) Installation method: Various installation methods such as ceiling, curved rod, vertical pole, ceiling, U-shaped anti-vibration bracket (angle adjustable) can be used as needed.
- (6) Wiring: The double inlet port design can realize the series connection and installation of the lamps. Separation design of power supply cavity and wiring cavity has great assembly space, which makes the installation and wiring more safe and convenient, and the heat dissipation performance is more prominent.

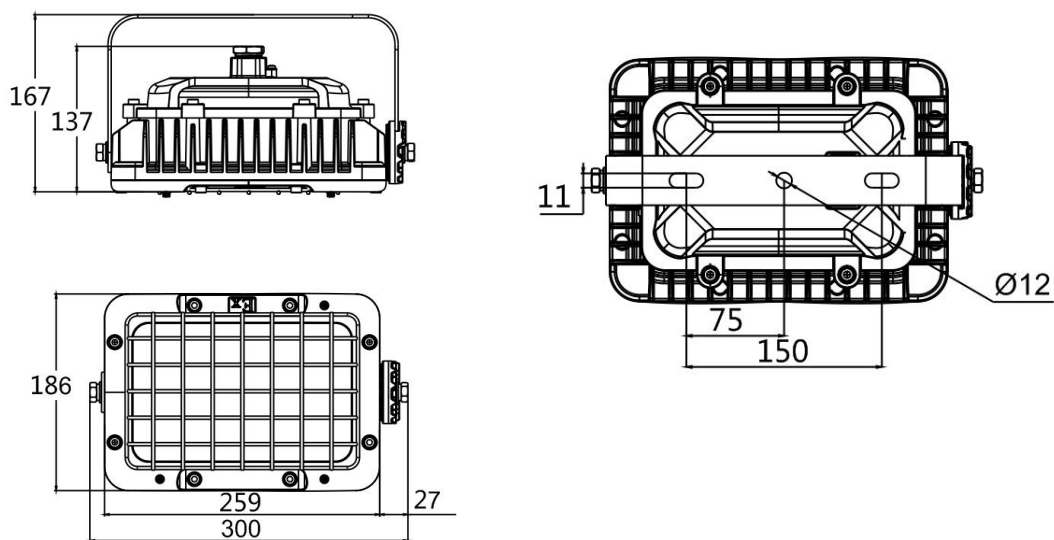
Part 3:Product Parameters

Item	Symbol	Description	Unit
Pictue of Products			
Rated Voltage	VOLT	DC 24	V
Power	P	30-70	W
Protection Level	IP	IP66	IP
Lighting Angle	θ	45/ 60/90/120	°
LED Qty	/	60/100	PCS
Base specifications	/	CREE3030	
Anti-corrosion grade	/	WF2	
Explosion proof grade	/	Ex de mb IIC T6	
Light efficiency	η	120	Lm/W
Frequency	f	50/60	Hz
Power Factor	PF	>0.95	PF
Operating Temperature	TOPR	-30~50	°C
Storage Temperature	TOPR	-30~50	°C
Light Source	/	led	PCS
Correlate Color Temperature	Tc	3000-6500	K
Color Rendering Index	CRI	≥ 70	RA
LED'S Operating Life	LIFE	100000	Hours
Start-up time	T	≤ 0.2	S
Executive standard	/	GB3836.1、 GB3836.2	
Weight	/	3.8	KG
Size	/	300×186×137	mm

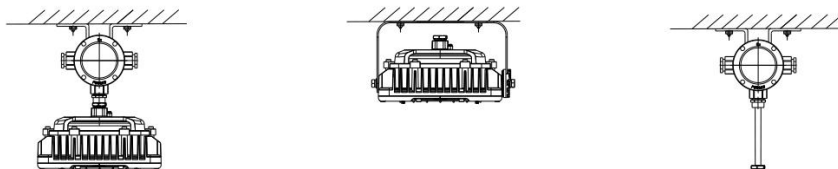
Part 4:Test Report



Part 5:Dimensions



Part 6:Installations



J	File No.	Ouhui.OHBF8189.	
Version:1.0	Number of edits: 0	Total 8 Pages	7/8

Part 7:Packaging Logistics

Name	Description	Quantity pcs
Outer box	33.6*51.4*21cm 5-layer corrugated paper	1
Foam	38*10.9*6.3cm	1
Line foam	95*95*54mm	1
N.W.	7.6kg	/
G.W.	7.9kg	/
Packaging Method	2 pcs in 1 carton.	



Part 8:Precautions

J File No.		Ouhui.OHBF8189.	
Version:1.0	Number of edits: 0	Total 8 Pages	8/8

1. Schematic diagram

A.Before installation, it is necessary to check whether the actual operating conditions are in conformity with the parameters listed on the lamp nameplate.

B.Before installation, please test the lighting according to the parameters of the lamp nameplate to ensure that there is no quality problem before installation.

C.Before installation, it is necessary to determine the installation location and mode of the lamps according to the installation mode provided by the product, in combination with the on-site use environment and lighting requirements, so as to ensure that the installation is firm and reliable.

D.Connect the prepared cables with the input cables of lamps and lanterns according to the corresponding fire (brown), zero (blue) and ground (yellow-green) wires, so as to ensure that the connection is firm, and make good insulation and waterproof measures at the connection.

E.The input end of the cable can be connected to the power supply of the corresponding voltage to illuminate.

2. Attention

A. This product is an explosion-proof product and can be used in explosion-proof places.

B. When transporting, the lamp should be installed in the carton equipped with foam shock absorption.

C. When using, the surface of the lamp has a certain temperature rise, which is a normal phenomenon.

D. The power supply voltage can work normally in the rated voltage. If the power supply voltage is too high, the lamp will be damaged; if the voltage is too low, the lamp will not start normally.

E. The luminaire must be reliably grounded.

3. Quality Assurance

The company has passed ISO9001:2008 international quality system audit certification, this product strictly implements ISO9001 international quality management system standard production, to ensure that the product quality fully meets national standards and design requirements.