

ICON™ SERIES

Tool-Free
Die Cast
Street Light

E-LITE semicon

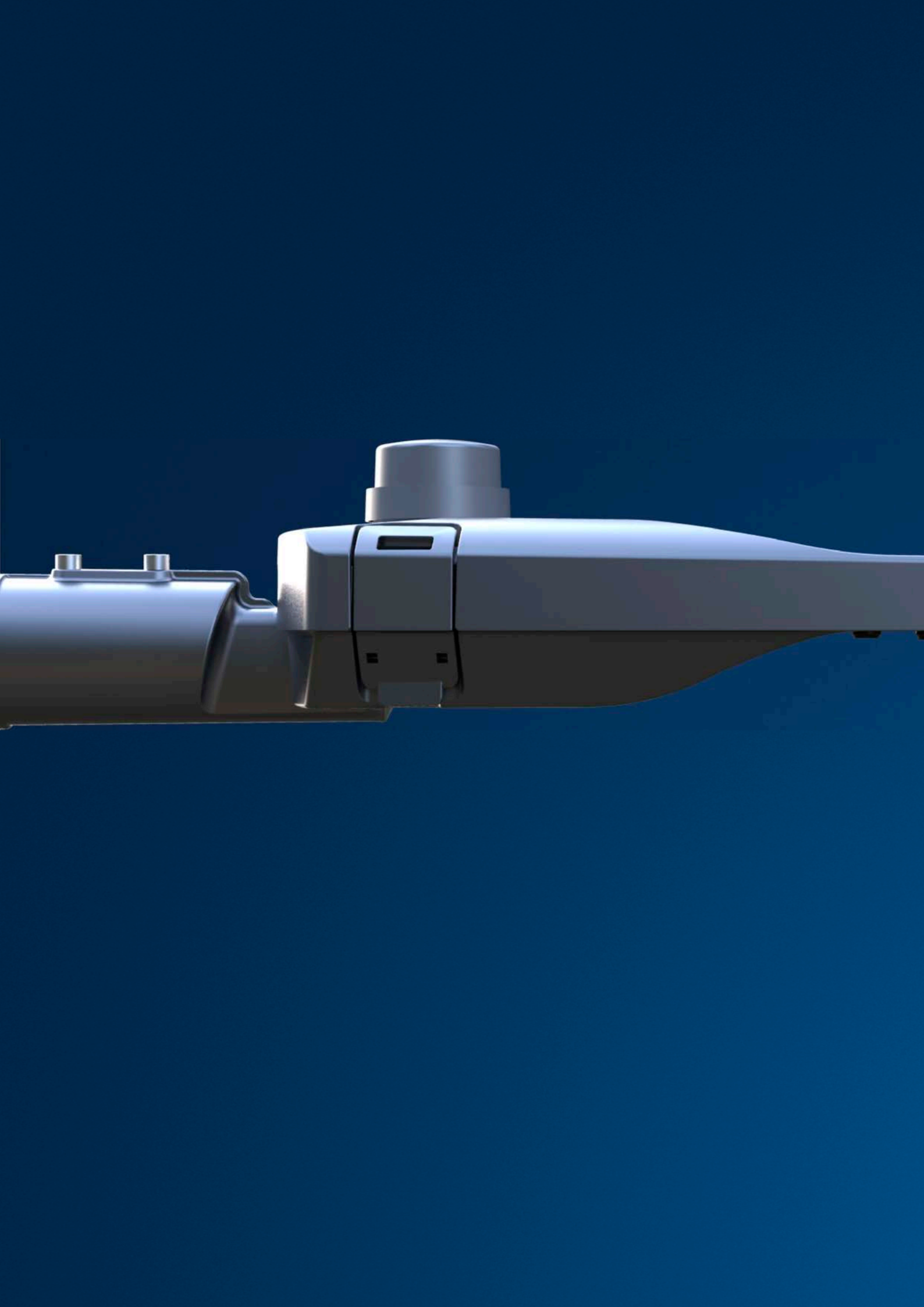
TIME TO CHANGE

Icon is a perfect lighting solution for municipalities looking for a fast return on investment. As a true point-to-point replacement solution for conventional light sources, the compact luminaire, with elegant finless design, is eco-friendly and easy to install with its tool-free access to gear tray and tool-free replacement of the component in the gear compartment.

Icon is available with a number of different optics and lumen packages that can even be tuned further to fit exact project requirements. Its universal spigot is adapted to both post-top and side-entry mounting.

With future-ready socket and could be paired with any control system, Icon could achieve up to 75% of energy savings compared to conventional lamp systems.





PRODUCT FEATURES

System Light efficacy 140 LPW.

Rugged one-piece die cast housing with corrosive resistant polyester powder coat finish body.

Multiple choices of optical lenses for true type II and type III street lighting pattern.

Tool free access for easy installation, direct slide-in mount.

IP66 water and dust proof.

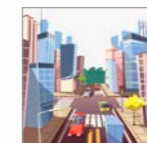
3G Vibration & IK08 impact resistance.

5-10 Years Warranty.

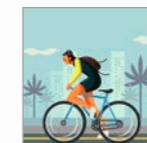
APPLICATIONS



Roads &
Motorways



Urban &
Residential
Streets



Bike &
Pedestrian
Paths



Squares &
Pedestrian
Areas



Bridges



Large Areas



Railway Station &
Metros



Car Parks



PERFORMANCE



10W~200W



132lm/W~145lm/W



Philips Lumileds



AC 100~277V



0.95 min



Inventronics / Sosen



≥70



4500~5500K (2500~6500K Optional)



L70>100,000hours



80x150° / 85x155° / 90x150° / 100x150°



IP66



IK08



3G Vibration



Operating Temperature:-45°C to +45°C (-49°F to 113°F)
Storing Temperature:-45°C to +80°C (-49°F to 176°F)

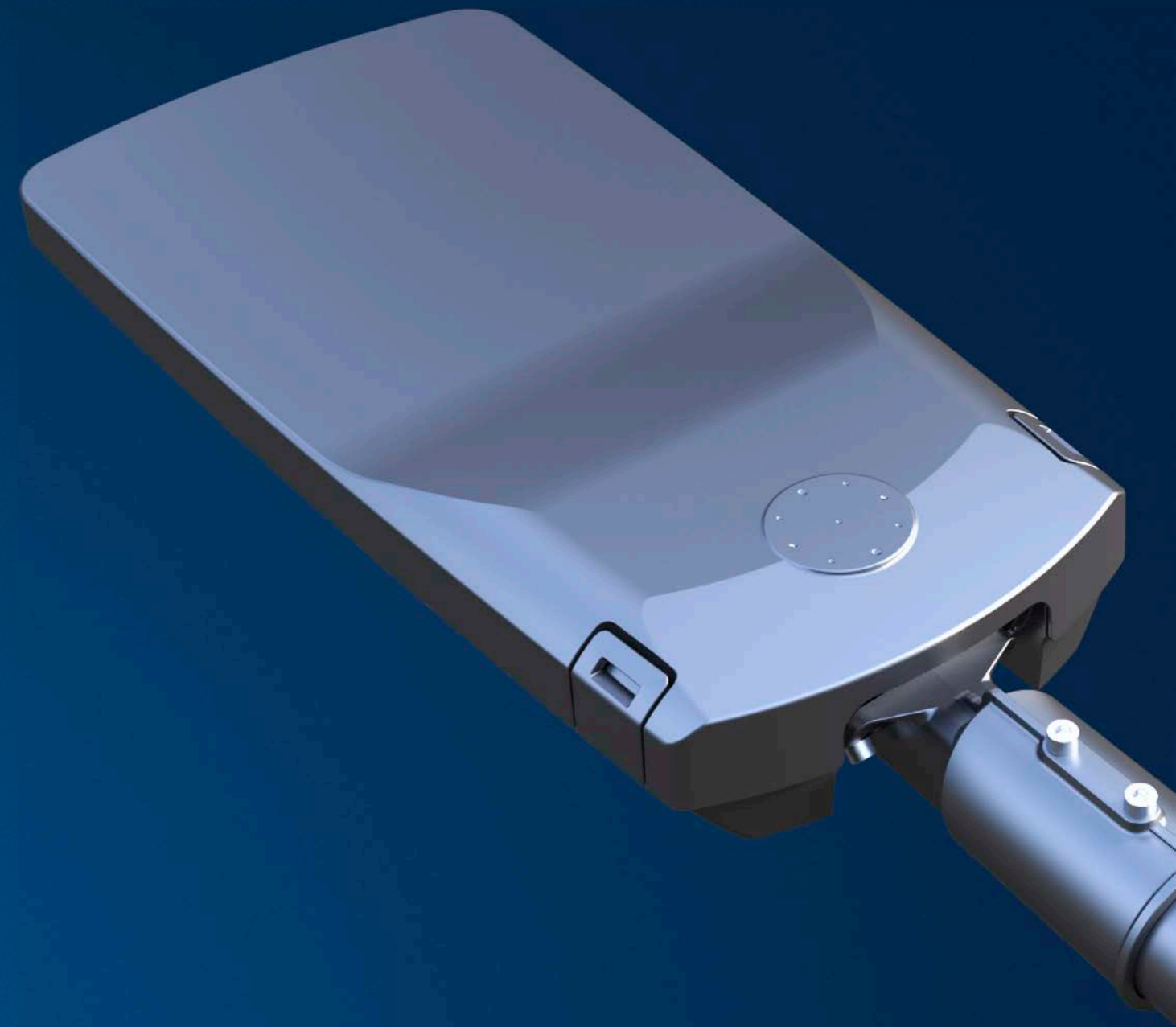
CB

CE



SPECIFICATIONS

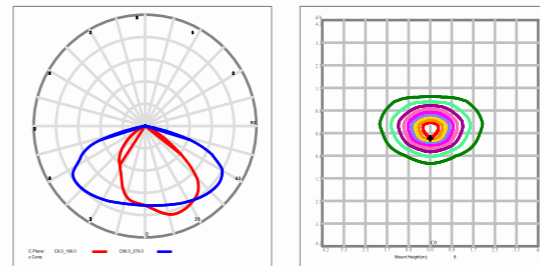
Part#	Power	LEDs Qty	Lens Qty	Output Current (Each Chips)	Efficacy (IES)	Total Lumens	N.W	Product Dimension
EO-STIC-50	10W	24	2	63mA	145lm/w	1450lm	4.0kg/8.8lbs	577×233×103mm 22.7×9.2×4.1in
	20W	32	2	95mA	140lm/w	2800lm		
	30W	48	4	95mA	140lm/w	4200lm		
	40W	60	4	102mA	140lm/w	5600lm		
	50W	60	4	125mA	135lm/w	6750lm		
EO-STIC-100	60W	72	6	125mA	137lm/w	8220lm	4.0kg/8.8lbs	627×272×103mm 24.7×10.7×4.1in
	70W	96	6	112mA	143lm/w	10010lm		
	80W	96	6	126mA	140lm/w	11200lm		
	90W	96	6	145mA	137lm/w	12330lm	5.0kg/11.0lbs	
	100W	96	6	155mA	135lm/w	13500lm		
EO-STIC-150	110W	112	7	152mA	132lm/w	14520lm	5.0kg/11.0lbs	627×272×103mm 24.7×10.7×4.1in
	120W	144	9	130mA	142lm/w	17040lm		
	130W	144	9	140mA	139lm/w	18070lm		
	140W	144	9	150mA	137lm/w	19180lm		
	150W	144	9	155mA	135lm/w	20250lm		
EO-STIC-200	160W	192	12	130mA	137lm/w	21920lm	6.0kg/13.2lbs	767×300×103mm 30.2×11.8×4.1in
	170W	240	16	112mA	140lm/w	23800lm	6.5kg/14.3lbs	
	180W	240	16	120mA	138lm/w	24840lm		
	200W	240	16	130mA	135lm/w	27000lm		



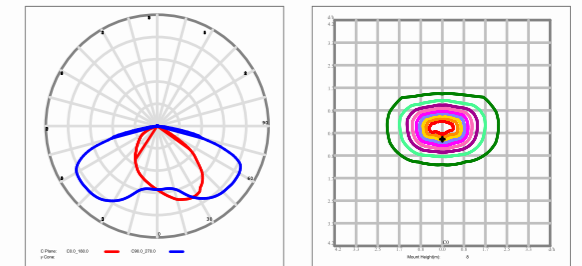


PHOTOMETRICS

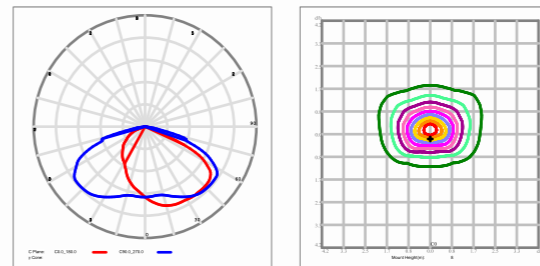
80x150(Type II -S)



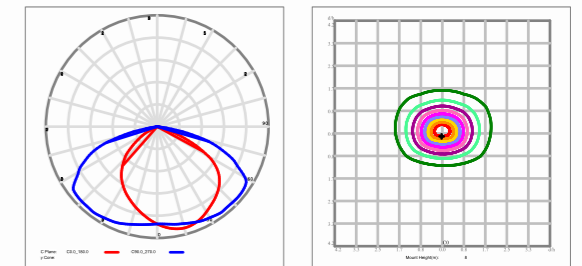
85x155(Type II -S)



90x150(Type III -S)



100x150(Type III -S)

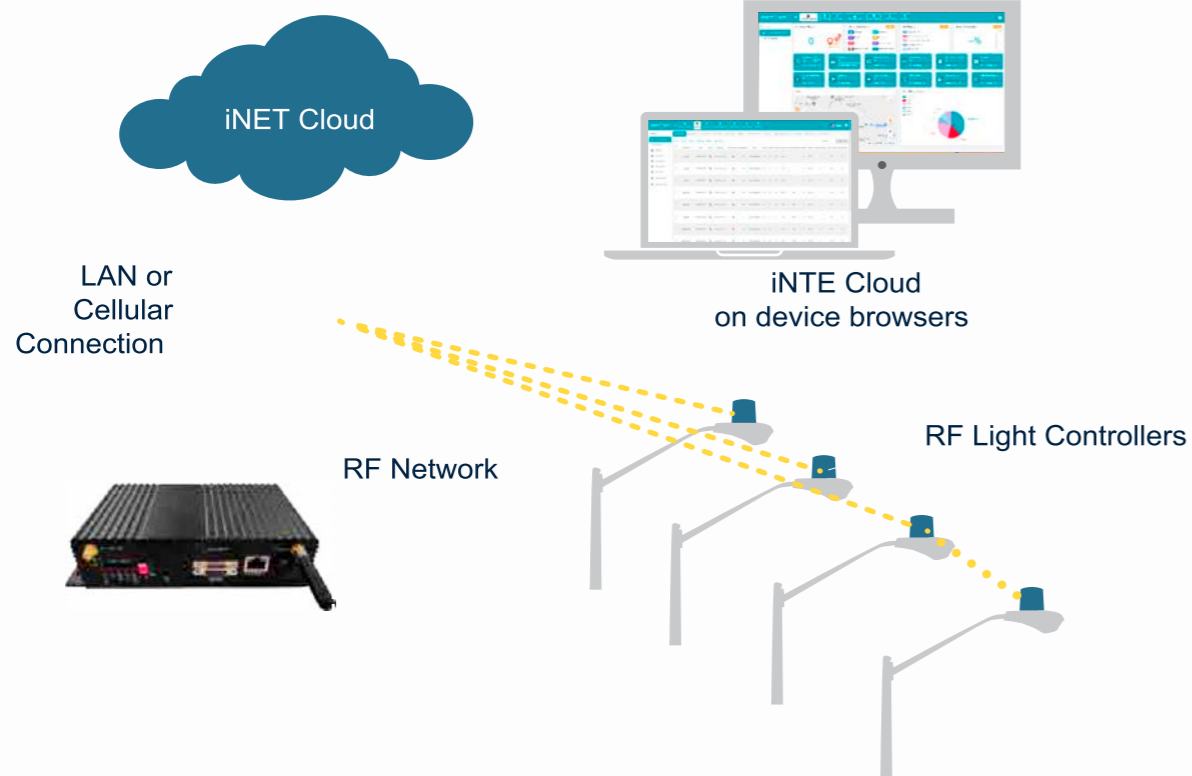


A FUTURE PROOF SOLUTION

Smart City

iNET™ Intelligent Lighting Monitor & Control System is a cloud based wireless smart system designated for lighting management.

With gateways + control node., iNET™ System monitors lights performance status, collects operation data, controls lights on/off or dimming, and sends alarm in case of fault detected.



System & Hardwares



Automatic Light On/Off & Dimming Control

- By time setting
- On/off or dimming with motion sensor detection
- On/off or dimming with photocell detection



Accurate Operation & Fault Monitor

- Real-time monitor on each light working status
- Accurate report on fault detected
- Provide location of fault, no patrol required
- Collect each light operation data, such as voltage, current, power consumption



Extra I/O Ports for Sensor Expandability

- Environment Monitor
- Traffic Monitor
- Security Surveillance
- Seismic Activities Monitor



Reliable Mesh Network

- Self proprietary wireless control node
- Reliable node to node, gateway to node communication
- Up to 1000 nodes per network
- Max. network diameter 2000m



Easy-to-use Platform

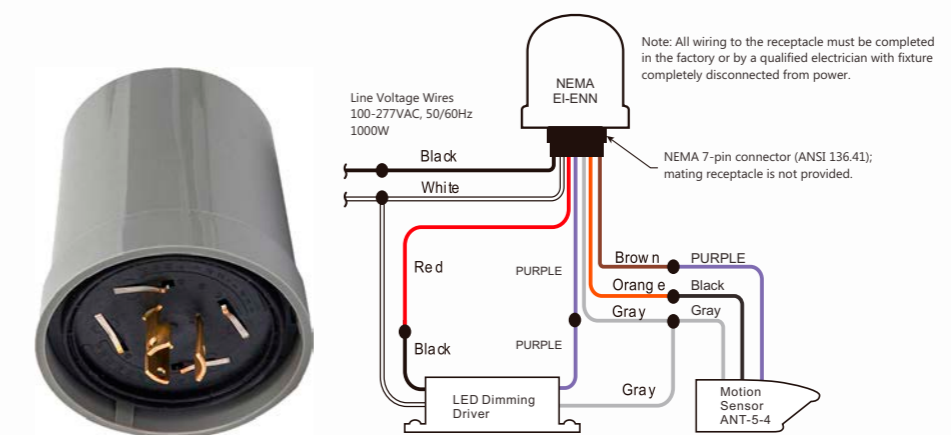
- Easy monitor on each and all lights status
- Support lighting policy remote set-up
- Cloud server accessible from computer or hand held device



ELECTRICS

Future Ready NEMA/Zhaga Connection

Ready NEMA or Zhaga socket to enable further control of streetlight from simple photocell to smart city controller node.



TOOL-FREE ACCESS

In order to avoid the inconvenience and safety hazards of multi-tool operation, Icon series street light is designed with tool free access to facilitate high-altitude installation and maintenance by maintenance personnel.



INSTALLATION

For high performance and long term reliability, the light should be installed in free air.

Slip Fitter Mount

1. Unlock the screws, adjust the angle of slip fitter.
2. Feed the power cord through the pole and make wiring.
3. Slide the fixture onto the pole, lock the screws.



ORDERING INFORMATION

