

LF100 LED Heliport Floodlight is proved to be reliable quality and widely used at all kinds of helipads, rooftop, surface ground, shipboard, and helidecks. It shall be located so as to avoid glare to pilots in flight or personnel working on the area. Floodlighting system ensure the helipad surface illumination not less than 10 Lux.

Applications:

- Elevated mounted illumintaed TLOF/FATO area.
- Winching areas.
- Parking areas.

Compliant:

- ICAO Annex 14, Volume II, 4th Edition, July, 2013
- FAA AC150/5390-2C

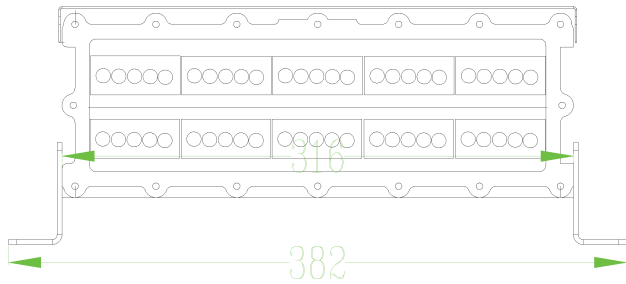
Why LF100:

- Lens hood reduce the glare to pilots.
- Fixture can be used with 100V~250V AC, 50Hz or 60Hz.
- Low profile, lowest adjustable less than 15cm in height.
- Provide efficient lux for the surface of heliport.
- Rating IP67.

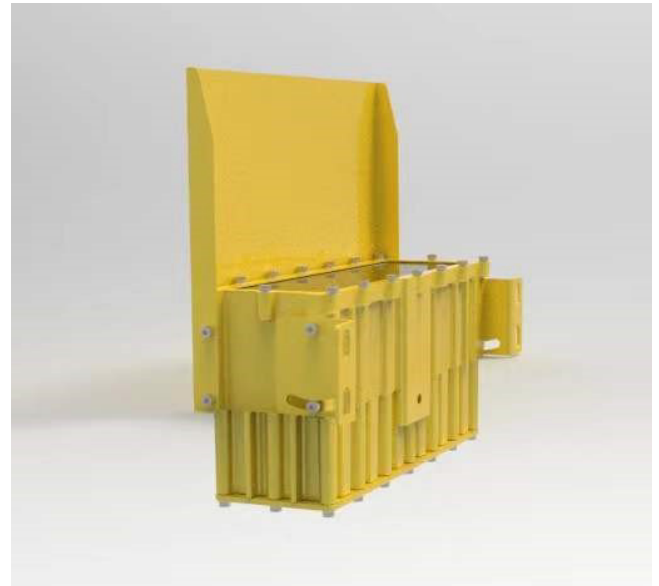
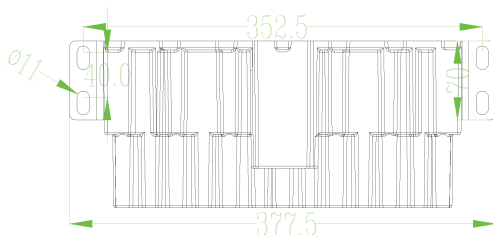
LED &Electrical Characteristics:

- Color temperature 5000K.
- LED light source 100,000 hours lifetime.
- Luminous flux 15000Lm.
- Power by 100V to 250V AC, 50Hz or 60 Hz or 12 to 32V DC
- 35 W power consumption(DC Type), 100W(AC Type).

Drawings:



Mounting size:



Physical Characteristics:

- Aluminum alloy housing made.
- Powder coating finish,color in yellow.
- UV stabilized tempered glass lens cover.
- Lay size: 38.2cm in length/31.5cm (with hood)×14.7cm(Height).
- Mounting details as dimension marking.
- 6KG net weight.

Environmental:

- Operating at -40°C to 60 °C.
- Wind speed: 80m/s.

Ordering codes:

Type	Output	Lamp	Option
LF100	W: White	AC: 100/250V ¹ DC: 12~32V ²	Standard Dimming

¹ Operation at AC100V to 250V, 50Hz or 60Hz.

² Operation at DC12~32V, 50Hz or 60Hz.

