

Description

HA05 LED Luminaires for Hazardous Locations, It has superior waterproof, dustproof, anti-corrosion, anti-vibration performance, an ideal solution for all types of harsh and hazardous applications.

Key Features

- Power range 30W/50W/75W/100W/120W/150W/180W/200W/240W, system efficacy up to 140lm/w, lumen packages from 4200lm to 33600lm.
- Warm White-Cool White color(2000K-6500K) and colored LED R/G/B/AMBER optional.
- 1-10V dimmable and DALI control optional.
- Type I, Type III, Type V light distributions to meet various different applications.
- LED chips are separated from the driver cavity, ensures good heat dissipation and longer service life.
- Multiple mounting ways including Ceiling mount, Pendant mount, Wall bracket, 25° Stanchion mount, 90° Stanchion mount, Trunnion mount to satisfy different installation requirements.
- Ceiling mount, bracket mount and wall mount are equipped with multiple conduit holes, which can realize the interconnection of fixtures, greatly facilitates on-site installation and wiring.
- Easy wiring with self-locking spring terminals.
- Cover on driverbox is designed anti-dislodging.
- The body adopts special design, avoid water being accumulated, easy clean and well heat performance.
- Well sealed with special structure and materials.
- IP66 and IK08 double protection, with super reliability.
- The max.operating ambient temperature range:-40°C to 65°C.
- Equipped with low copper aluminum alloy body and special powder coating, as well as stainless steel components with special anti-corrosion treatment, all those anti-corrosion aspects make it suitable for marine environments.

Applications

- Oil and gas refineries.
- Drilling rigs.
- Petrochemical facilities.
- Food and beverage facilities.
- Indoor/outdoor spotlighting, outdoor wall and stanchion mounted general area lighting.
- Where flammable vapors, gases, ignitable dusts, fibers or flyings are present.

Electrical Information

Model No.	HA05-030	HA05-050	HA05-075	HA05-100	HA05-120	HA05-150	HA05-180	HA05-200	HA05-240
Power Consumption(±5%)	30W	50W	75W	100W	120W	150W	180W	200W	240W
Power Supply	INVENTRONICS								
Input Voltage	100-277Vac/277-480Vac, 50 / 60 Hz								
Power Factor	>0.90								
Surge Protection	10kV line-line, 10kV line-earth								
Driver Type	Constant current (CC)								
Control	1-10V Dimmable and DALI dimmable and Non-dimmable /								

Optic Information

LED Type	LED 3030								
Luminous Flux (±10%)	4200lm	7000lm	10500lm	14000lm	16800lm	21000lm	25200lm	28000lm	33600lm
Efficacy(5000K Ra70)	140lm/W								
Correlated Color Temperature	5000K (2000K,2200K,2500K,2700K,3000K,3500K,4000K,4500K,5700K,6500K optional)/Red,Green,Blue,Amber								
Color Rendering Index	Ra70/Ra80/Ra90								
Beam Angle	Type I,Type III,Type V								

Dimentions and Mount

Product Dimension	See Table 1 for details	See Table 2 for details
Luminaire Net Weight(±0.3kg)	See Table 1 for details	See Table 2 for details
Export Carton Size	See Table 1 for details	See Table 2 for details
Gross Weight(±0.3kg)	See Table 1 for details	See Table 2 for details
Mounting Option	Ceiling mount/Pendant mount/Wall bracket/25° Stanchion mount/90° Stanchion mount/Trunnion mount	
Material	Aluminum alloy (less than 0.4% copper content) Polycarbonate optical lens/Tempered glass	
Finish	Powder coating	
Fixture Color	Grey	
EPA	NA	
IK Rating	IK08	
IP Rating	IP66	

Lifespan and Warranty

Operating Temperature	-40°C to + 65°C (-40°F to +149°F) (See the below table for details)
Life Time of LED @Ta=25°C	96395hrs-L80 153225hrs-L70
Warranty	5 years

Certifications and Compliances

Class I, Div. 2, GR. A, B, C, D
Class II, Div. 1, GR. E, F, G
Class II, Div. 2, GR. F, G
Class III
Simultaneous Presence
Suitable for Use Wet Locations
Suitable for Marine locations
Type 4X IP66
Certification No.:CSA23CA80090262X

Class I, Zone 2, Group IIC
Zone 20 and Zone 21
Zone 22

CAUTION: To Reduce The Risk Of Ignition Of Hazardous Atmospheres, Disconnect The Luminaire From The Supply Circuit Before Opening. Keep Tightly Closed When In Operation
ATTENTION: Pour réduire le risque d'inflammation d'atmosphères dangereuses, débranchez le luminaire du circuit d'alimentation avant de l'ouvrir. Garder hermétiquement fermé lors de l'utilisation

Item	Product model	Input Voltage	Rated Power	Tamb	T-Code	
					CL I DIV.2	CL II & CL III
1	HA05-030 series	100-277Vac	30W	-40°C to +66°C	T5	T5
	HA05-050 series	277-480Vac	50W	-40°C to +60°C	T6	T6
2	HA05-075 series	100-277Vac	75W	-40°C to +60°C	T5	T5
	HA05-100 series	277-480Vac	100W	-40°C to +60°C	T5	T5
3	HA05-120 series	100-277Vac	120W	-40°C to +65°C	T5	T5
	HA05-150 series	277-480Vac	150W	-40°C to +55°C	T5	T5
4	HA05-180 series	100-277Vac	180W	-40°C to +45°C	T5	T5
	HA05-200 series	277-480Vac	200W	-40°C to +45°C	T5	T5
5	HA05-240 series	100-277Vac	240W	-40°C to +45°C	T5	T5
	HA05-240 series	277-480Vac	240W	-40°C to +45°C	T5	T5

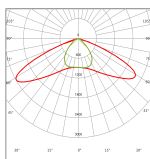
Model description:

HA 05-XXX-X-XX-XXX-XX-X-XX

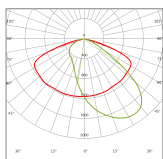
Options: WG=Wire Guard ; DM=Dimmable
Mounting Style: C=Ceiling mount; P=Pendant Mount; W=Wall Bracket;
S=25°Stanchion Mount; V=90°Stanchion Mount; T=Trunnion Mount
Diffusion Material: CG=Clear Glass
Beam Distribution: 014=T13801; 015=T13803; 016=T13805; 017=T32001;
018=T32003; 019=T32005
CCT(K): 20=2000, ... , 65=6500; Re=Red; G=Green; Bl=Blue; Am=Amber
Voltage: U=100-277Vac, 50/60Hz; V=277-480Vac, 50/60Hz
Lamp Wattage: 030=30W; 050=50W; 075=75W; 100=100W; 120=120W;
150=150W; 180=180W; 200=200W; 240=240W
Lamp Code: 05
Series Constant: HA-Hazardous

Photometry

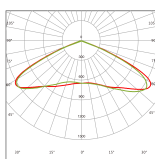
30W-100W



T13801(type I)(96x144°)

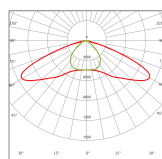


T13803(type III)(62x144°, Tilt45°)

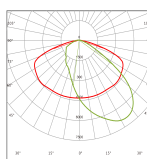


T13805(type V)(140°)

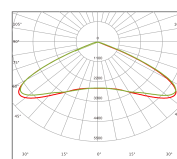
120W-240W



T32001(type I)(99x148°)



T32003(type III)(63x147°)

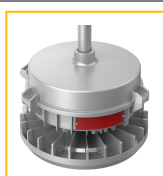


T32005(type V)(135°)

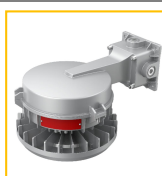
Mounting Options



Ceiling mount



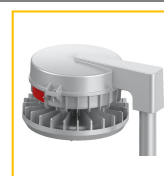
Pendant mount



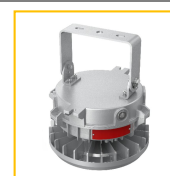
Wall bracket



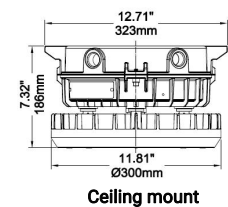
25° Stanchion mount



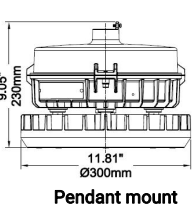
90° Stanchion mount



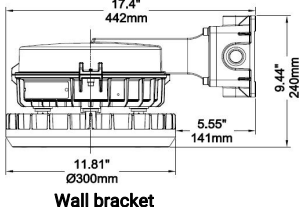
Trunnion mount



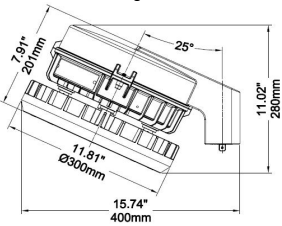
Ceiling mount



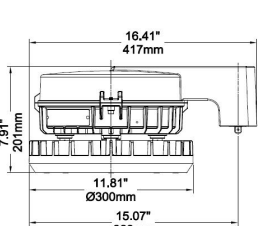
Pendant mount



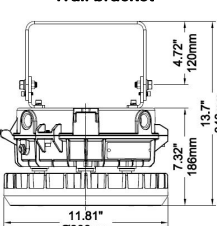
Wall bracket



25° Stanchion mount



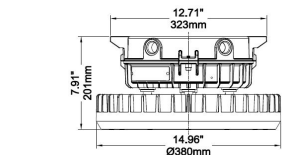
90° Stanchion mount



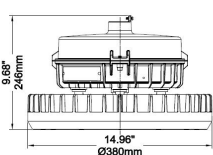
Trunnion mount

Table 1(30W-100W)

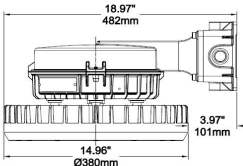
Mounting	Product dimension	Export carton size	Luminaire net weight(±0.3kg)	Gross weight (±0.3kg)
Ceiling mount	323x186mm (12.71"x7.32")	360x360x225mm (14.17"x14.17"x8.86")	6.5±0.3kg (14.33±0.66Lbs)	8.0±0.3kg (17.64±0.66Lbs)
Pendant mount	Φ300x230mm (11.81"x9.05")	360x360x260mm (14.17"x14.17"x10.24")	6.1±0.3kg (13.45±0.66Lbs)	7.9±0.3kg (17.42±0.66Lbs)
Trunnion mount	Φ300x348mm (11.81"x13.7")	360x360x300mm (14.17"x14.17"x11.81")	8.1±0.3kg (17.86±0.66Lbs)	9.7±0.3kg (21.38±0.66Lbs)
25° Stanchion mount	400xΦ300x280mm (15.74"x11.81"x11.02")	530x360x240mm (20.86"x14.17"x9.45")	7.6±0.3kg (16.76±0.66Lbs)	9.9±0.3kg (21.83±0.66Lbs)
90° Stanchion mount	417xΦ300x201mm (16.41"x11.81"x7.91")		7.8±0.3kg (17.20±0.66Lbs)	10.1±0.3kg (22.27±0.66Lbs)
Wall bracket	Φ300x442mm (11.81"x17.4")	530x360x275mm (20.86"x14.17"x10.83")	8.5±0.3kg (18.74±0.66Lbs)	11.0±0.3kg (24.25±0.66Lbs)



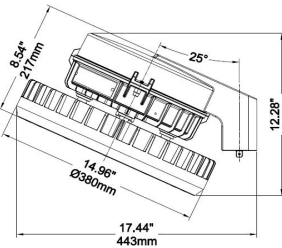
Ceiling mount



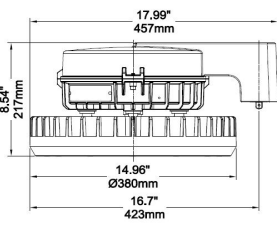
Pendant mount



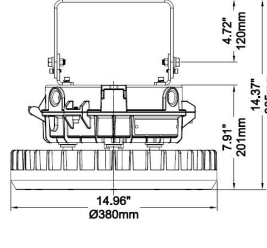
Wall bracket



25° Stanchion mount



90° Stanchion mount

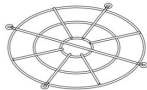


Trunnion

Table 2(120W-240W)

Mounting	Product dimension	Export carton size	Luminaire net weight(±0.3kg)	Gross weight (±0.3kg)
Ceiling mount	Φ380x201mm (14.96"x7.91")	470x470x240mm (18.50"x18.50"x9.45")	9.7±0.3kg (21.38±0.66Lbs)	12.2±0.3kg (26.90±0.66Lbs)
Pendant mount	Φ380x246mm (14.96"x9.68")	470x470x275mm (18.50"x18.50"x10.83")	9.4±0.3kg (20.72±0.66Lbs)	12.0±0.3kg (26.46±0.66Lbs)
Trunnion mount	Φ380x365mm (14.96"x14.37")	470x470x320mm (18.50"x18.50"x12.60")	11.3±0.3kg (24.91±0.66Lbs)	14.1±0.3kg (31.09±0.66Lbs)
25° Stanchion mount	443xΦ380x312mm (17.44"x14.96"x12.28")	570x460x255mm (22.44"x18.11"x10.04")	10.8±0.3kg (23.80±0.66Lbs)	13.8±0.3kg (30.42±0.66Lbs)
90° Stanchion mount	457xΦ380x217mm (17.99"x14.96"x8.54")		11.1±0.3kg (24.47±0.66Lbs)	14.0±0.3kg (30.86±0.66Lbs)
Wall bracket	482xΦ380x256mm (18.97"x14.96"x10.08")	570x460x290mm (22.44"x18.11"x11.42")	11.7±0.3kg (25.79±0.66Lbs)	15.3±0.3kg (33.73±0.66Lbs)

Accessories



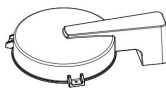
Wire Guard
Dimension: 235x235x6mm
Surface Treatment: Nickel Plating
Color: Nickel Color
Material: SUS304

Code: BC-HA05-01(30W-100W)



Wire Guard
Dimension: 319x319x6mm
Surface Treatment: Nickel Plating
Color: Nickel Color
Material: SUS304

Code: BC-HA05-02(120W-240W)



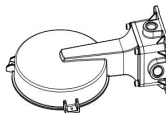
90° Stanchion mount
Dimension: 407x311x126mm
Surface Treatment: Powder coating
Color: Grey (RAL9007)
Material: Aluminum alloy

Code: BC-HA05-03



25° Stanchion mount
Dimension: 388x311x117mm
Surface Treatment: Powder coating
Color: Grey (RAL9007)
Material: Aluminum alloy

Code: BC-HA05-04



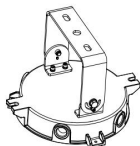
Wall bracket
Dimension: 432x308x155mm
Surface Treatment: Powder coating
Color: Grey (RAL9007)
Material: Aluminum alloy

Code: BC-HA05-05



Ceiling mount
Dimension: 324x308x58mm
Surface Treatment: Powder coating
Color: Grey (RAL9007)
Material: Aluminum alloy

Code: BC-HA05-06



Trunnion mount
Dimension: 324x308x216mm
Surface Treatment: Powder coating
Color: Grey (RAL9007)
Material: Aluminum alloy

Code: BC-HA05-07



Pendant mount
Dimension: 308x280x103mm
Surface Treatment: Powder coating
Color: Grey (RAL9007)
Material: Aluminum alloy

Code: BC-HA05-08