

APPLICATIONS

- Large construction projects
- Mining operations
- Maintenance & Repair
- Accident Handling
- Flood Prevention & Rescue
- Disaster Relief
- Parking lots, Docks
- Large events(music festivals,sporting event etc.



LARGE CONSTRUCTION PROJECTS



MINING OPERATIONS



LARGE EVENTS



MAINTENANCE & REPAIR



FLOOD PREVENTION & RESCUE



ACCIDENT HANDLING



DISASTER RELIEF

PRODUCT OVERVIEW

MULTI-PURPOSE

MOBILE
SOLAR
LIGHTING
TOWER



Solar energy



Extendable and
Retractable Mast



360° Rotation



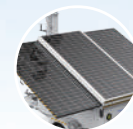
Intelligent control



Smart camera for optional



Extendable and
Retractable Mast



Foldable solar panel



Control panel



Real-time turn signal

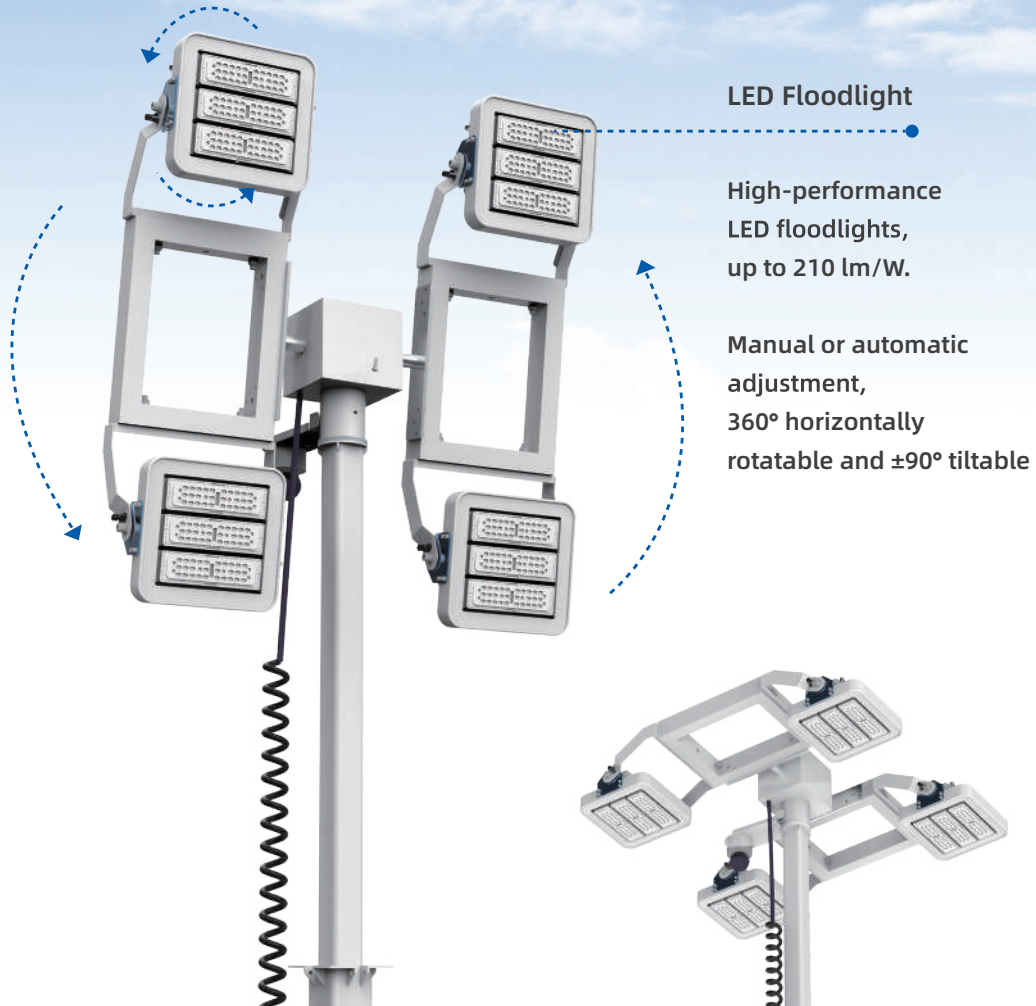


Extensible interface



Four support legs





LED Floodlight

High-performance
LED floodlights,
up to 210 lm/W.

Manual or automatic
adjustment,
360° horizontally
rotatable and $\pm 90^\circ$ tiltable



TOWING THE TRAILER TO THE JOB SITE



REAL-TIME MONITORING

FEATURES

Mobile and powerful:

One full charge can run the LED flood lights for up to 24 hours, and the illuminated area can reach 300m²

Solar powered:

Brand solar panel solutions are used, mono-crystal silicon 1290W module power, 22.4% efficiency.

Easy control:

Remote control, push button control, as well as LCD control panel.

LED floodlights:

Manual or automatic adjustment of LED floodlights are both available, 360° rotation offers greater lighting coverage.

Extendable and Retractable Mast:

Electric mast, heights of 6M/9M/12M are available upon request, 117km/h wind resistance

Battery:

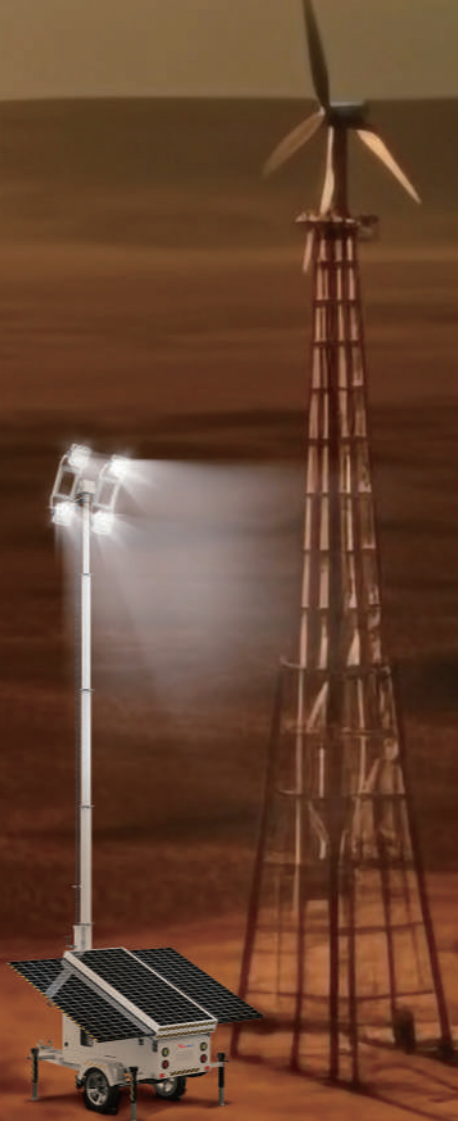
100-220Vac/50-60Hz output, which can provide power for some construction equipment, mobile phones, and small electrical appliances.

Reliable and durable:

Deep cycle gel battery is used (LiFePO₄ battery for optional)

Smart camera for optional:

Smart 4G cellular security camera enables real-time monitoring, anti-theft, detection and intercom.



FEATURES

SLT660-7M	
Control Options	Control of the operation panel
PV Controller	MPPT 60A, 95% efficiency
System Voltage	DC24V
Working Temperature	-20C-50°C
Charging Time	7.7 hours
IP rating	IP65
Lighting System	
Lights (LED)	4 x 100W, 210lm/W, beam angle:90° in default 5700±300K,IP66
Illuminated area @ 7m	2800-3200m ² at 20lux
Solar Panel	
Solar Panel Wattage	3*430W 1290W Mono crystalline Silicon, 22.4% efficiency
Draw-out Type	Manual
Efficiency	1 hour of sun /5 hours of light
Peak Solar Charge Speed	1.29kW/h
Mains power charger	
Input voltage	AC110-220V 50-60Hz
Inverter Output	DC29.2V 20A
Battery	
Type	Lithium iron phosphate battery
Battery Pack	2*200Ah DC25.6V 10240Wh
Cycle Life	6000
Brightness(4x100W 100%)	25 hours
Inverter	
Input voltage	DC24V
Inverter Output	AC110V/240V Optional
Output Type	Sine Wave
Output Connections	1*16A+ AC sockets+1* 5A,USB2.0
Inverter Power	3kW
Lifting mast	
Type	Electric/manual/hydraulic optional, manual in default
Mast Height	2.5 -7M lifting height, 5 Sections, Load-bearing capacity: 90kg
Wind Resistance Rating	117km/h
Rotation / Tilt	360° Rotatable and 90 Tilttable, manual adjustment in default
Material	Hot-Dip Galvanized Steel



SLT660-7M



The mast can be raised or lowered steplessly, and rotated horizontally and vertically by all-electric control.

The mast can be extended to 6 m high. 117km/h wind resistance.

Trailer	
Axle	Single
Tire and Rim	2*14 inch Pneumatic Tires
Stabilizer	4 Support legs, Manual
Tower Hitch	Ball Type, with towing eye ≤70mm, suitable for 50mmtrailer ball
Braking Mode	Parking hand break + Overrun device
Drawbar	USA/ EU / AU standard
Trailer Speed	80 km/h
Shipment	
Transport Dimension(L*W*H)	2050*1300*2365mm
Deployed Dimension(L*W*H)	3070*3627*7000mm
Total Weight	1100kg
Loading Plan	40HQ:9 PCS

